

THIS MAP WAS PREPARED FOR
ASSESSMENT PURPOSE ONLY

SECTION 32 T.1N. R.13E. W.M.
WASCO COUNTY
1" = 400'

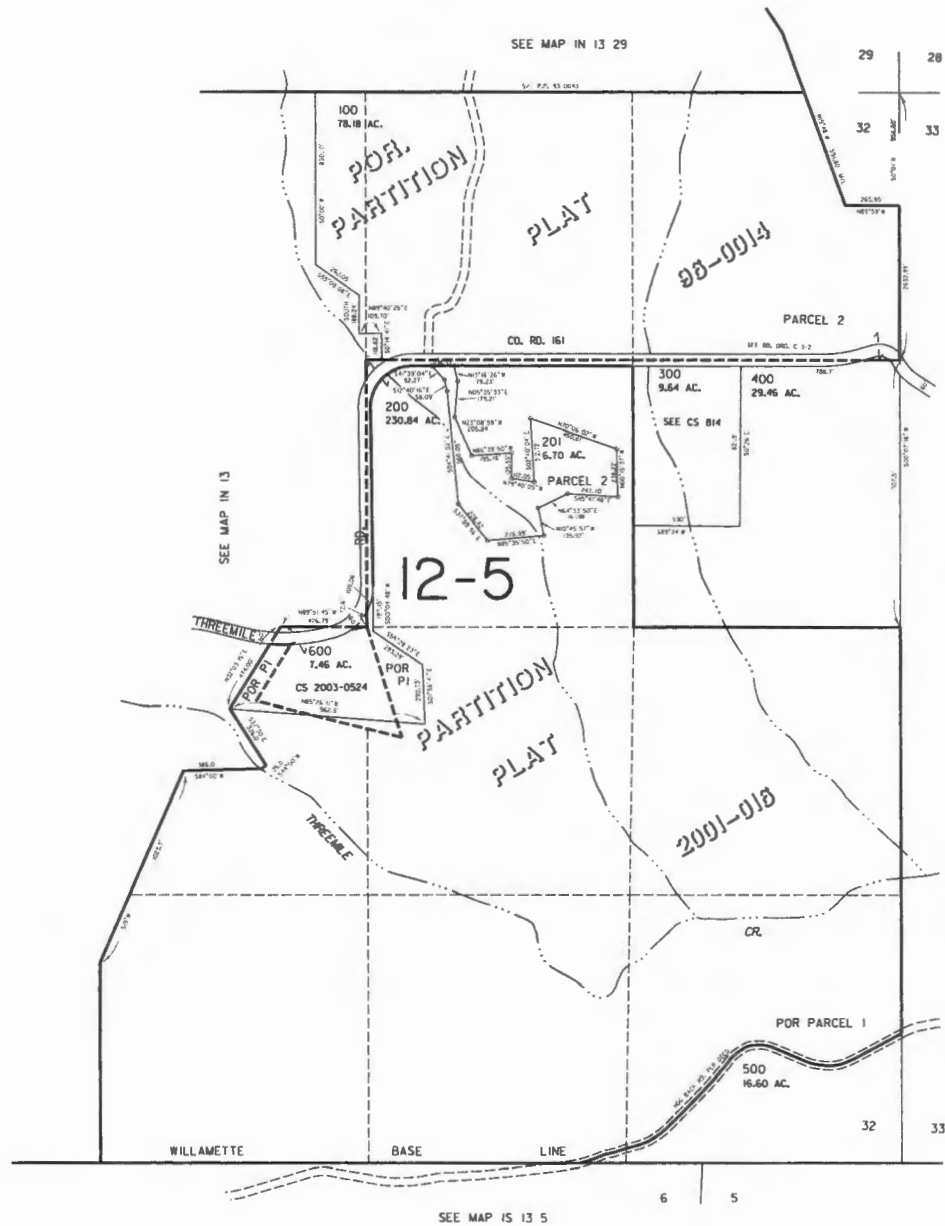
IN 13 32



30 | 29

31 | 32

RECEIVED BY OWRD
OCT 31 2016
SALEM, OR



31 | 32

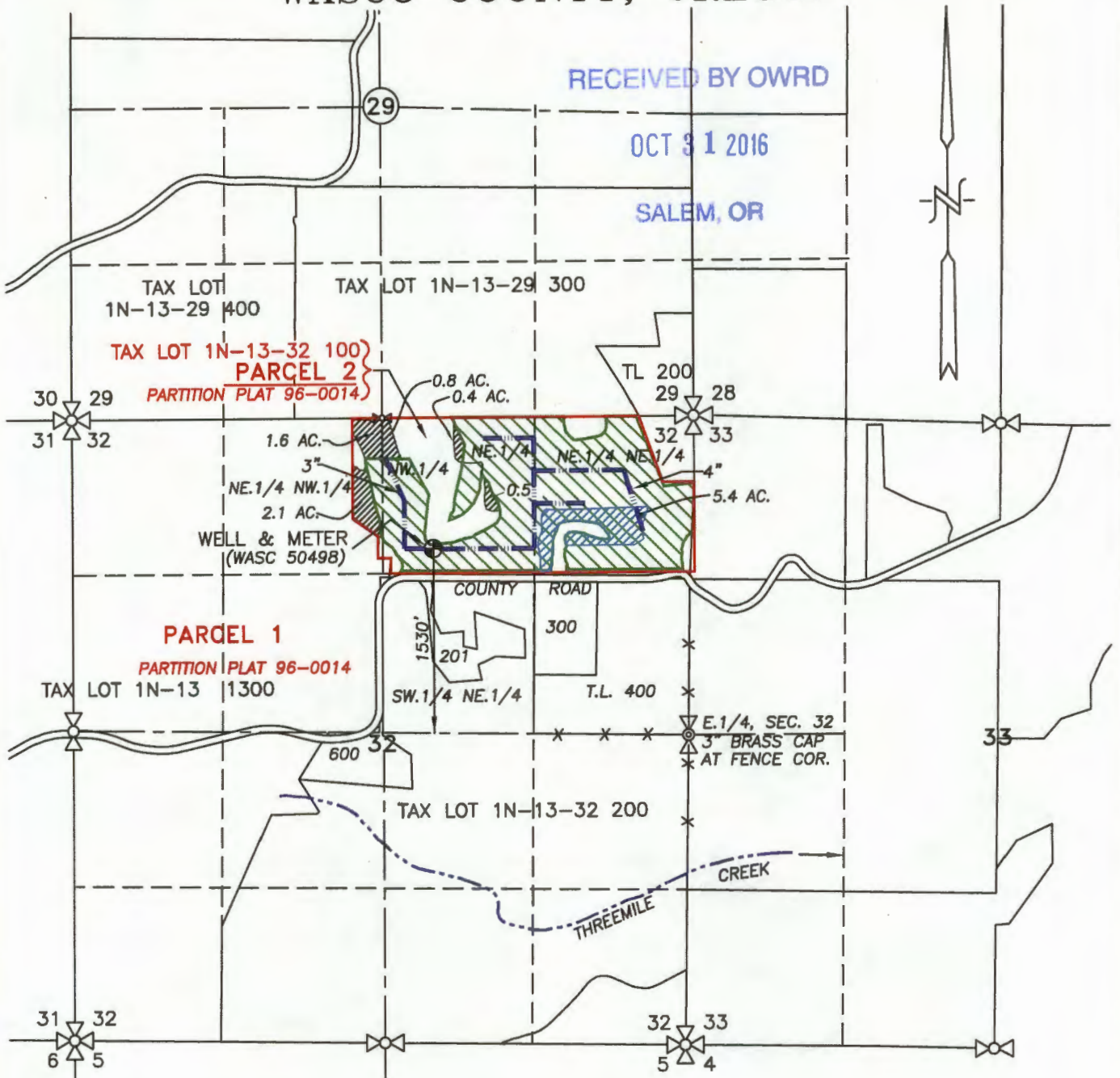
1 | 6

T 12519






Revised
5/20/2003, CS

IN 13 32

SECTION 32, TWP.1 N., RANGE 13 E. W.M.
WASCO COUNTY, OREGON

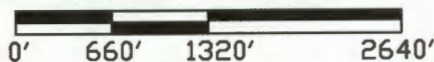


LEGEND :

- WELL (WASC 50498): 1530' N. & 2212' W. OF E.1/4, SEC. 32
-  EXISTING WATER RIGHT AREA (52.8 AC.) NO CHANGE
-  TRANSFER AREA TO = 5.4 ACRES
-  TRANSFER AREA FROM = 5.4 ACRES
-  IRRIGATION MAINLINE
-  STREAM WITH DIRECTIONAL FLOW

WATER RIGHT TRANSFER MAP

SCALE: 1" = 1320'

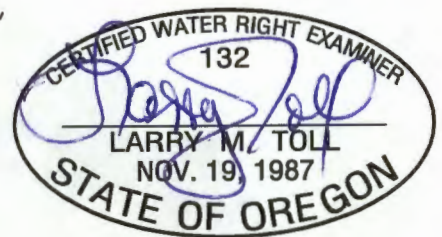


TRANSFER No. _____

IN THE NAME OF:
ERIK JOHNSEN

DATE: APRIL 9, 2015

BY: **TENNESON ENGINEERING CORP.**
3775 CRATES WAY
THE DALLES, OREGON. 97058
PH. 541-296-9177
FAX 541-296-6657



EXPIRES: 06/30/2016

NOTE:

"THIS MAP IS NOT INTENDED TO PROVIDE DIMENSIONS OR LOCATIONS OF PROPERTY OWNERSHIP LINES."

W.O. #9272WR

T 12518