

RECEIVED

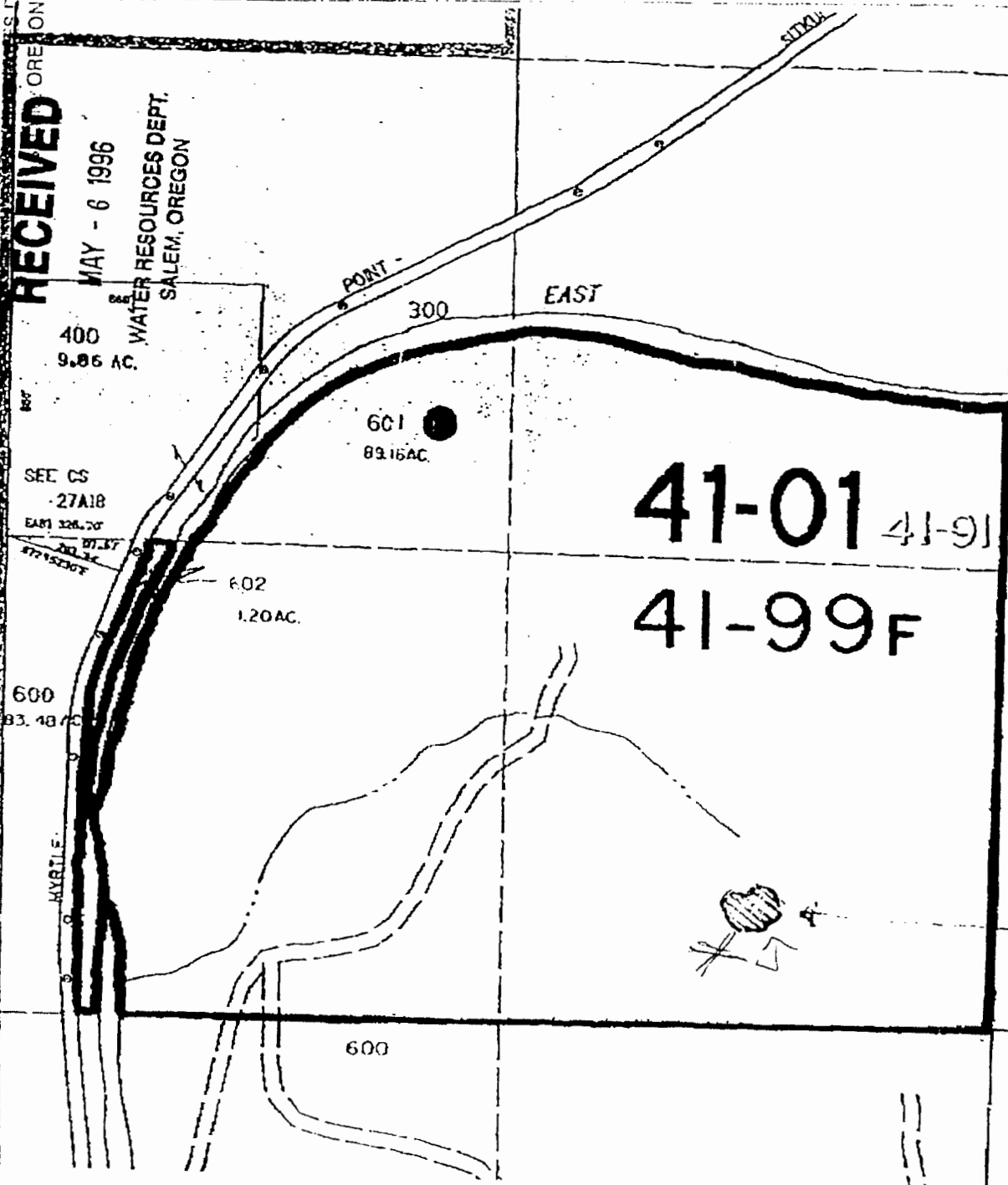
JUN 28 1996

SEE MAP 28 II

RECEIVED OREGON

MAY - 6 1996

WATER RESOURCES DEPT.
SALEM, OREGON



RECEIVED

MAY 23 2011

WATER RESOURCES DEPT.
SALEM, OREGON

TOTAL P. 22

TAB 85 R11W Sec 15
 NE 1/4, SW 1/4
 TAX LOT 601
 APPROX 20' S. & 650' W. FROM C 1/4
 → Pond Location.

Application No. R 81250
 Permit No. R11996



KEY TITLE COMPANY
 THIS COPY OF ASSESSOR'S MAP
 PROVIDED SOLELY TO ASSIST IN
 LOCATING SUBJECT PROPERTY.
 LIABILITY IS ASSUMED BY KEY
 DISCREPANCIES IN THIS MAP