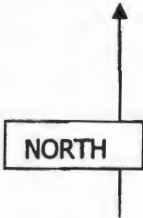


# APPLICATION MAP

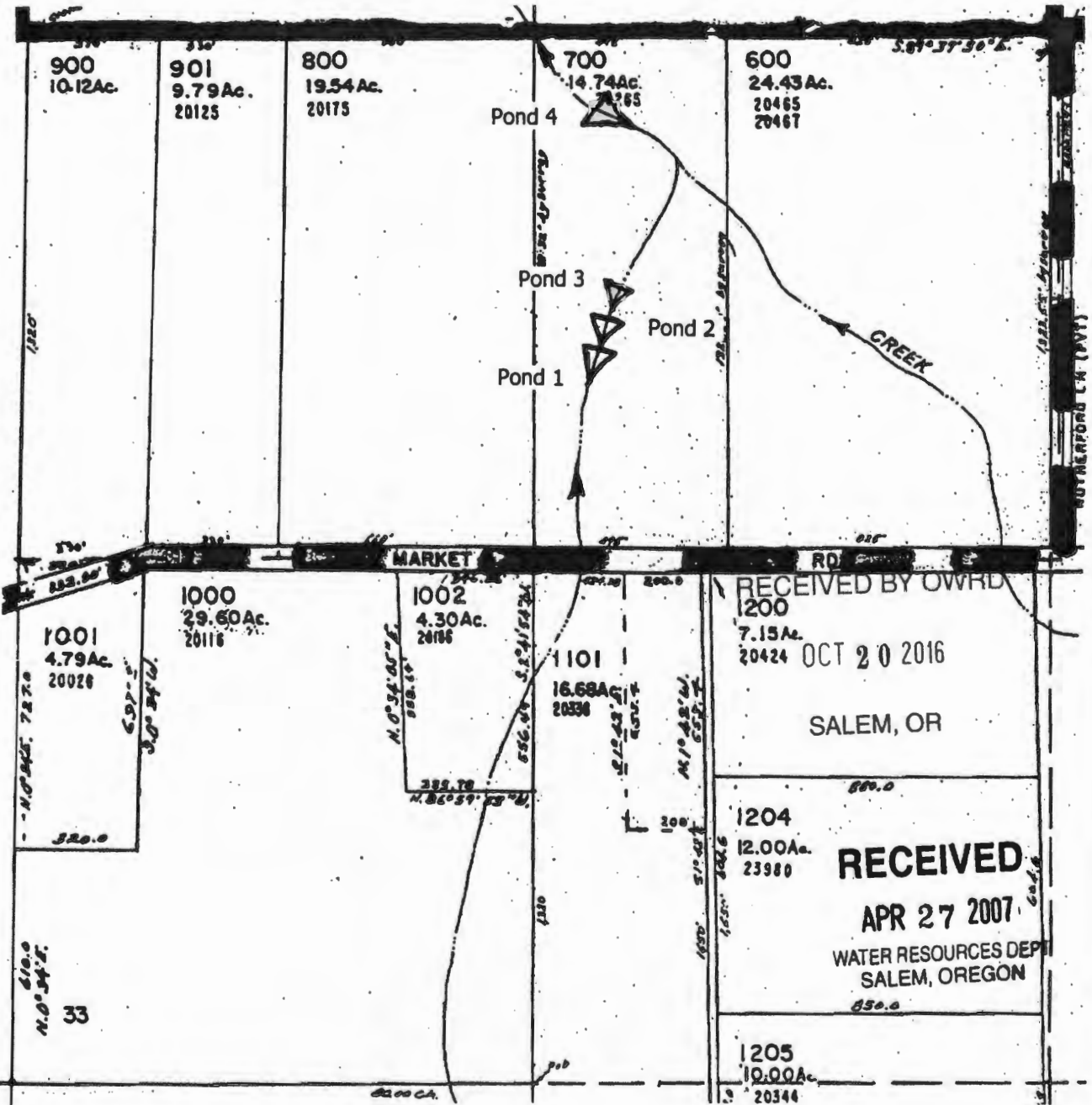
## Richard & Susan Dubnow

### T 3 S R 3 W, Section 33 W.M.

Scale 1" = 400'



Pond 1: 1850'N & 1460'E  
 Pond 2: 1930'N & 1475'E  
 Pond 3: 2010'N & 1510'E  
 Pond 4: 2460'N & 1430'E  
 All from the SW corner section 33



RECEIVED BY OWRD  
 1200  
 7.15Ac.  
 20424 OCT 20 2016

SALEM, OR

**RECEIVED**  
 APR 27 2007  
 WATER RESOURCES DEPT  
 SALEM, OREGON

This map is for water right purposes only.

Don Knauer Consulting

add no R-866837