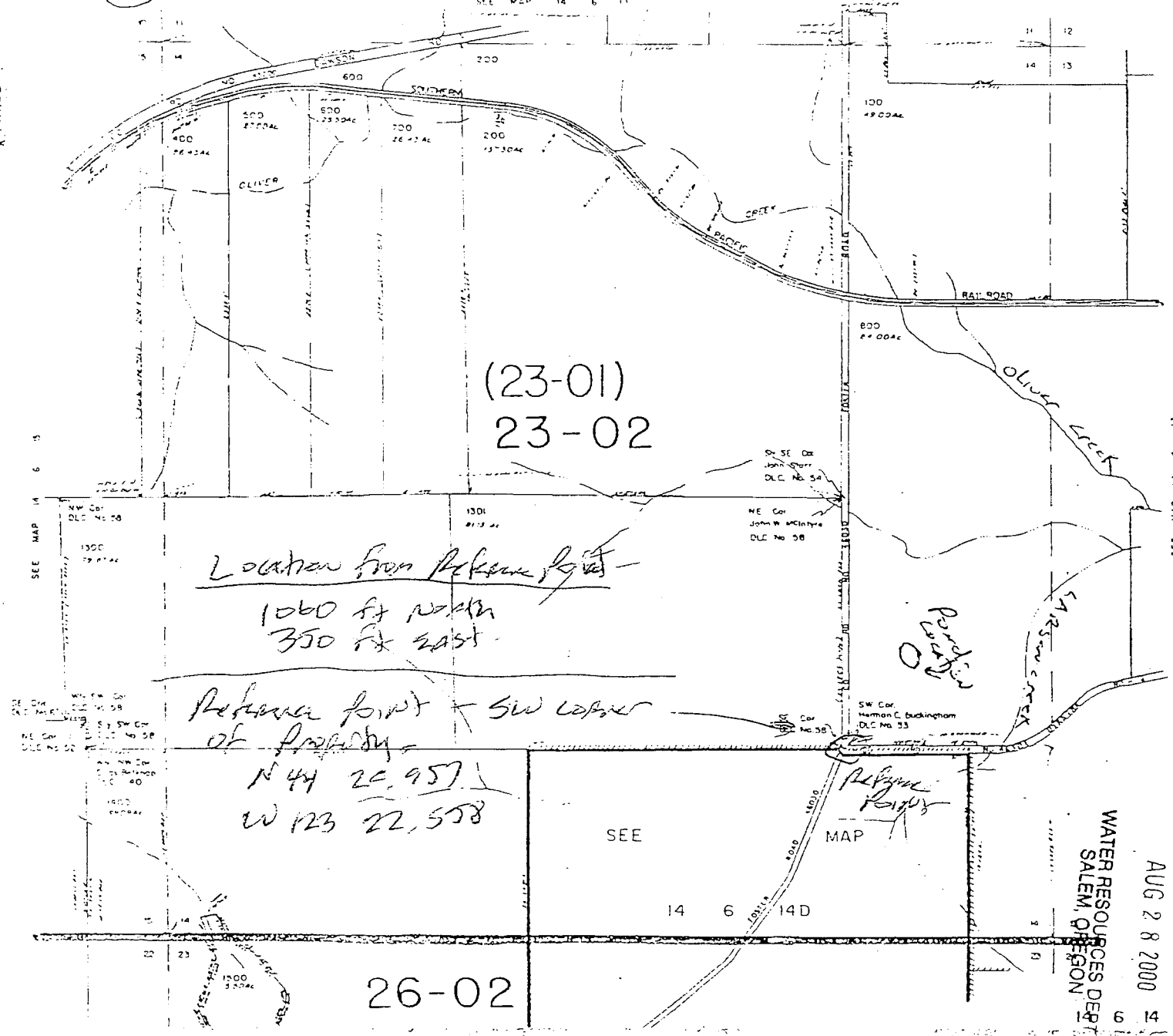
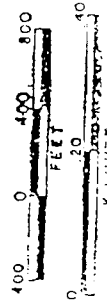


14 6 14

S 14 T 14 S R 14 E  
Benton County, OR



SCALE 1" = 600 FT



Application No R 84517  
Permit No.

SCALE APPROX  
1" = 600 FT

RECEIVED BY OWR  
AUG 27 2015  
SALEM, OR

SI 9 91 PAR 315

RECEIVED  
AUG 28 2000

WATER RESOURCES DEPT  
SALEM, OREGON