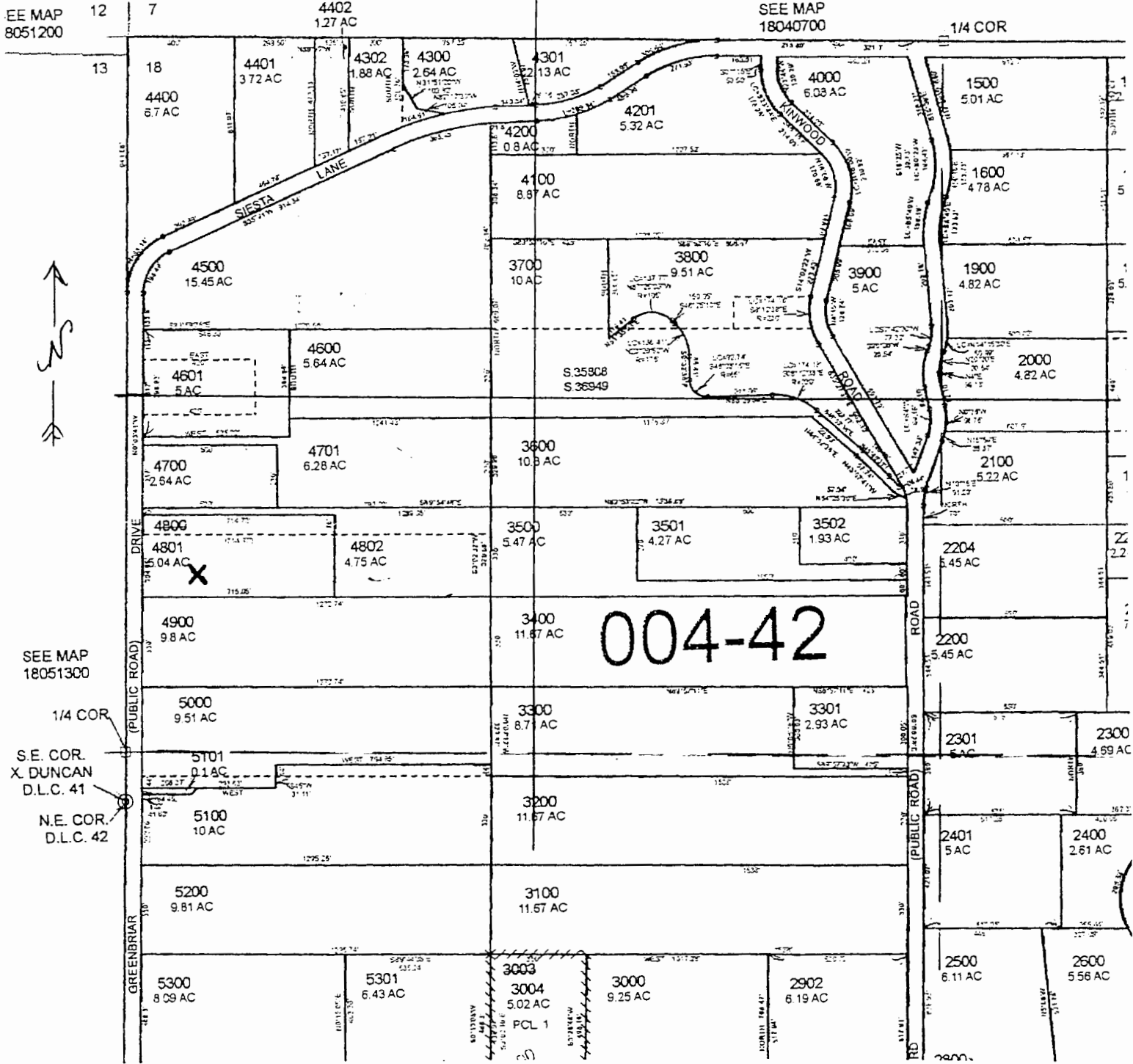


Mundt Res. App

FOR ASSESSMENT AND TAXATION ONLY

SECTION 18 T.18S. R.4W. W.M.
Lane County
1" = 400' 500'

Pond in SW 1/4 of NW 1/4
TL 4801



Pond will be 1,900 ft. South and

RECEIVED

200 ft East of NW cor. SEC 18

RECEIVED BY OWRD

APR 23 2015

MAY 05 2015

R-88078 R-15133

AUG 23 2016

SALEM, OR

OWRD

SALEM, OR