

RECEIVED

NOV 22 2004

WATER RESOURCES DEPT  
SALEM, OREGON

SEE MAP 3 2E 18A

APPL #

LARRY POTTER

RESERVOIR LOCATION:

NE 1/4, NE 1/4 SEC. 1, T 3 S., R. 2 E

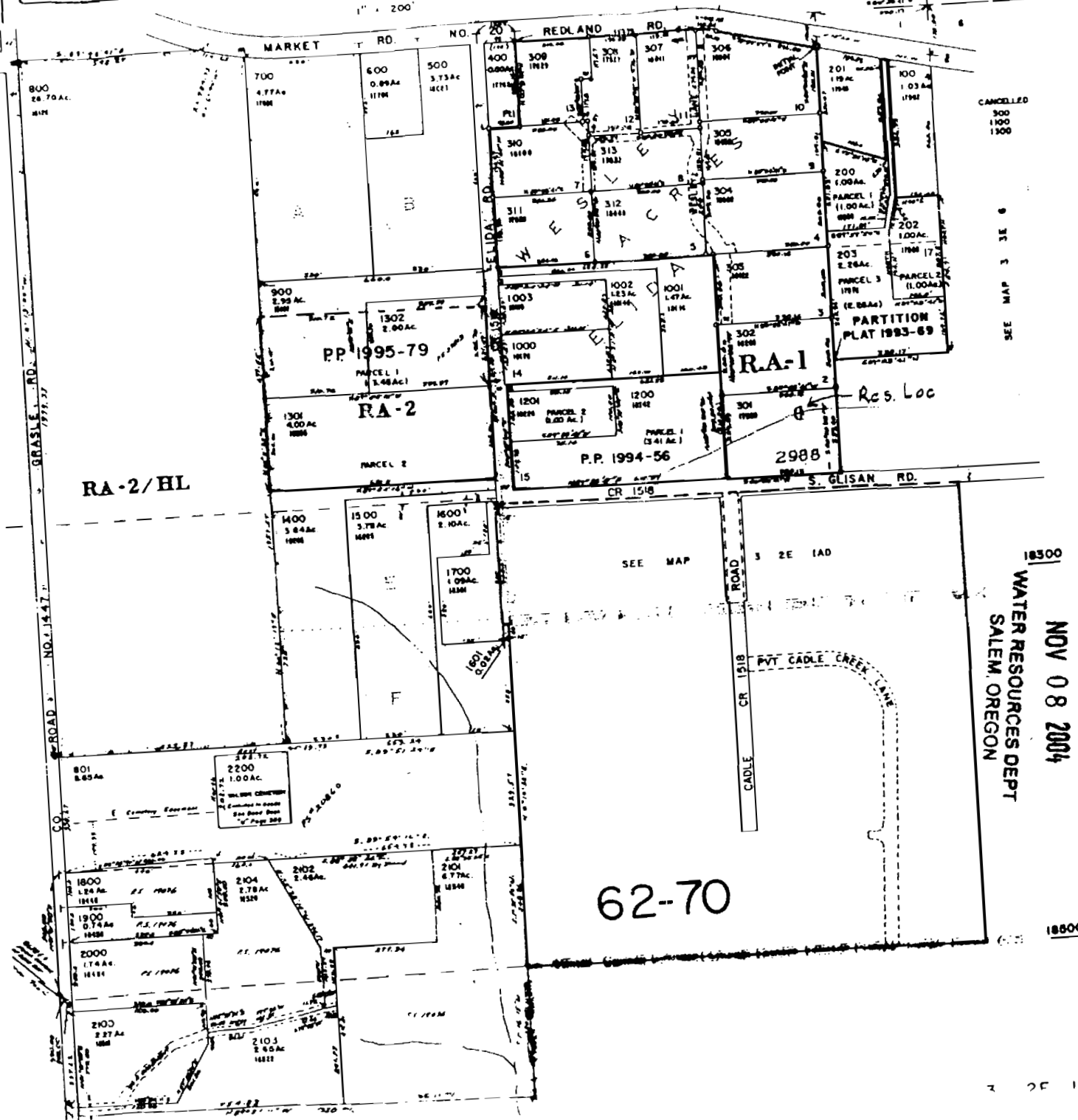
TL 301

DAM LOCATION:

920' S AND 280' W FROM  
NE CORNER, SECTION 1

SCALE: 1" = 400'

N



RECEIVED

NOV 08 2004

WATER RESOURCES DEPT  
SALEM, OREGON

3 2E 18A