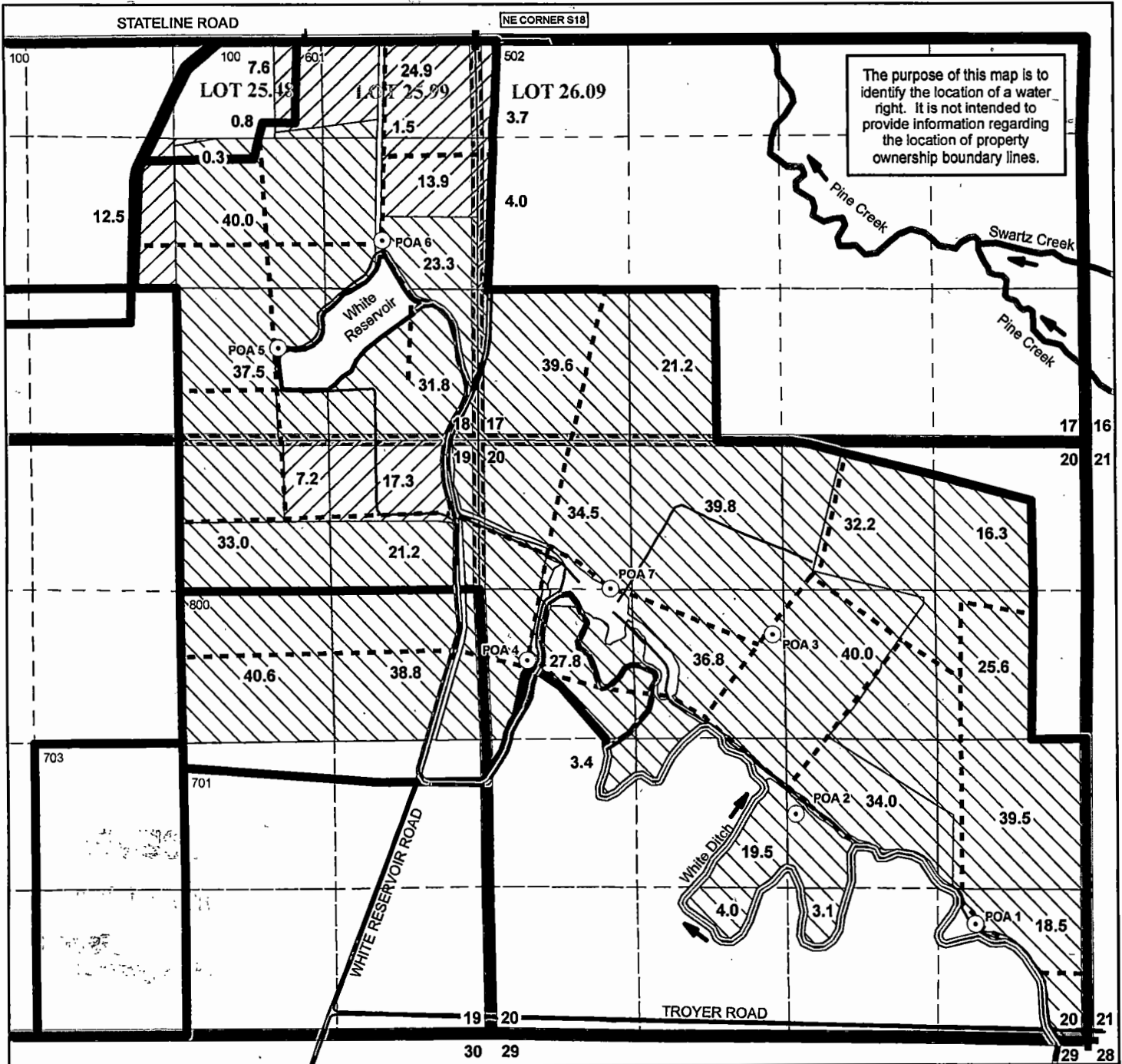


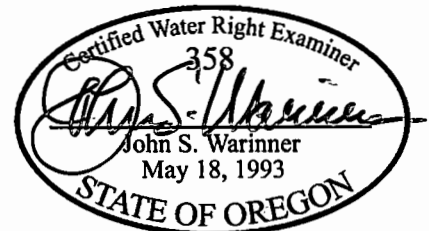
SECTIONS 17, 18, 19, 20
T6N, R34E, WM
Umatilla County

0 660 1320
Feet



⊙ **Points of Appropriation** (All flow measurement devices located at wells)

- POA 1: Well in SE/4 SE/4, S20, 1030 feet N and 1015 feet W from SE Corner S20. Well Log N/A.
- POA 2: Well in NW/4 SE/4, S20, 1975 feet N and 2635 feet W from SE Corner S20. Well Log UMAT 4104.
- POA 3: Well in SE/4 NW/4, S20, 3580 feet N and 2870 feet W from SE Corner S20. Well Log UMAT 4106.
- POA 4: Well in SW/4 NW/4, S20, 3310 feet N and 5045 feet W from SE Corner S20. Well Log UMAT 4105.
- POA 5: Well in SW/4 SE/4, S18, 2785 feet S and 1720 feet W from NE Corner S18. Well Log N/A.
- POA 6: Well in NE/4 SE/4, S18, 1800 feet S and 800 feet W from NE Corner S18. Well Log UMAT 55438.
- POA 7: Well in NW/4 NW/4, S20, 3960 feet N and 4320 feet W from SE Corner S20. Well Log UMAT 55437.



- Place of Use - Primary (91.4 acres)**
- Place of Use - Supplemental (704.3 acres)**

Water beneficially used for primary and supplemental irrigation of 795.7 acres.

----- **Conveyance**

Buried mainline connects all seven wells. Water applied with portable sprinklers on handlines and wheel-line.

CLAIM OF BENEFICIAL USE
App G-15346 and Permit G-15002

in the name of
WHITE BROTHERS CO., INC.

Revised 07 OCT 2010