

THIS MAP WAS PREPARED FOR ASSESSMENT PURPOSE ONLY.

SEC.15 T.25S. R.6W. W.M. DOUGLAS COUNTY

REVISED UN 4-30-07

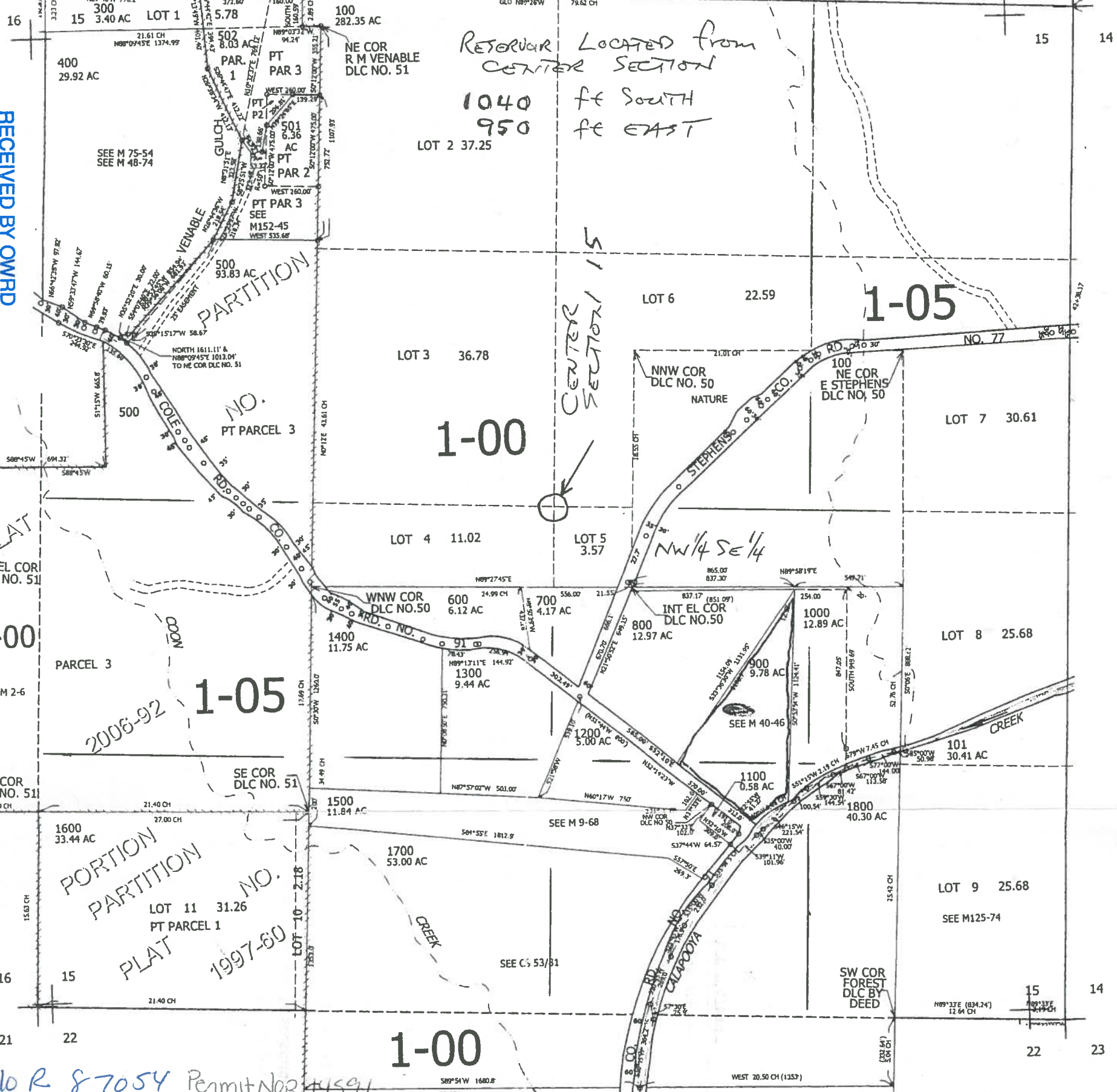
1" = 400'

WORK COPY

SEE MAP 25 6 10

9 10

10 11



RECEIVED BY OWRD

JAN 11 2017

SALEM, OR

SEE MAP 25 6 16

2017

App No R 87054 Permit NOR #4591