

Polk County

0
of 2 (UNSURVEYED)
97 AC

100
160.00 AC.

PP 2003-0010

JSW
Oct. 25, 2007

Cancelled No.

- 301
- 312
- 314
- 802 B1
- 801
- 803
- 803 A1
- 805
- 816
- 817
- 800 B1
- 1200



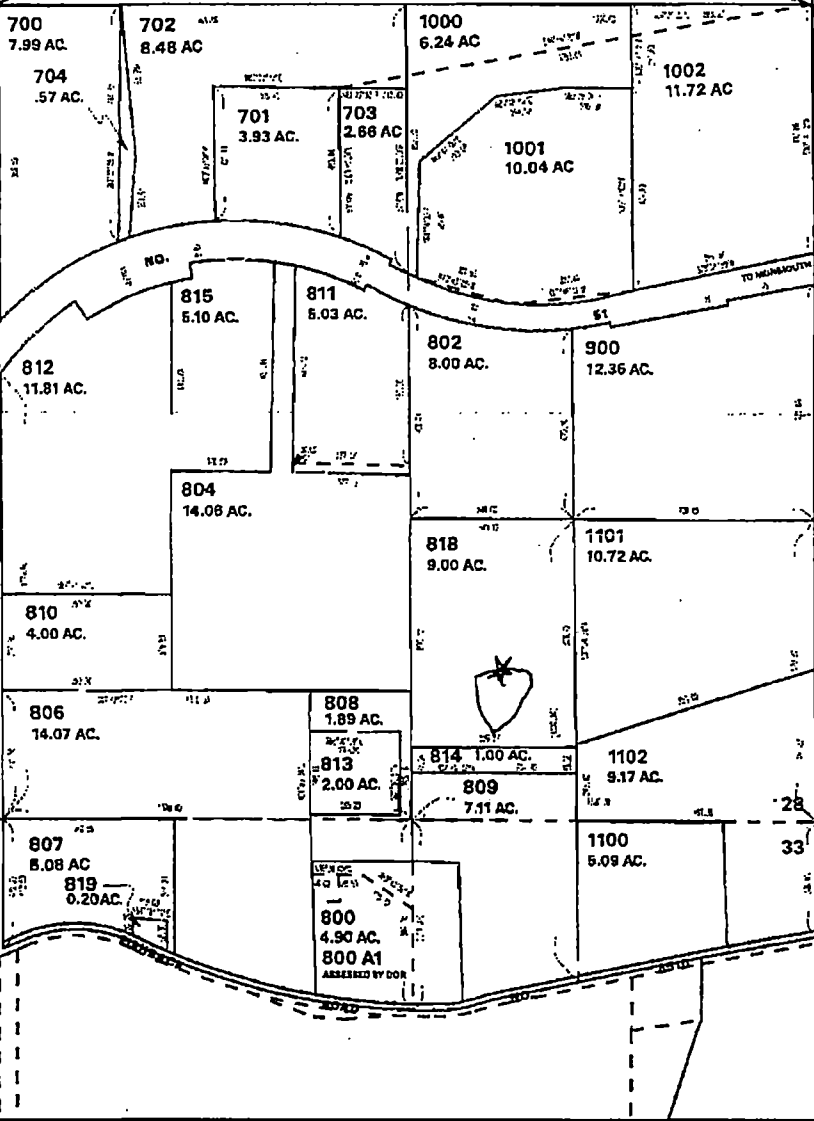
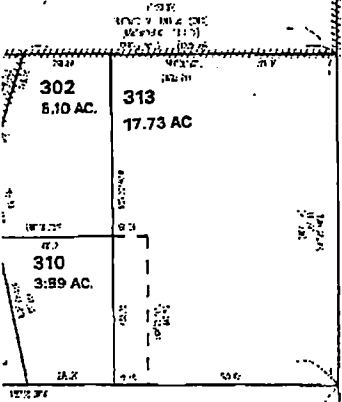
1" = 600'

Township 8 South, Range 5 West,
Section 28, W.M.

* Reservoir located in the SESE,
section 28, T8S, R5W, W.M. (TL 818)

* Dam Location: 490 feet North
and 1020 feet West from the
SE corner, section 28, T8S, R5W, W.M.

13-8



See Map 8.5.27

RECEIVED

OCT 26 2007

WATER RESOURCES DEPT
SALEM, OREGON

RECEIVED BY OWRD

DEC 27 2016

SALEM, OR

See Map 8.5.34

See Map 8.5.33

8.5.28

App no R 87031