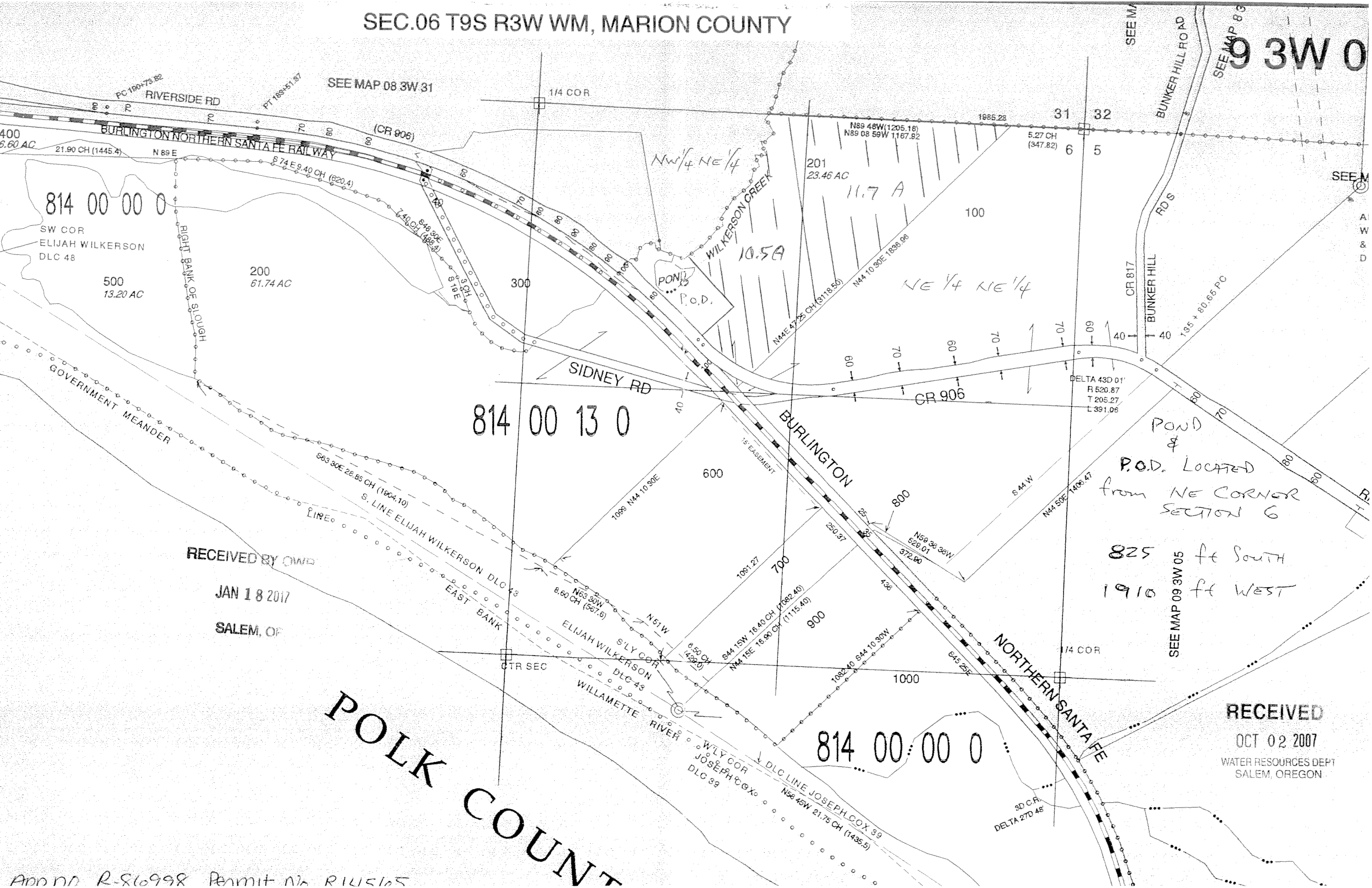


SEC.06 T9S R3W WM, MARION COUNTY

9 3W 0



814 00 00 0

814 00 13 0

814 00 00 0

RECEIVED BY OWD
JAN 18 2017
SALEM, OR

POUND &
P.O.D. LOCATED
from NE CORNER
SECTION 6
825 ft SOUTH
1910 ft WEST
SEE MAP 09 3W 05

RECEIVED
OCT 02 2007
WATER RESOURCES DEPT
SALEM, OREGON

POLK COUNTY