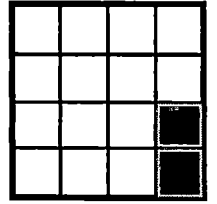


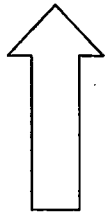
Well & Meter - 500' West, 1260' South of East Quarter Corner.

East Quarter Corner



T22S, R10E
Section 30
Deschutes County

North



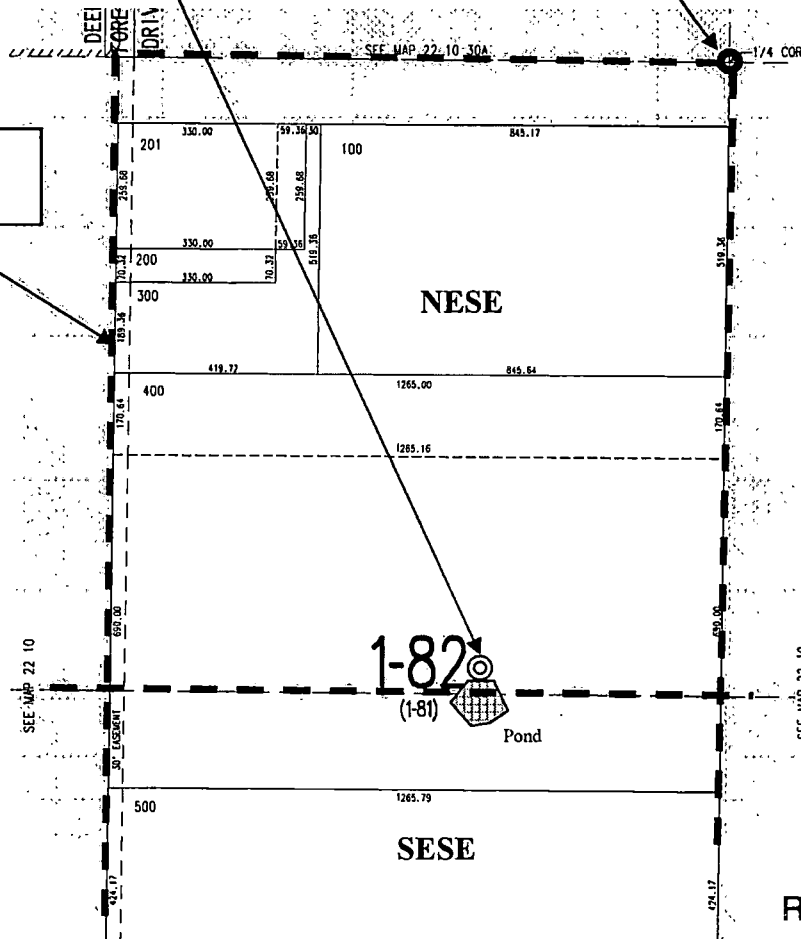
1 inch equals 400 feet

RECEIVED BY OWRD

JUL 29 2013




SALEM, OR

Quarter-Quarter Section Boundaries.



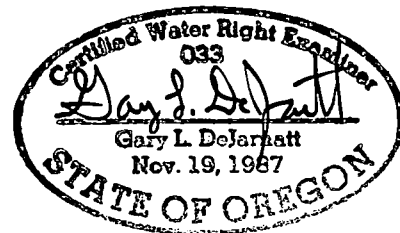
This map is not intended to provide legal dimensions or locations of property ownership lines.

Claim of Beneficial Use Map for John M. Lipkowitz Ap. G-17553, Permit G-17060

-  Place of Use - Storage
-  Approximate Well Location
-  Approximate Corner Location

July 24, 2013

John A. Short
Water Right Services, LLC
 P.O. Box 1830
 Bend, OR 97709
 541-389-2837
johnshort@usa.com
www.oregonwater.us



JOB # 13057

RENEWAL DATE: 12-31-2013