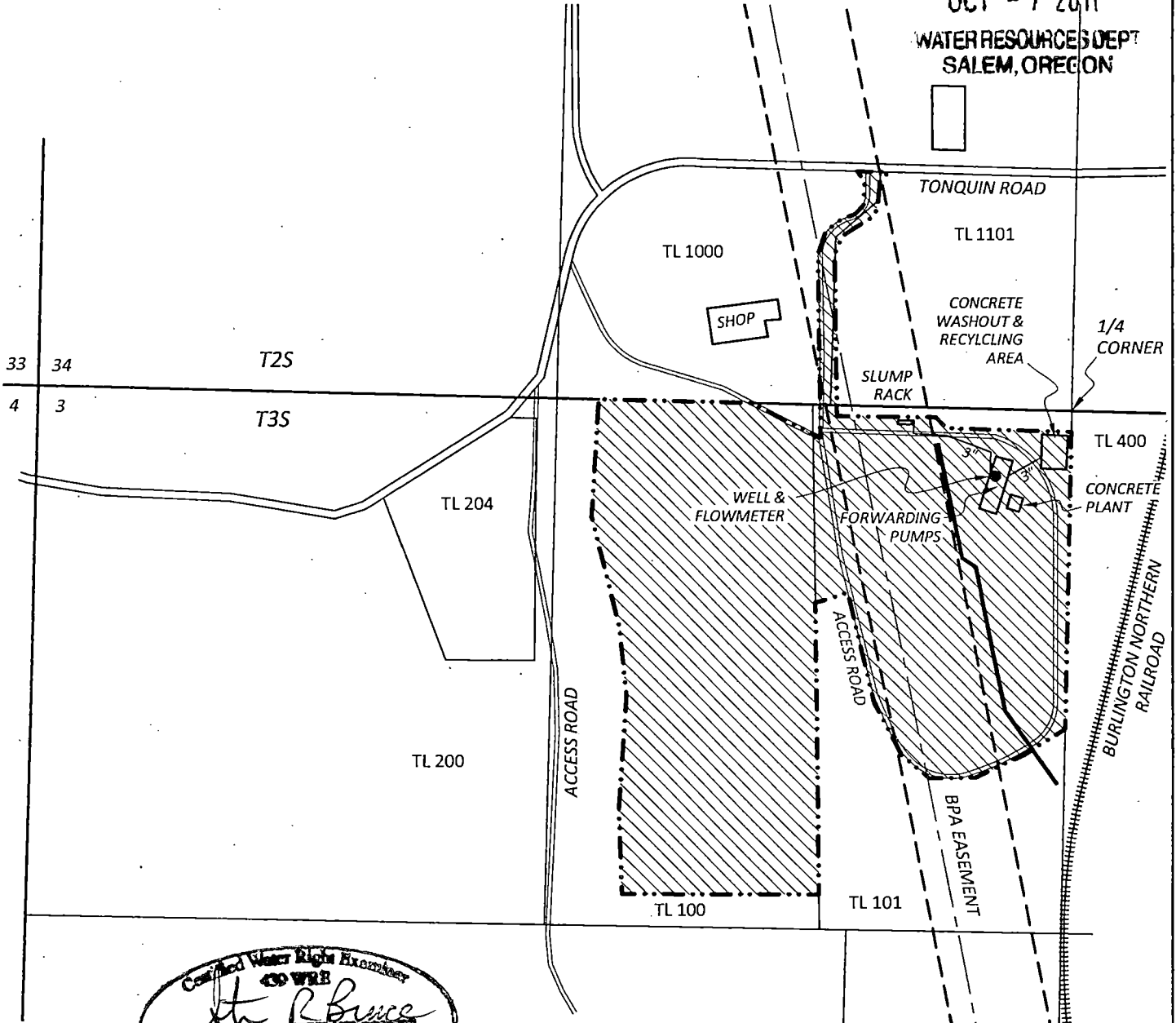


T 2 S & T 3 S, R 1 W, W.M.
 WASHINGTON COUNTY
 APPLICATION G-16562, PERMIT G-16087
 CLAIM OF BENEFICIAL USE MAP

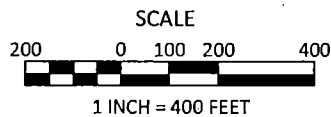
RECEIVED

OCT - 7 2011

WATER RESOURCES DEPT
 SALEM, OREGON



Steven R. Bruce
 Steven R. Bruce
 June 13, 1977
 Expires 12/31/2011
 STATE OF OREGON



WELL LOCATED 170 FT S AND 200 FT W
 FROM N 1/4 CORNER OF SECTION 3

SITE INSPECTION CONDUCTED
 SEPTEMBER 15, 2011

PLACE OF USE

THIS MAP IS NOT INTENDED TO
 PROVIDE LEGAL DIMENSIONS OR
 LOCATIONS OF PROPERTY
 OWNERSHIP LINES

SKOOKUM
 WATER ASSOCIATES INC

FIGURE 1

MORSE BROS. INC. dba KNIFE RIVER CORPORATION
 COFFEE LAKE READY-MIX

P.O. BOX 80174
 PORTLAND, OR 97280
 (503) 319-8926

SEPTEMBER 28, 2011