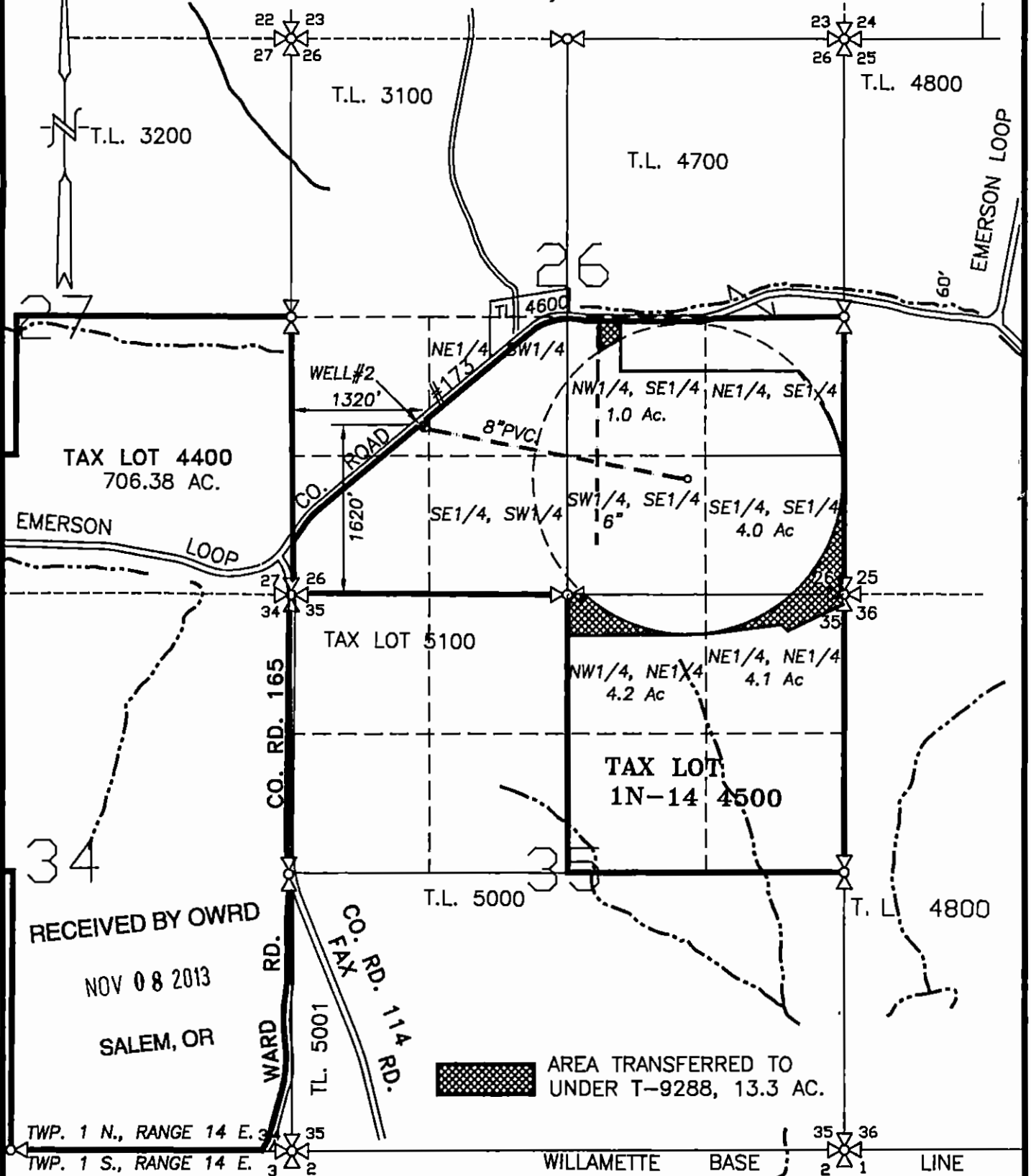


SECTIONS 26 AND 35, TWP.1 N. RANGE 14 E. W.M.
 WASCO COUNTY, OREGON



RECEIVED BY OWRD
 NOV 08 2013
 SALEM, OR

CLAIM OF BENEFICIAL USE MAP

SCALE: 1" = 1320'



TRANSFER No. T-9288

IN THE NAME OF:
OPAL HARTH TRUST

DATE: JANUARY 16, 2013



EXPIRES: 06/30/2014

BY: **TENNESON ENGINEERING CORP.**
 3775 CRATES WAY
 THE DALLES, OREGON. 97058
 PH. 541-296-9177
 FAX 541-296-6657



NOTE:

"THIS MAP IS NOT INTENDED TO PROVIDE DIMENSIONS OR LOCATIONS OF PROPERTY OWNERSHIP LINES."

(Tab COBU_T9288)

W.O. #10412wr