

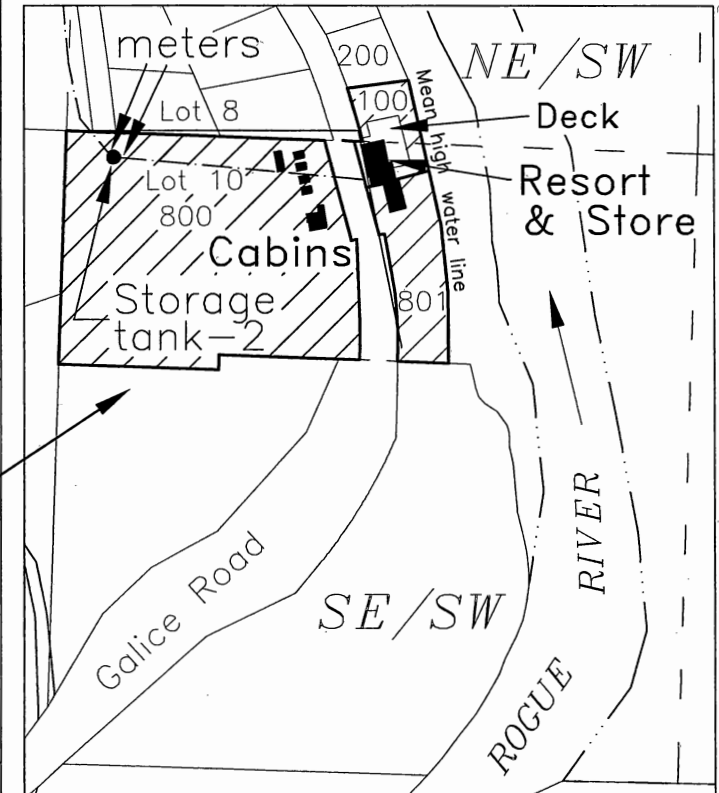
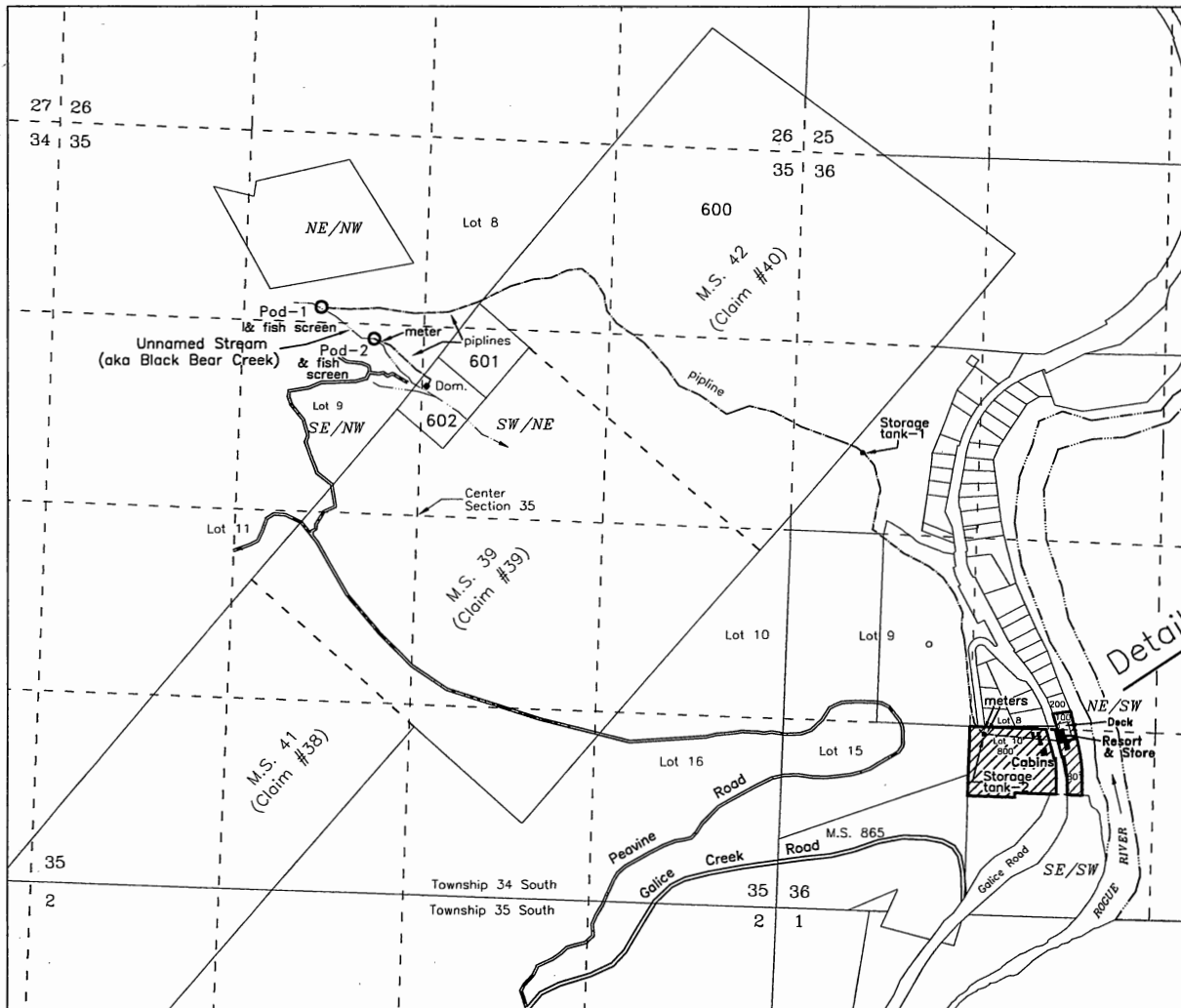
TOWNSHIP 34 SOUTH, RANGE 8 WEST, W.M.
JOSEPHINE COUNTY, OREGON

CLAIM OF BENEFICIAL USE
T-9468

IN THE NAME OF:
DEBBIE L. THOMASON

RECEIVED BY CWRL
DEC 30 2015
SALEM, OR

SECTION 36, T.34S., R.8W., W.M.



• Dom. - Domestic Use, SW/NE Section 35

 Commercial Uses, NE/SW & SE/SW Section 36

○ POD-1 Commercial Uses - NE/NW Section 35 1200 feet South and 3440 feet West from the Northeast Corner Section 35

○ POD-2 Domestic Use - SE/NW Section 35 1230 feet North and 350 feet West from the Center Corner Section 35

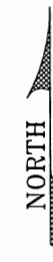
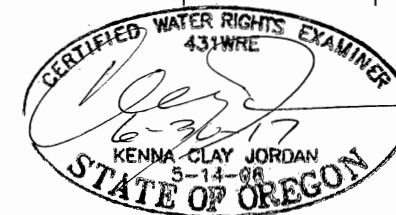
POD coordinates per previous water right surveys

Pipeline location is approximate

Scale: 1 inch = 1320 feet

Scale: 1 inch = 400 feet

Commercial Uses
NE/SW & SE/SW
Section 36



JORDAN ENGINEERING
460 JORDAN LANE
ROSEBURG, OR 97471
(541) 673-1931

6/1/2010 n.e.d.
rev-4-5/6/2015 n.e.d.

This map is not intended to provide legal dimensions or locations of property ownership lines

Base map - Josephine County
GIS and Partition Map 1992-4
2005 FSA & 2007 Google Aerials