

RECEIVED

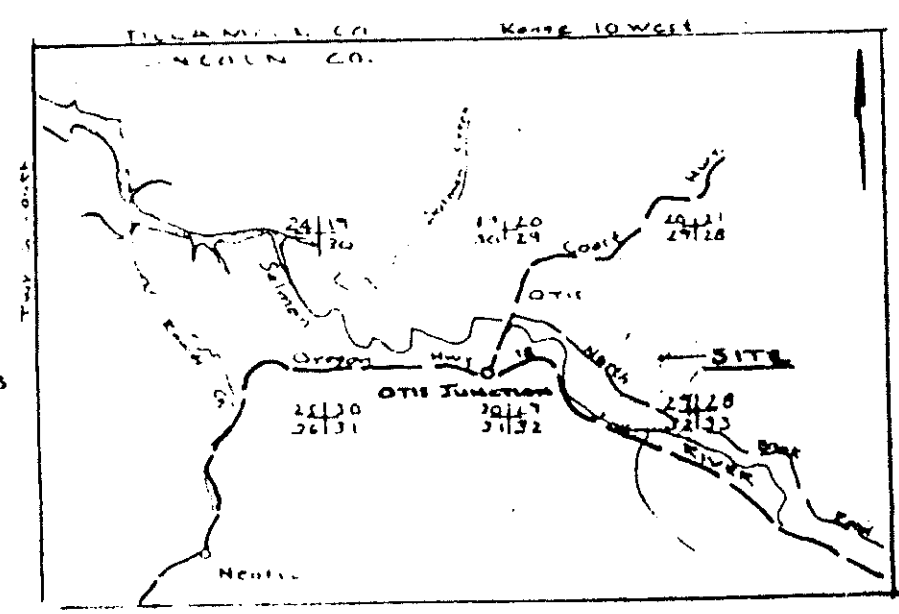
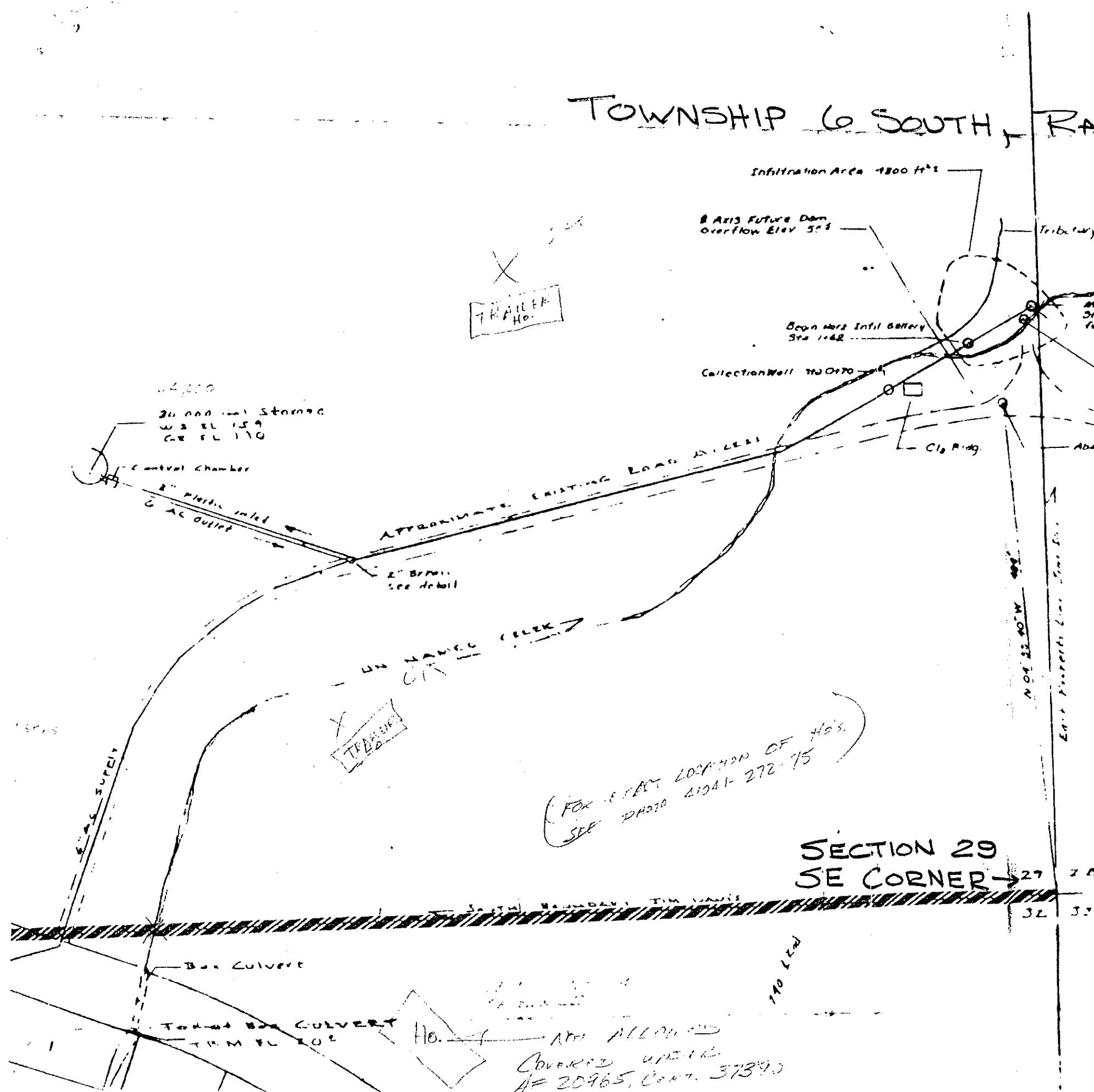
NOV 20 1985

WATER RESOURCES DEPT.
SALEM, OREGON

TOWNSHIP 6 SOUTH, RANGE 10 WEST, WM

SCALE 1" = 100'
POINT OF DIVERSION ONLY

Application No. 68617
Permit No. 49582



TRAILER Ho.

TRAILER Ho.

FOR EXACT LOCATION OF Ho's
SEE PHOTO 41941-272-75

SECTION 29
SE CORNER

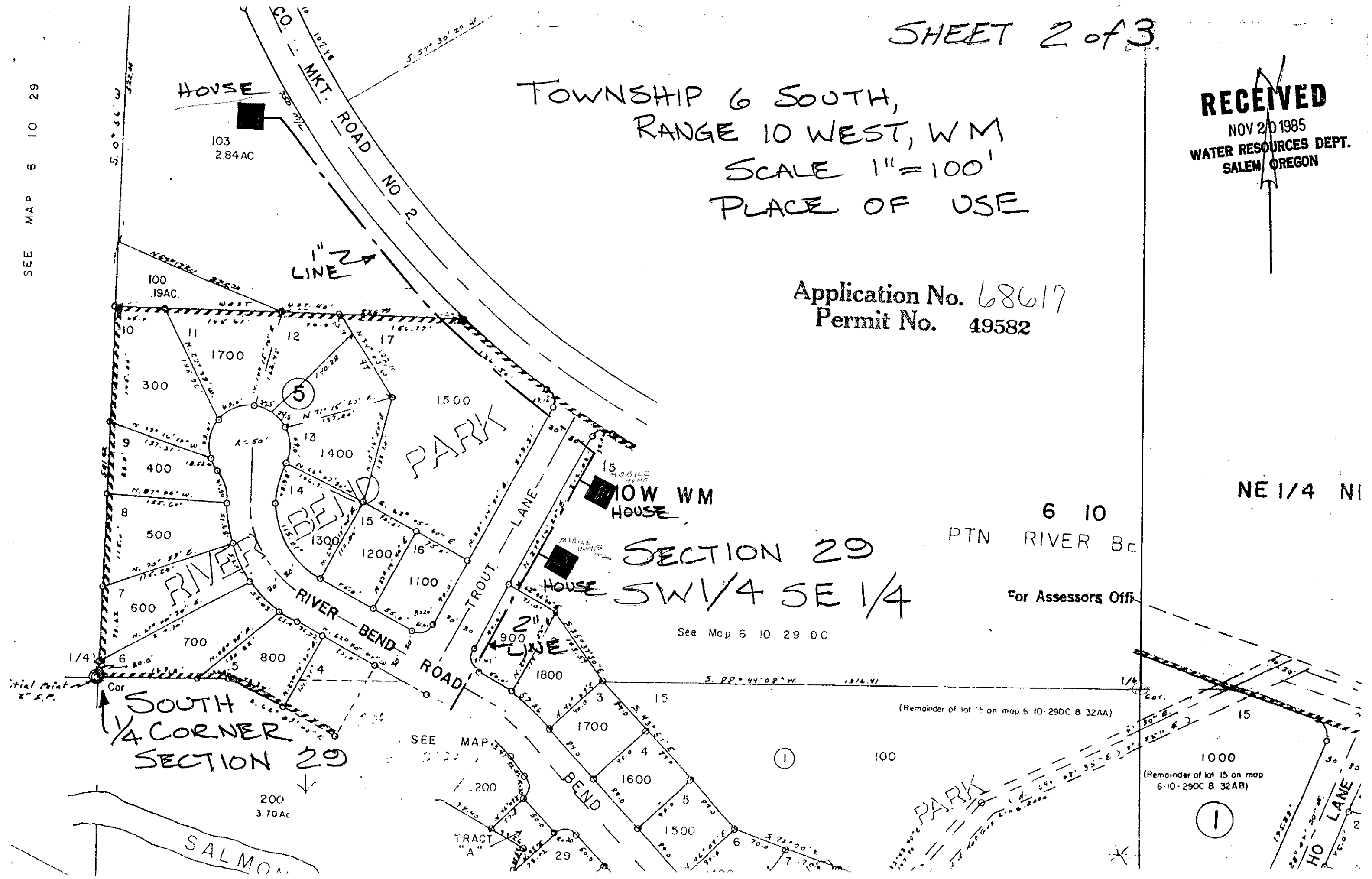
NOT ALLOWED
COVERED UNDER
AF 20965, Cont. 37390

RECEIVED
NOV 20 1985
WATER RESOURCES DEPT.
SALEM, OREGON

TOWNSHIP 6 SOUTH,
RANGE 10 WEST, WM
SCALE 1" = 100'
PLACE OF USE

Application No. 68617
Permit No. 49582

SEE MAP 6 10 29



NE 1/4 N1

6 10

PTN RIVER Bc

SECTION 29
SW 1/4 SE 1/4

For Assessors Office

See Map 6 10 29 DC

(Remainder of lot 15 on map 6 10 29DC & 32AA)

1000
(Remainder of lot 15 on map 6-10-29DC & 32AB)

SALMON

NE 1/4 NE 1/4 SECTION 32 T6S R10W WM

Assessors Office Use Only 6 10 32 A A

LINCOLN COUNTY

PTN. RIVER BEND PARK

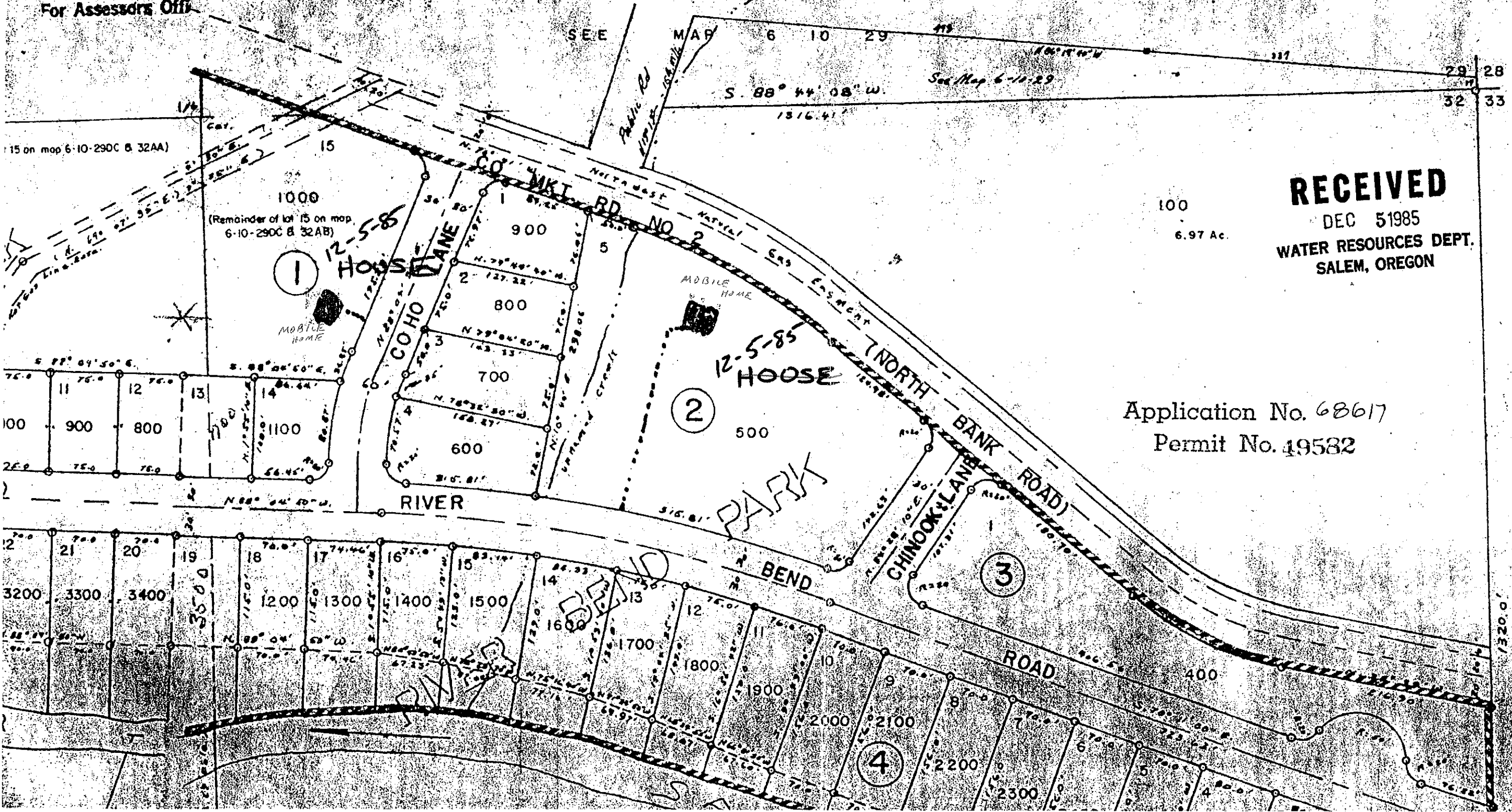
6 10

RIVER BE

SCALE - 1" = 100'

For Assessors Off

DEAD
302
303



RECEIVED
 DEC 5 1985
 WATER RESOURCES DEPT.
 SALEM, OREGON

Application No. 68617
 Permit No. 49582

MAP 6 10 33