

8 9  
17 16

NW 1/4, NW 1/4

CALAPOOIA RIVER

NE 1/4, NW 1/4  
RIVER

NNW COR  
MILES CAREY  
DLC 41

PUMP  
LOCATION

39296 HWY 228, SWEET HOME, OR  
SEC 16, T14S, R1W, W M TAX LOT: 201  
LINN COUNTY, OREGON  
SCALE 1"=400'



STATE

WATER LINE

HIGHWAY

NOT TO BE  
IRRIGATED

70

30

SW 1/4 NW 1/4

228  
SE 1/4, NW 1/4

280

290

PROPOSED  
WELL 2

NW 1/4, SW 1/4

NE 1/4, SW 1/4

PROPOSED  
WELL 1

PROPOSED WELL 1:  
100' SOUTH AND  
100' EAST OF  
NNW COR, SEC. 16  
100' FROM CALAPOOIA RIVER

PROPOSED WELL 2:  
100' SOUTH AND  
100' EAST OF  
NNW COR, SEC. 16  
100' FROM CALAPOOIA RIVER

SE COR.  
WILLIAM ROBINETT  
DLC 40

WLY NW COR.  
MILES CAREY  
DLC 41

2 AC  
NW 1/4 SW 1/4

10 AC  
NE 1/4 SW 1/4

AREA OF UNDERLYING RIGHTS CERT: 55114

AREA OF USE - PRIMARY

AREA TO BE DIMINISHED

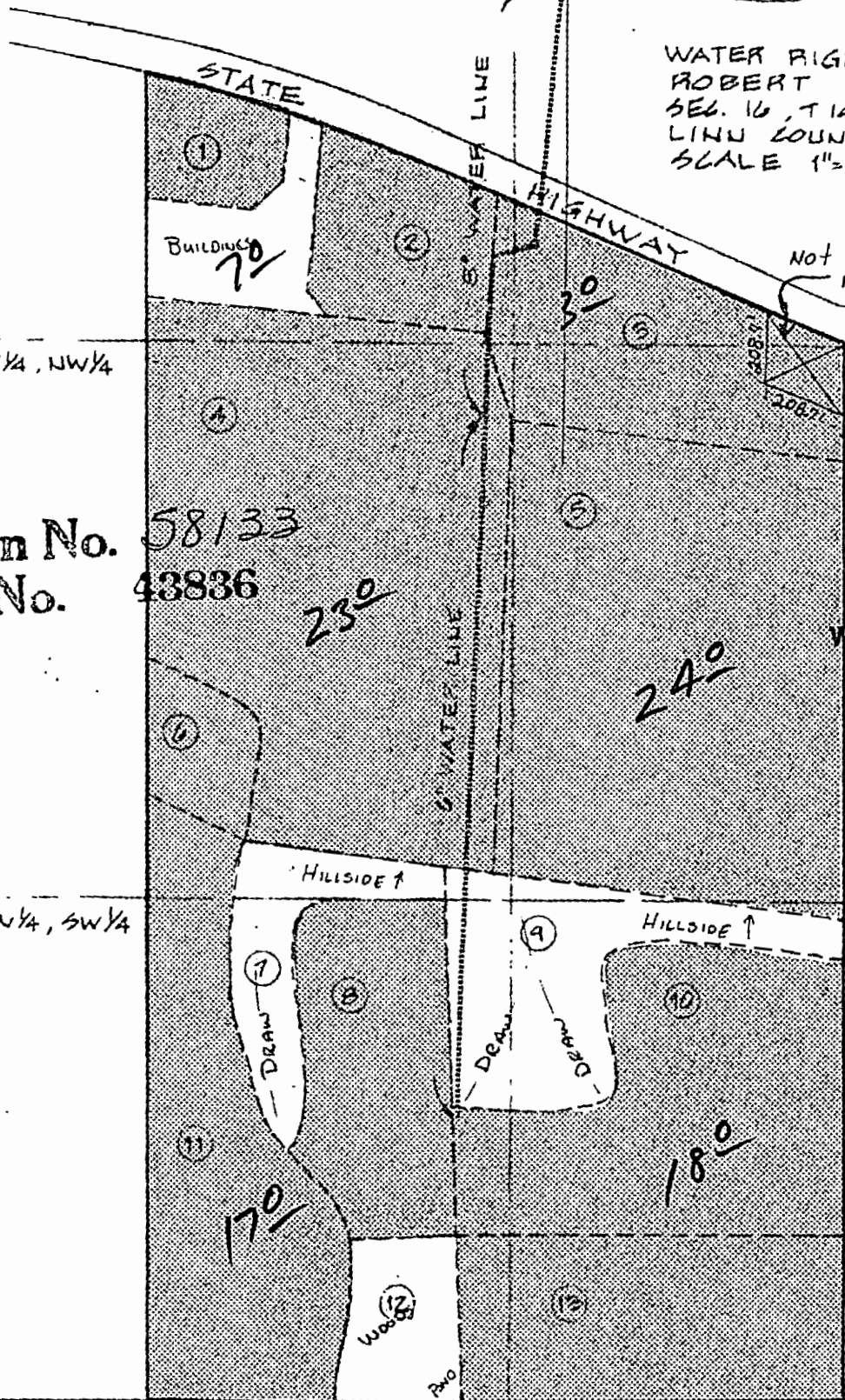
16  
NW 1/4, NW 1/4

130±  
DE 1/4, NW 1/4  
RIVER

17 NW 1/4 COR.  
MILES CAREY  
DLC 41

PUMP  
LOCATION

WATER RIGHTS MAP FOR  
ROBERT DOWNELL  
SEC. 16, T14S, R1W, W1M  
LINN COUNTY, OREGON  
SCALE 1" = 400' NOV. 27, 1978



Application No. 58133  
Permit No. 43836

**RECEIVED**

DEC 1 1978  
WATER RESOURCES DEPT.  
SALEM, OREGON

120

WLY NW COR  
MILES CAREY  
DLC 41

AREA TO BE IRRIGATED

SE COR.  
WILLIAM ROBINE  
DLC 40

