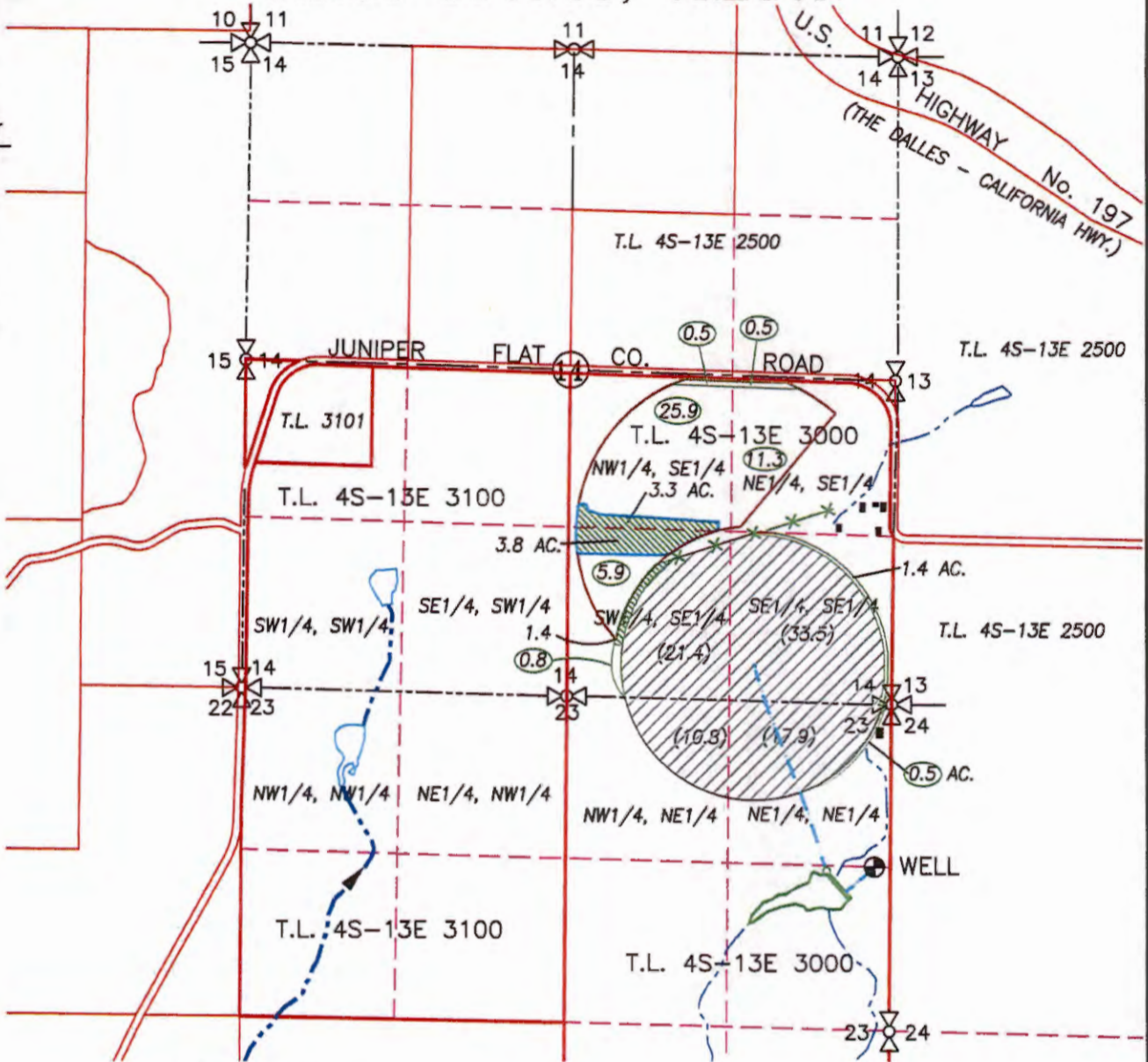


SECTIONS 14 & 23, TWP.4 S. RANGE 13 E. W.M.  
WASCO COUNTY, OREGON

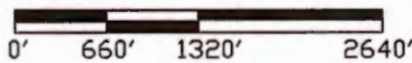


**LEGEND:**

- WELL: 1360' NORTH & 80' WEST OF THE E1/4 CORNER, SECTION 23
- TRANSFER OUT APPLICATION AREA = 7.1 ACRES (PRIMARY IRRIGATION) AND 1.4 ACRES (SUPPLEMENTAL IRRIGATION)
- NO CHANGE IN LOCATION - 85.0 ACRES (SUPPLEMENTAL IRRIGATION)
- TO BE CANCELED - (0.5)
- IRRIGATION MAIN
- STREAM WITH DIRECTIONAL FLOW

**WATER RIGHT TRANSFER MAP**

SCALE: 1" = 1320'



**OUT  
MAP #2**

TRANSFER No. \_\_\_\_\_

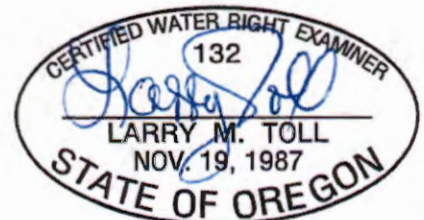
CERTIFICATE No. 76971

IN THE NAME OF:  
JOHN McELHERAN

DATE: APRIL 30, 2015  
AMENDED APRIL 27, 2017

BY: **TENNESON ENGINEERING CORP.**

3775 CRATES WAY  
THE DALLES, OREGON. 97058  
PH. 541-296-9177  
FAX 541-296-6657



**NOTE:** EXPIRES: 06/30/2018

"THIS MAP IS NOT INTENDED TO PROVIDE DIMENSIONS OR LOCATIONS OF PROPERTY OWNERSHIP LINES."

W.O. #14472wr