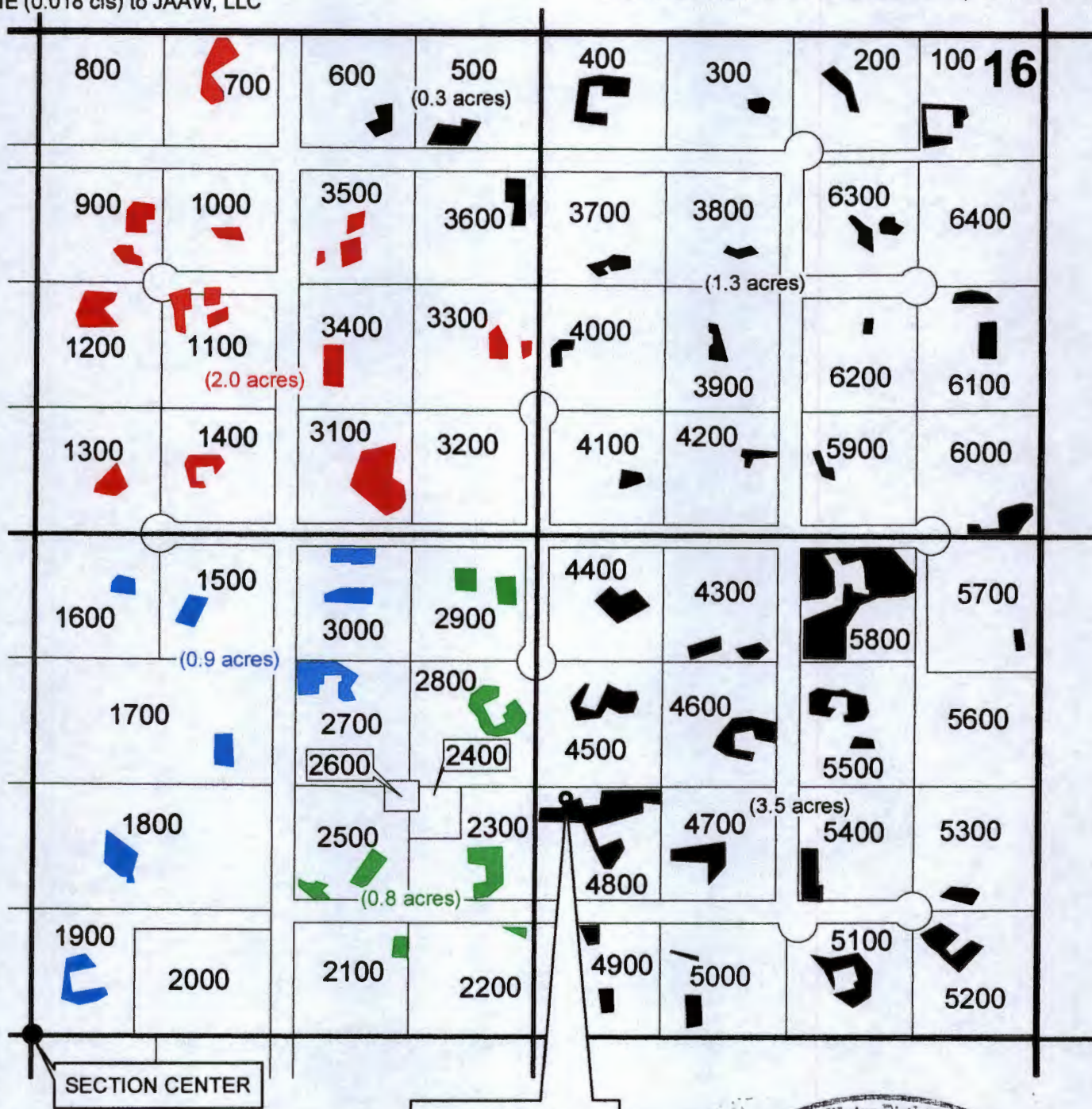


0 200 400 800 1,200 1,600 Feet
1" = 400'

T 17 S, R 13 E, WM
NE 1/4 SECTION 16
DESCHUTES COUNTY, OREGON

All Group Domestic (0.06 cfs) OFF as follows:
NWNE & NENE (0.029 cfs) to Oregrown, Inc.
SWNE (0.013 cfs) to Elite Soil, LLC
SENE (0.018 cfs) to JAAW, LLC

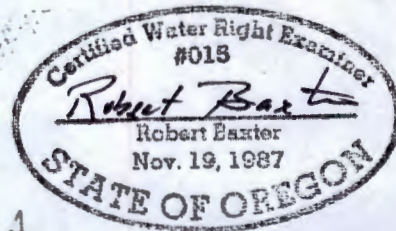


- POU IR Remaining
- POU IR OFF to JAAW, LLC
- POU IR OFF to Elite Soil, LLC
- POU IR OFF to Oregrown, Inc.

WELL - 640' N
1400' E FROM
SECTION CENTER

RECEIVED BY OWRD

DEC 08 2015 12214



RENEWAL DATE 12-31-2015

**Transfer OFF Map for
Certificate 90952**

December 2, 2015

This map is not intended
to provide legal dimensions
or locations of property
ownership lines.

WATER RIGHT SERVICES, LLC

PO BOX 1830, BEND, OR 97709

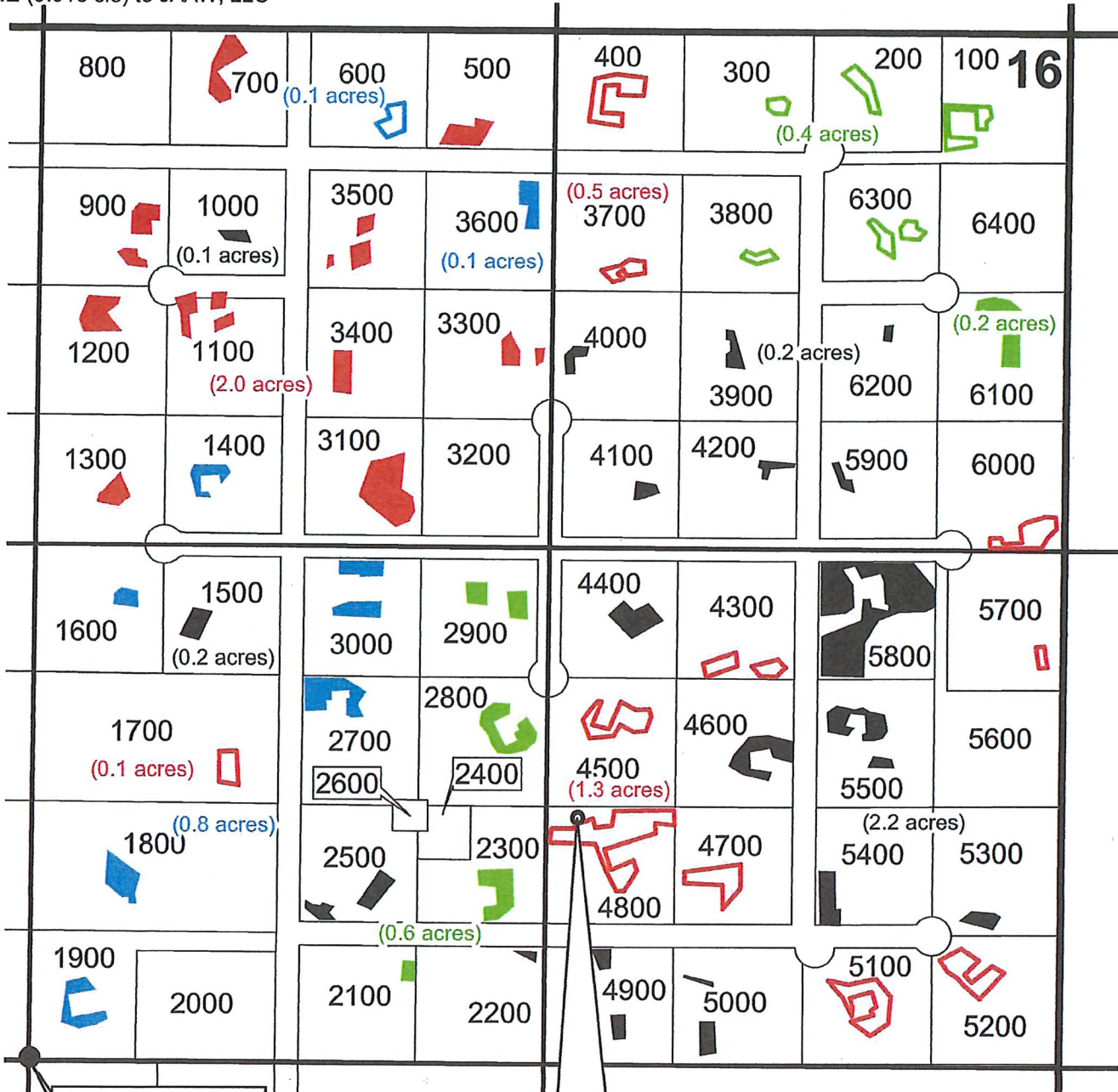
WWW.OREGONWATER.US 541-389-2837

johnshort@usa.com CCB # 197121

0 200 400 800 1,200 1,600 Feet
1" = 400'

**T 17 S, R 13 E, WM
NE 1/4 SECTION 16
DESCHUTES COUNTY, OREGON**

All Group Domestic (0.06 cfs) OFF as follows:
NWNE & NENE (0.029 cfs) to Oregrown, Inc.
SWNE (0.013 cfs) to Elite Soil, LLC
SENE (0.018 cfs) to JAAW, LLC



SECTION CENTER

Irrigation POU

WELL - 640' N
1400' E FROM
SECTION CENTER

- POU IR Remaining
- To Oregrown, Inc.
- To Elite Soil, LLC
- To JAAW, LLC
- To Hamond Nursery
- To Glass House Grown
- To S20 Dynamics

RECEIVED BY OWRD

OCT 03 2017



SALEM, OR

RENEWAL DATE 12-31-2018

**Transfer OFF Map for
Certificate 90952**

OCT 3, 2017

This map is not intended to provide legal dimensions or locations of property ownership lines.

WATER RIGHT SERVICES, LLC
PO BOX 1830, BEND, OR 97709
WWW.OREGONWATER.US 541-389-2837
johnshort@usa.com CCB # 197121