

RECEIVED  
JUN 26 2017  
OWRD

#784

# CLAIM OF BENEFICIAL USE AND FINAL PROOF MAP

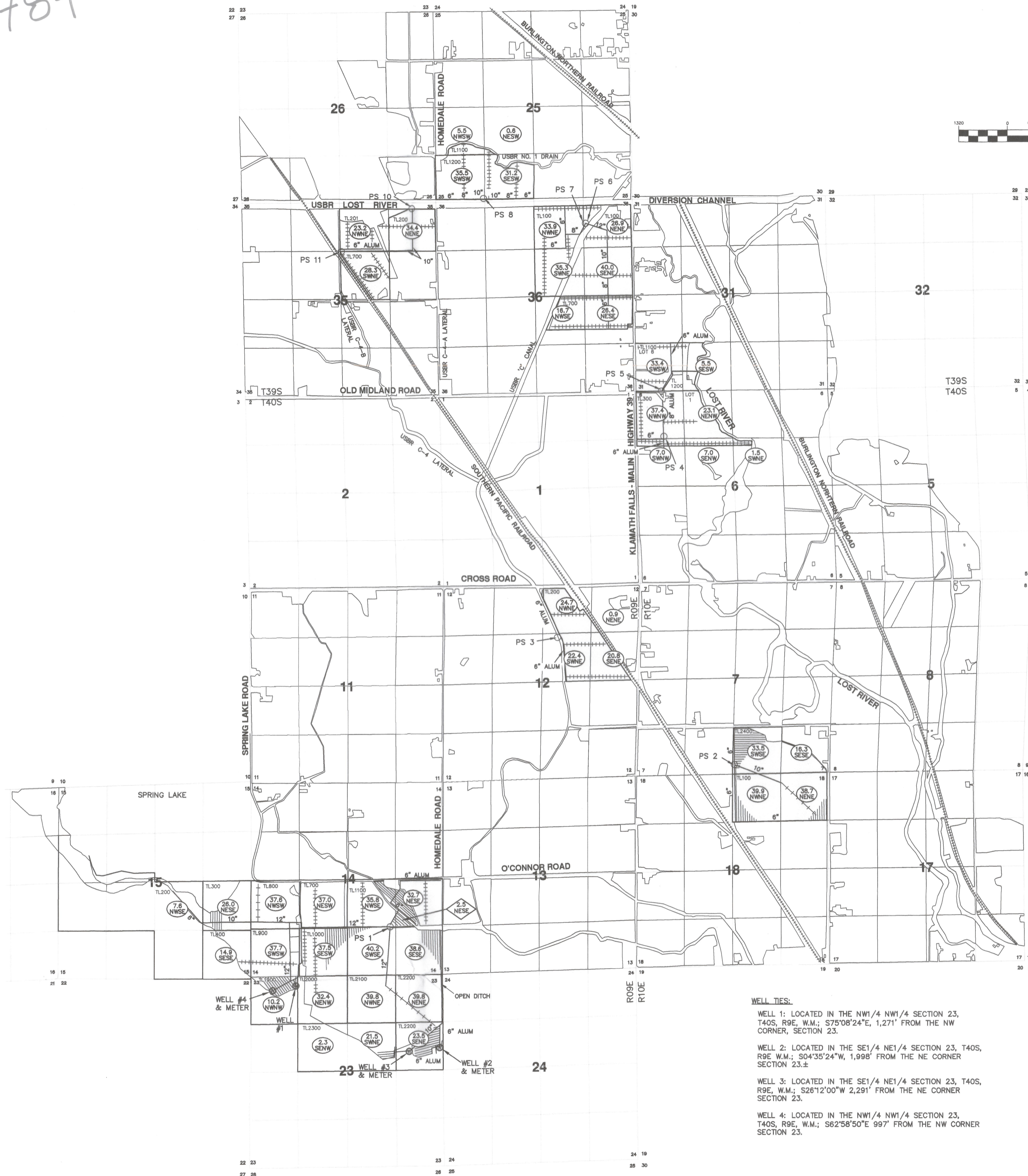
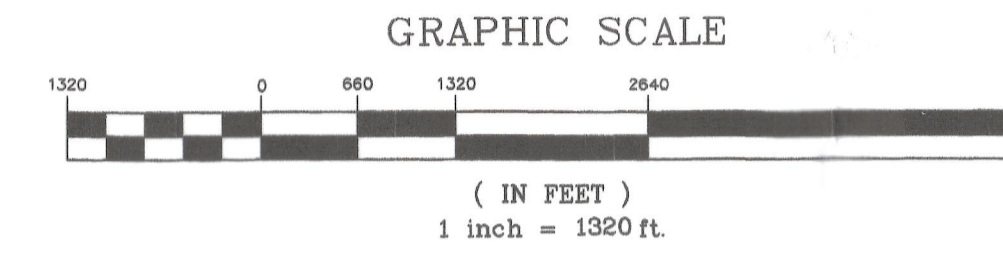
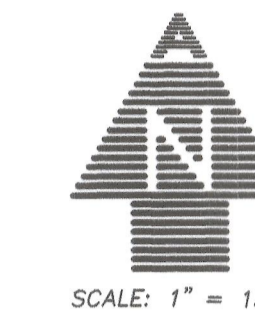
FOR  
DALE FLEMING

T39S, R09E, Sec. 25, 35 & 36, W.M.  
T39S, R10E, Sec. 31, W.M.  
T40S, R09E, Sec. 12, 14, 15 & 23, W.M.  
T40S, R10E, Sec. 6, 7, & 18, W.M.

KLAMATH COUNTY, OREGON  
APPLICATION No. G-15699  
PERMIT No. G-15268

**NOTES:**

1. THIS MAP WAS PREPARED FROM FIELD MEASUREMENTS, KLAMATH RIVER ADJUDICATION MAPS, NAIP 2005 AERIAL PHOTOGRAPH, KLAMATH COUNTY TAX MAPS 391009C, 391016 & 391017 AND OREGON GLO MAPS.
2. THE PURPOSE OF THIS MAP IS TO IDENTIFY THE LOCATION OF THE WATER RIGHT ONLY, AND IS NOT INTENDED TO PROVIDE DIMENSIONS OR LOCATION OF PROPERTY LINES.
3. FOR TAX LOT INFORMATION, SEE TAX MAPS INCLUDED WITH THIS APPLICATION.
4. DATE OF PRIORITY FOR THIS APPLICATION IS MAY 17, 2001 FOR PERMIT G-15028.



**WELL TIES:**

- WELL 1: LOCATED IN THE NW1/4 NW1/4 SECTION 23, T40S, R9E, W.M.; S75°08'24"E, 1,271' FROM THE NW CORNER, SECTION 23.
- WELL 2: LOCATED IN THE SE1/4 NE1/4 SECTION 23, T40S, R9E, W.M.; S04°35'24"W, 1,998' FROM THE NE CORNER SECTION 23.
- WELL 3: LOCATED IN THE SE1/4 NE1/4 SECTION 23, T40S, R9E, W.M.; S26°12'00"W, 2,291' FROM THE NE CORNER SECTION 23.
- WELL 4: LOCATED IN THE NW1/4 NW1/4 SECTION 23, T40S, R9E, W.M.; S62°58'50"E, 997' FROM THE NW CORNER SECTION 23.

GOVT TL	1/4 1/4	SECTION	TOWNSHIP	RANGE	SUPPLEMENTAL IRRIGATED ACREAGE
0	NE SW	25	39S	9E	0.6
0	NW SW				5.5
0	SW SW				35.5
0	SE SW				31.2
0	NE NE	35	39S	9E	34.4
0	NW NE				23.2
0	SW NE				28.3
0	NE NE	36	39S	9E	26.9
0	NW NE				33.9
0	SW NE				35.3
0	SE NE				40.0
0	NE SE				26.4
0	NW SE				16.7
6	SW SW	31	39S	10E	33.4
6	SE SW				5.5
0	NE NE	12	40S	9E	0.9
0	NW NE				24.7
0	SW NE				22.4
0	SE NE				20.8
0	NE SW	14	40S	9E	37.0
0	NW SW				37.6
0	SW SW				37.7
0	SE SW				37.5
0	NE SE				32.7
0	NW SE				35.8
0	SW SE				40.2
0	SE SE				38.6

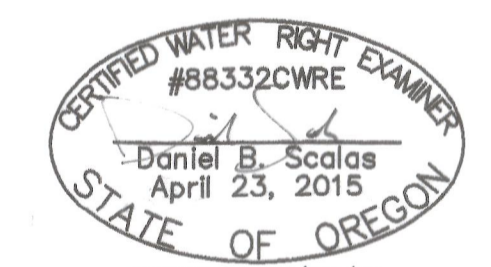
GOVT TL	1/4 1/4	SECTION	TOWNSHIP	RANGE	SUPPLEMENTAL IRRIGATED ACREAGE
0	NE SE	15	40S	9E	26.0
0	NW SE				7.6
0	SE SE				14.9
0	NE NE	23	40S	9E	39.8
0	NW NE				39.8
0	SW NE				21.5
0	SE NE				23.5
0	NE NW				32.4
0	NW NW				10.2
0	SE NW				2.3
2	SW NE	6	40S	10E	1.5
1	NE NW				23.1
0	NW NW				37.4
0	SW NW				7.0
2	SE NW				7.0
0	SW SE	7	40S	10E	33.5
0	SE SE				16.3
0	NE NE	18	40S	10E	35.7
0	NW NE				39.9

TOTAL ACRES SUPPLEMENTAL IRRIGATION: 1165.1

GOVT TL	1/4 1/4	SECTION	TOWNSHIP	RANGE	PRIMARY IRRIGATED ACREAGE
0	NE SE	14	40S	09E	2.5

**LEGEND**

- TOTAL SUPPLEMENTAL ACRES IRRIGATED PER 1/4 1/4 IRRIGATED LANDS THIS CLAIM OF BENEFICIAL USE 1/4 1/4 SECTION
- TOTAL PRIMARY ACRES IRRIGATED PER 1/4 1/4 IRRIGATED LANDS THIS CLAIM OF BENEFICIAL USE 1/4 1/4 SECTION
- 10" ALL MAINS ARE BURIED PVC UNLESS OTHERWISE NOTED
- PIVOT LINE
- WHEEL LINES
- 1/4 1/4 LINES
- TAX LOT BOUNDARY
- EXISTING WELL
- PS 4 PUMP STATION NUMBER
- 6 SECTION NUMBER
- T39S R09E SECTION DESIGNATION
- 40T GOVERNMENT LOT NUMBER
- TL2400 TAX LOT NUMBER



ADKINS IS PROVIDING AN UPDATED MAP TO CORRECT AN ERROR ON MAP PREVIOUSLY SUBMITTED 12/18/2012 AND NO OTHER CORRECTIONS FOR THE CLAIM ARE NEEDED.

**CLAIM OF BENEFICIAL USE & FINAL PROOF MAP**  
**FOR DALE FLEMING**  
 T39S, R09E, W.M. PORTIONS OF SECTIONS 25, 35, AND 36  
 T39S, R10E, W.M. PORTION OF SECTION 31  
 T40S, R09E, W.M. PORTIONS OF SECTIONS 12, 14, 15 AND 23  
 T40S, R10E, W.M. PORTIONS OF SECTIONS 6, 7, AND 18  
 KLAMATH COUNTY, OREGON

**ADKINS**  
 CONSULTING ENGINEERING, LLC  
 2550 Shasta Way - Klamath Falls, Oregon 97603 - (541) 884-6866 - FAX (541) 884-5335  
 Oregon - California  
 ENGINEERS - PLANNERS - SURVEYORS  
 COPYRIGHT © 2012 ADKINS CONSULTING ENGINEERING, LLC

DESIGNED BY	SCALE
SURVEYED BY	1" = 1320'
DRAWN BY	DATE
CHECKED BY	12/18/12
PROJECT FILE	SHEET
	1 OF 1
	FILE 2641-01

No. \_\_\_\_\_  
 REVISION \_\_\_\_\_  
 DATE \_\_\_\_\_