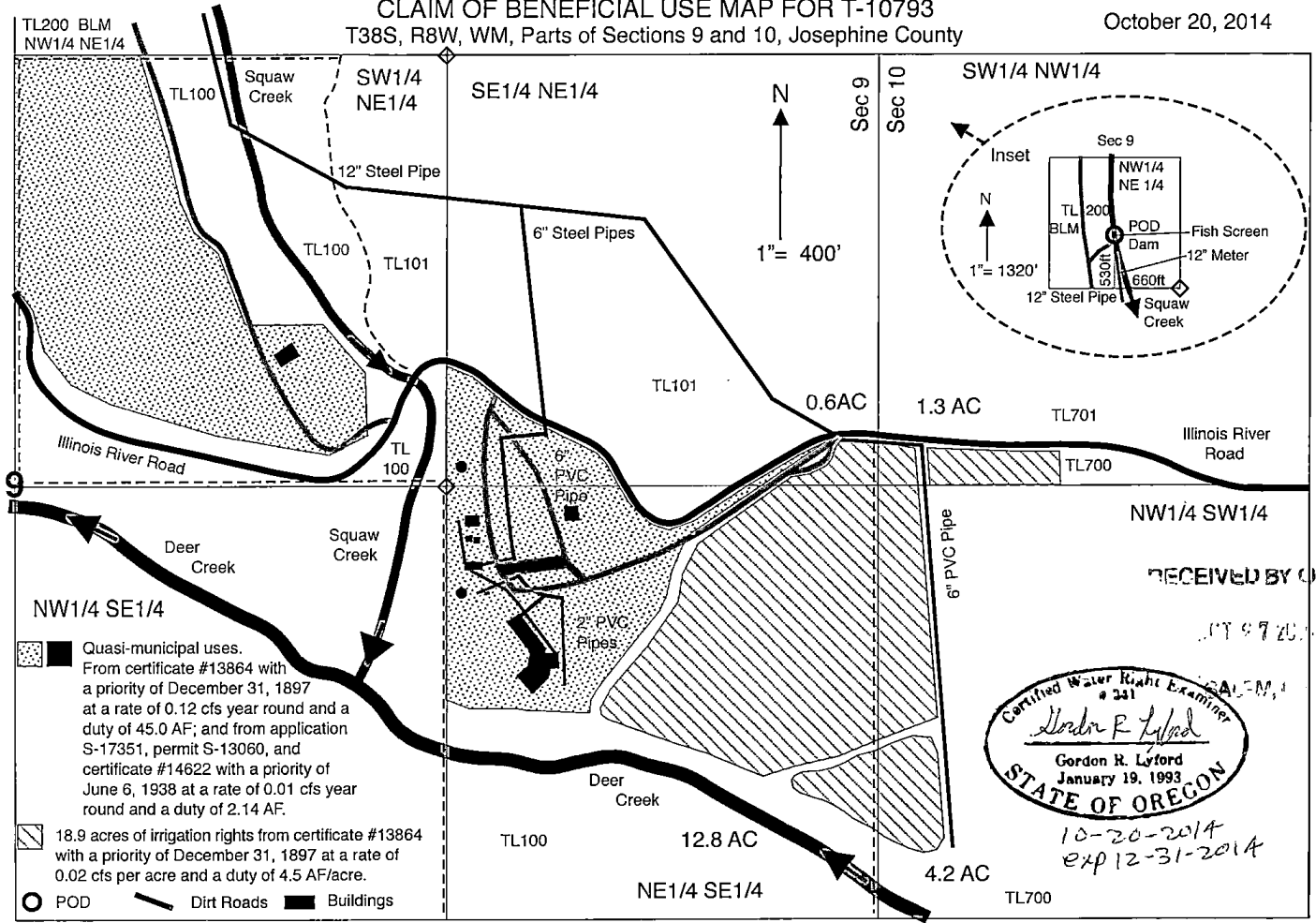


CLAIM OF BENEFICIAL USE MAP FOR T-10793  
T38S, R8W, WM, Parts of Sections 9 and 10, Josephine County

October 20, 2014



- Quasi-municipal uses. From certificate #13864 with a priority of December 31, 1897 at a rate of 0.12 cfs year round and a duty of 45.0 AF; and from application S-17351, permit S-13060, and certificate #14622 with a priority of June 6, 1938 at a rate of 0.01 cfs year round and a duty of 2.14 AF.
- 18.9 acres of irrigation rights from certificate #13864 with a priority of December 31, 1897 at a rate of 0.02 cfs per acre and a duty of 4.5 AF/acre.
- POD
- Dirt Roads
- Buildings

RECEIVED BY OWNER  
OCT 27 2014

Gordon R. Lyford  
 January 19, 1993  
 STATE OF OREGON  
 10-20-2014  
 exp 12-31-2014

This map was drawn by Gordon R. Lyford for the Siskiyou Field Institute to support their Claim of Beneficial Use under T-10793. The SFI owns tax lots 100 and 700. This map was prepared for the purpose of identifying the location of water rights only and is not intended to provide legal dimensions or the location of property ownership lines.