

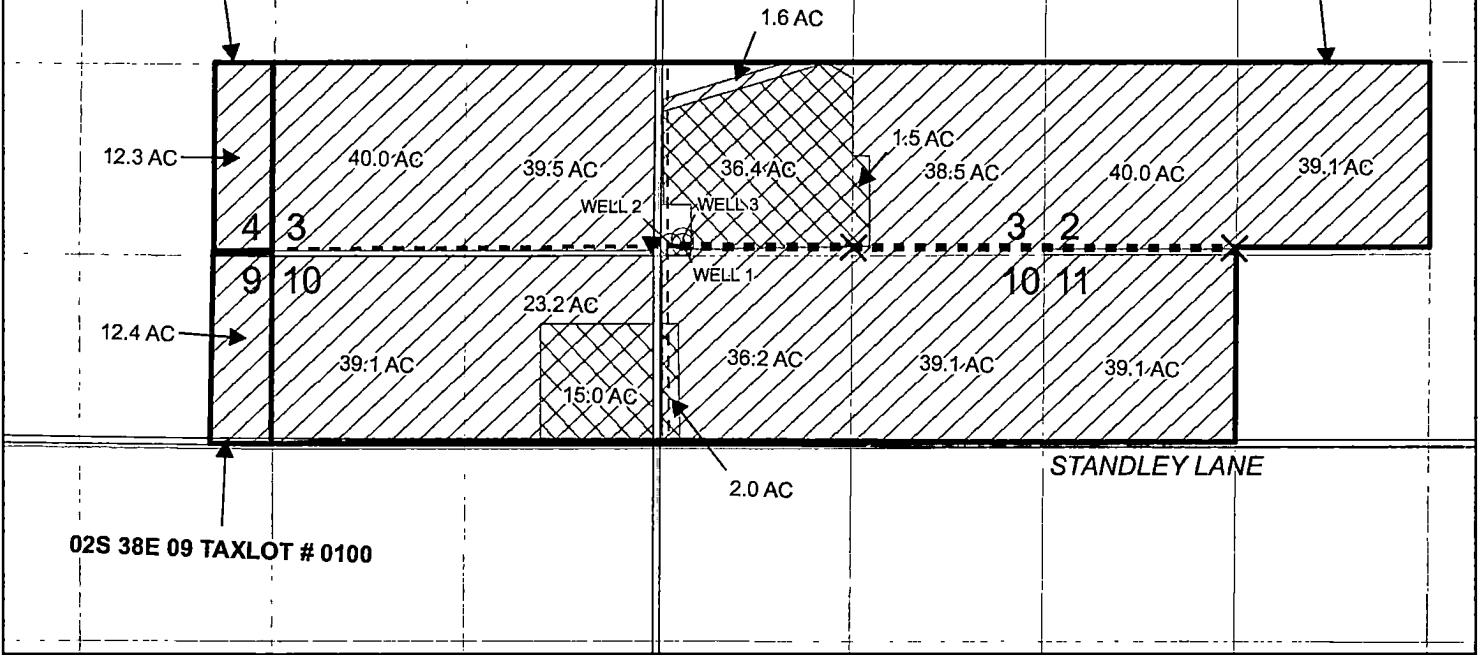
EXPIRES ON DATE: 12.31.2014

T 2 S R 38 E

HUNTER ROAD

02S 38E TAXLOT # 1000

02S 38E 04 TAXLOT # 2600



LEGEND

- AUTHORIZED AND ACTUAL IRRIGATION AREA- PRIMARY (400.1 ACRES)
- AUTHORIZED AND ACTUAL IRRIGATION AREA - SUPPLEMENTAL (54.9 ACRES)
- TAXLOT BOUNDARY
- PLSS QUARTER-QUARTER SECTIONS
- 10 INCH PVC MAIN-LINE
- 8 INCH ALUMINUM MAIN-LINE
- 5 INCH ALUMINUM MAIN-LINE
- ROAD
- 10" MAIN-LINE ELBOW CONNECTION
- CENTER PIVOT PAD
- WELL

NOTES:
THIS MAP IS NOT INTENDED TO PROVIDE LEGAL DIMENSIONS OR LOCATIONS OF PROPERTY OWNERSHIP LINES.

UNION COUNTY TAX LOTS NOTED ON FIGURE.

AREA EAST OF HUNTER ROAD IS IRRIGATED WITH 2 CENTER PIVOTS AND HANDLINES

AREA WEST OF HUNTER ROAD IS IRRIGATED WITH HANDLINES ONLY

LOCATIONS OF POINTS OF DIVERSION:

- WELL 1: 10 FEET NORTH AND 2460 FEET WEST FROM THE SOUTHEAST CORNER OF SECTION 3
- WELL 2: 79 FEET NORTH AND 2548 FEET WEST FROM THE SOUTHEAST CORNER OF SECTION 3
- WELL 3: 40 FEET NORTH AND 2460 FEET WEST FROM THE SOUTHEAST CORNER OF SECTION 3

LOCATION OF THE REQUIRED TOTALIZING IN-LINE FLOW METER:

10 FEET SOUTH OF WELL 3, IN LINE WITH THE 10 INCH PUMP OUTLET MAIN-LINE.



1 inch = 1,320 feet

FARALLON
CONSULTING
Quality Service for Environmental Solutions | farallonconsulting.com

Washington
Issaquah | Bellingham | Seattle

Oregon
Portland

California
Oakland | Sacramento

EXHIBIT A
CLAIM OF BENEFICIAL USE MAP
TERRA MAGIC INC. PROPERTY
TRANSFER: T-10455
UNION COUNTY, OREGON

Farallon PN: 1343001

Drawn By: PFG

Checked By: REL

Date: 10/1/14

Disc Reference: 1343001