

RENEWAL DATE 12/31/15

# COBU MAP #813

NE 1/4 NE 1/4

## LAIM OF BENEFICIAL USE MAP FOR LINN-BENTON COMMUNITY COLLEGE

LOCATED IN THE SEC. 25, T. 11 S., R. 4 W., W.M. ALBANY, LINN COUNTY OREGON FEBRUARY 26, 2014

APPLICATION FILE No. G-14438 PERMIT No. G-13380

**APPLICANT/OWNER:**  
LINN-BENTON COMMUNITY COLLEGE  
6500 SW PACIFIC BLVD.  
ALBANY, OREGON 97321

**TAX LOTS:**  
TL 703 (MAP 11-4W-25)  
TL 1200 (MAP 11-4W-25)

**LEGEND:**

- ZONE 1  
8.6 ACRES
- ZONE 2  
13.4 ACRES
- ZONE 3  
11.1 AC.
- ZONE 4  
18.5 ACRES
- EXISTING WELL AND METER
- ZONE VALVE
- EXISTING WATER LINE (APPROX. LOCATION); ALL LINES SHOWN ARE BURRIED 3" + 4" PVC
- 8.0 AC. IRRIGATION AREA PER 1/4 1/4 OR GOVERNMENT LOT
- Z1-W ZONE 1 - IRRIGATION LINE
- Z2-W ZONE 2 - IRRIGATION LINE
- Z3-W ZONE 3 - IRRIGATION LINE
- Z4-W ZONE 4 - IRRIGATION LINE

**POINTS OF DIVERSION:**

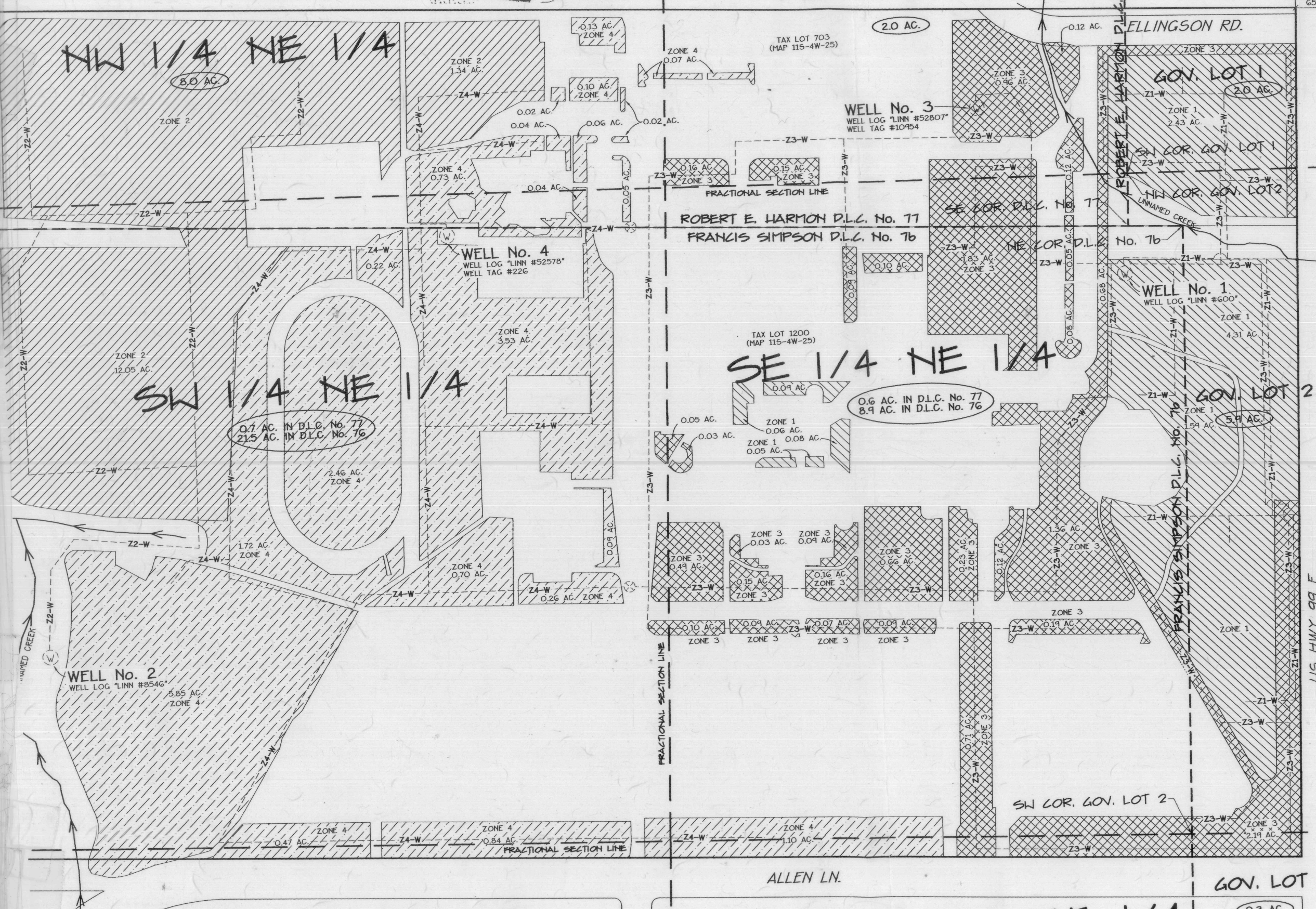
WELL No.	LOCATION FROM NE COR. SEC. 25	COORDINATE
WELL 1	1521' SOUTH 470' WEST	44°35'16"N 123°06'40"W
WELL 2	2190' SOUTH 2653' WEST	44°35'09"N 123°07'10"W
WELL 3	1176' SOUTH 750' WEST	44°35'19"N 123°06'44"W
WELL 4	1384' SOUTH 1823' WEST	44°35'17"N 123°06'59"W

**BASIS OF IRRIGATION AREAS:**  
LINN COUNTY G.I.S. MAPS AND DATA FROM 2005 WAS USED TO DETERMINE AREAS.

**BOUNDARY NOTE:**  
THIS MAP DOES NOT CONSTITUTE A BOUNDARY SURVEY AND IS SUBJECT TO ANY INACCURACIES THAT A BOUNDARY SURVEY MAY DISCLOSE. THE BOUNDARY SHOWN IS BASED UPON RECORD INFORMATION FROM SURVEYS FILED IN THE OFFICE OF THE LINN COUNTY SURVEYOR AND TAX LOT MAPS FROM THE LINN COUNTY ASSESSOR.

**PLACE OF USE - ALL IN SECTION 25:**

D.L.C. No. 77	NW 1/4 NE 1/4	8.0 ACRES
D.L.C. No. 77	NE 1/4 NE 1/4	2.0 ACRES
GOV. LOT 1	NE 1/4 NE 1/4	2.0 ACRES
D.L.C. No. 77	SW 1/4 NE 1/4	0.7 ACRES
D.L.C. No. 76	SW 1/4 NE 1/4	21.5 ACRES
D.L.C. No. 77	SE 1/4 NE 1/4	0.6 ACRES
D.L.C. No. 76	SE 1/4 NE 1/4	8.9 ACRES
GOV. LOT 2	SE 1/4 NE 1/4	5.9 ACRES
D.L.C. No. 76	NW 1/4 SE 1/4	0.8 ACRES
D.L.C. No. 76	NE 1/4 SE 1/4	0.9 ACRES
GOV. LOT 3	NE 1/4 SE 1/4	0.3 ACRES



NW 1/4 SE 1/4

NE 1/4 SE 1/4

SE COR. GOV. LOT 1 & NE COR. GOV. LOT 2

SECTION 25, T. 11 S., R. 4 W.

SECTION 25, T. 11 S., R. 4 W.

COR. V. LOT 2 & 1/4 COR. 25

