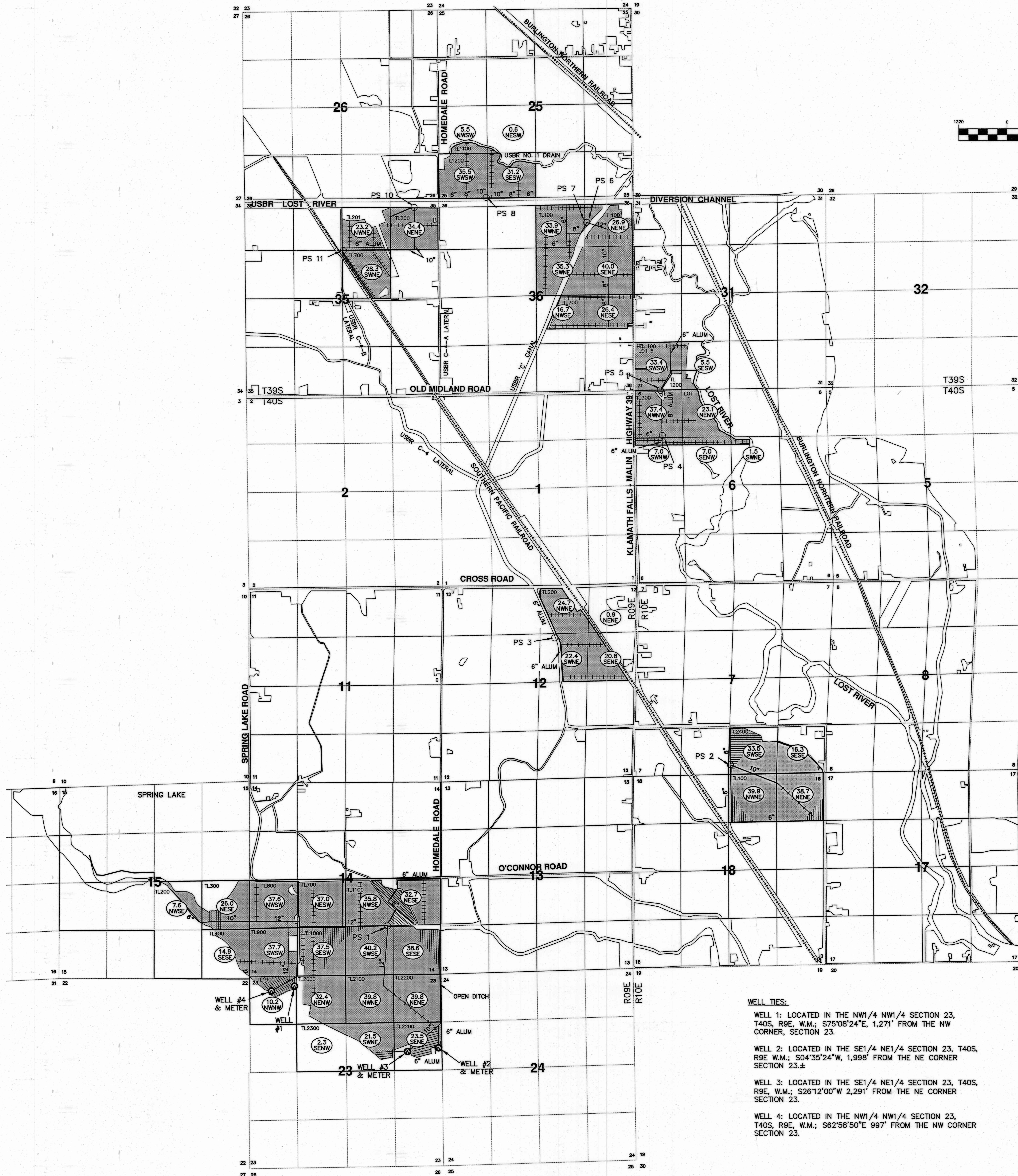
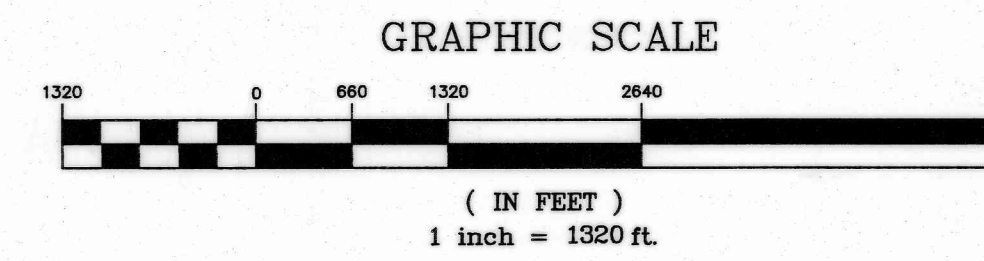
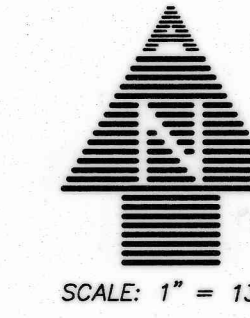


COBU MAP# 1131

# CLAIM OF BENEFICIAL USE AND FINAL PROOF MAP

FOR  
DALE & JANICE FLEMING, FLEMING LIVING TRUST  
AND NW FARM CREDIT SERVICES, FLCA

T39S, R09E, Sec. 25, 35 & 36, W.M.  
T39S, R10E, Sec. 31, W.M.  
T40S, R09E, Sec. 12, 14, 15 & 23, W.M.  
T40S, R10E, Sec. 6, 7, & 18, W.M.  
KLAMATH COUNTY, OREGON  
APPLICATION No. G-15502  
PERMIT No. G-15028



**NOTES:**

1. THIS MAP WAS PREPARED FROM FIELD MEASUREMENTS, KLAMATH RIVER ADJUDICATION MAPS, MAP 2005 AERIAL PHOTOGRAPH, KLAMATH COUNTY TAX MAPS 391009C, 391016 & 391017 AND OREGON GLO MAPS.
2. THE PURPOSE OF THIS MAP IS TO IDENTIFY THE LOCATION OF THE WATER RIGHT ONLY, AND IS NOT INTENDED TO PROVIDE DIMENSIONS OR LOCATION OF PROPERTY LINES.
3. FOR TAX LOT INFORMATION, SEE TAX MAPS INCLUDED WITH THIS APPLICATION.
4. DATE OF PRIORITY FOR THIS APPLICATION IS MAY 17, 2001 FOR PERMIT G-15028.

GOV'T TL	1/4 1/4	SECTION	TOWNSHIP	RANGE	SUPPLEMENTAL IRRIGATED ACREAGE
0	NE SE	25	39S	9E	0.6
0	NW SW				5.5
0	SW SW				35.5
0	SE SW				31.2
0	NE NE	35	39S	9E	34.4
0	NW NE				23.2
0	SW NE				28.3
0	NE NE	36	39S	9E	26.9
0	NW NE				33.9
0	SW NE				35.3
0	SE NE				40.0
0	NE SE				26.4
0	NW SE				16.7
6	SW SW	31	39S	10E	33.4
6	SE SW				5.5
0	NE NE	12	40S	9E	0.9
0	NW NE				24.7
0	SW NE				22.4
0	SE NE				20.8
0	NE SW	14	40S	9E	37.0
0	NW SW				37.6
0	SW SW				37.7
0	SE SW				37.5
0	NE SE				32.7
0	NW SE				35.8
0	SW SE				40.2
0	SE SE				36.6

GOV'T TL	1/4 1/4	SECTION	TOWNSHIP	RANGE	SUPPLEMENTAL IRRIGATED ACREAGE
0	NE SE	15	40S	9E	26.0
0	NW SE				7.6
0	SE SE				14.9
0	NE NE	23	40S	9E	39.8
0	NW NE				39.8
0	SW NE				21.5
0	SE NE				23.5
0	NE NW				32.4
0	NW NW				10.2
0	SE NW				2.3
2	SW NE	6	40S	10E	1.5
1	NE NW				23.1
0	NW NW				37.4
0	SW NW				7.0
2	SE NW				7.0
0	SW SE	7	40S	10E	33.5
0	SE SE				16.3
0	NE NE	18	40S	10E	38.7
0	NW NE				39.9

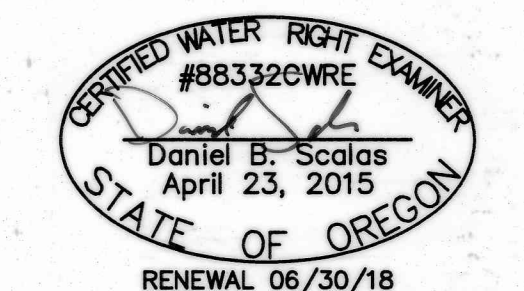
TOTAL ACRES IRRIGATION: 1165.1

**WELL TIES:**

- WELL 1: LOCATED IN THE NW1/4 NW1/4 SECTION 23, T40S, R9E, W.M.; S75°08'24"E, 1,271' FROM THE NW CORNER, SECTION 23.
- WELL 2: LOCATED IN THE SE1/4 NE1/4 SECTION 23, T40S, R9E, W.M.; S04°35'24"W, 1,998' FROM THE NE CORNER SECTION 23.
- WELL 3: LOCATED IN THE SE1/4 NE1/4 SECTION 23, T40S, R9E, W.M.; S26°12'00"W, 2,291' FROM THE NE CORNER SECTION 23.
- WELL 4: LOCATED IN THE NW1/4 NW1/4 SECTION 23, T40S, R9E, W.M.; S62°58'50"E, 997' FROM THE NW CORNER SECTION 23.

**LEGEND**

- 10.0 NW/4: TOTAL ACRES IRRIGATED PER 1/4 1/4 IRRIGATED LANDS THIS CLAIM OF BENEFICIAL USE 1/4 1/4 SECTION
- 6 SECTION NUMBER
- 17 18 SECTION DESIGNATION
- 10" ALL MAINS ARE BURIED PVC UNLESS OTHERWISE NOTED
- PIVOT LINE
- WHEEL LINES
- 1/4 1/4 LINES
- TAX LOT BOUNDARY
- EXISTING WELL
- PS 4 PUMP STATION NUMBER
- LOT GOVERNMENT LOT NUMBER
- TL2400 TAX LOT NUMBER



ADKINS IS PROVIDING AN UPDATED MAP TO CORRECT AN ERROR ON MAP PREVIOUSLY SUBMITTED 12/18/2012 AND NO OTHER CORRECTIONS FOR THE CLAIM ARE NEEDED.

**CLAIM OF BENEFICIAL USE & FINAL PROOF MAP**  
**DALE & JANICE FLEMING, FLEMING LIVING TRUST**  
**AND FARM CREDIT SERVICES, FLCA**  
 T39S, R9 E, W.M. PORTIONS OF SECTIONS 25, 35, AND 36  
 T39S, R10 E, W.M. PORTION OF SECTION 31  
 T40S, R09 E, W.M. PORTIONS OF SECTION 12, 14, 15 AND 23  
 T40S, R10 E, W.M. PORTIONS OF SECTION 6, 7, AND 18  
 KLAMATH COUNTY, OREGON

**ADKINS**  
 CONSULTING ENGINEERING, LLP  
 Engineers & Surveyors  
 1435 Esplanade Ave. - Klamath Falls, Oregon 97601 - (541) 884-4666 - FAX (541) 884-5335  
 Oregon - California  
 2541-01

DESIGNED BY	SCALE	SURVEYED BY	DATE	DRAWN BY	SHEET OF	CHECKED BY	FILE/FOLDER

RECEIVED  
APR 12 2018  
OWRD

COBU MAP# 1131