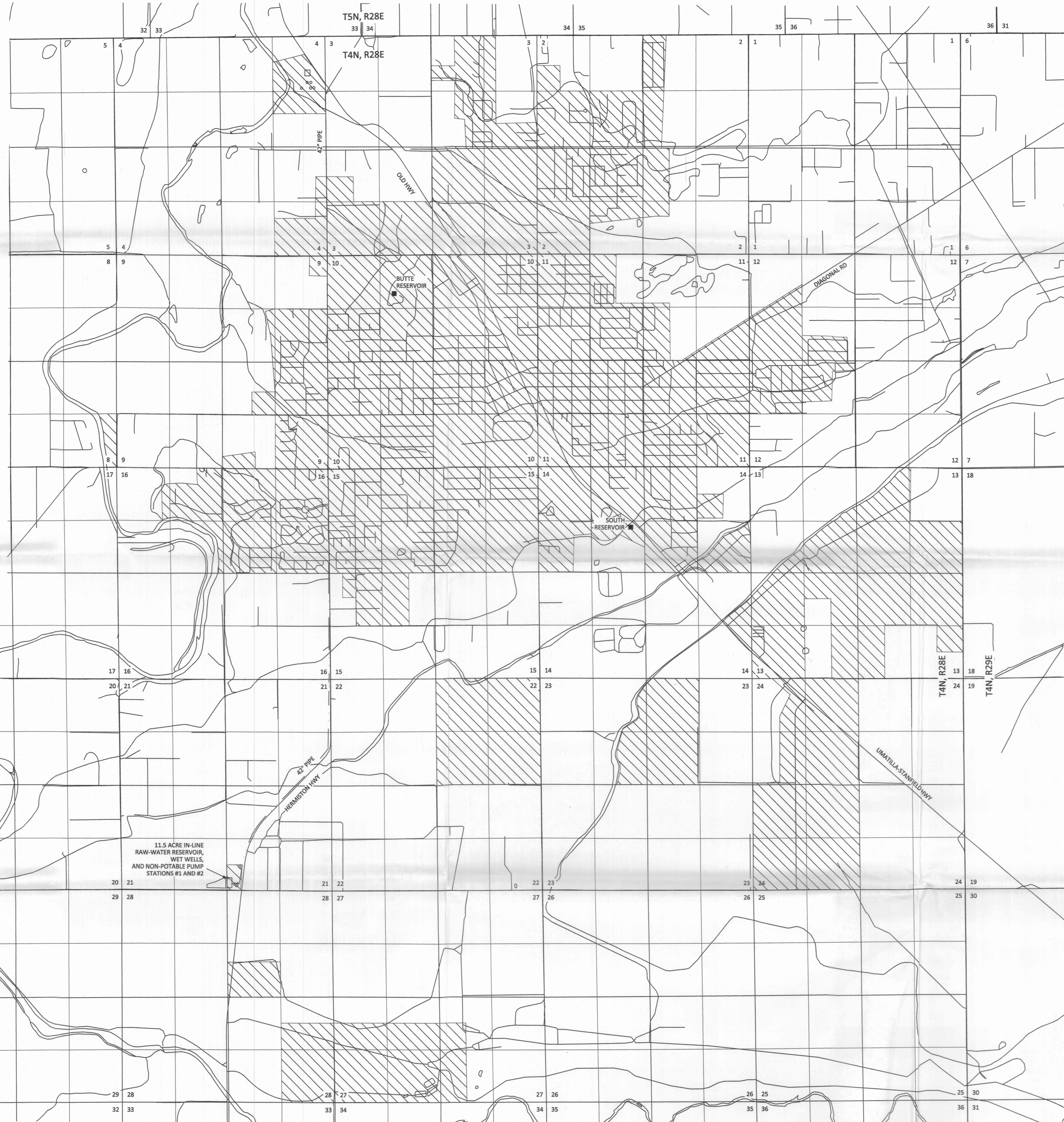
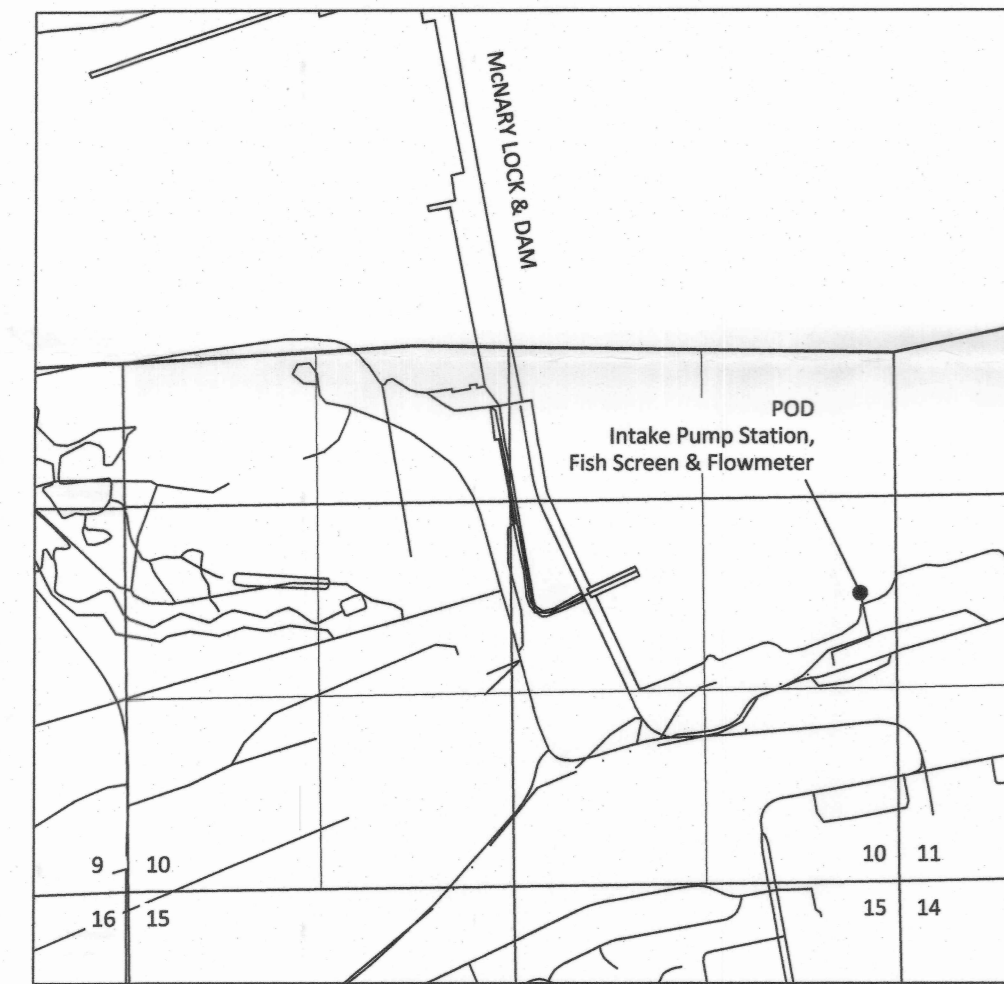
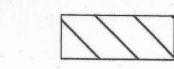




Sections 2 to 4, 8 to 16, 21 to 24, 27, 28 and 30
T4N, R28E, W.M.
&
Section 10, T5N, R28E, W.M.
Umatilla County, Oregon
Application R-58245, Permit S-49497
CLAIM OF BENEFICIAL USE MAP
Port of Umatilla

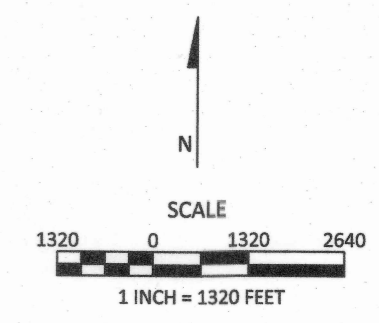


EXPLANATION

-  PLACE OF USE FOR JULY 2017 PARTIAL PERFECTION
PRIORITY DATE: JANUARY 13, 1979
-  POD (Intake Pump Station, Fish Screen & Flowmeter)
-  RESERVOIR

POD LOCATED: 1970 FT N and 280 FT W
From SE Corner of Section 10, T 5 N, R 28 E, W.M.

- NOTES:
1. Site inspection conducted July 19, 2017.
 2. 11.5 acre in-line raw-water reservoir, wet wells, and non-potable pump stations #1 and #2 details are shown on Figure 2 prepared by MWH.



SKOOKUM
WATER ASSOCIATES INC
1626 VICTORIAN WAY
EUGENE, OR 97401
(503) 319-8926

August 7, 2017
This map is not intended to provide legal
dimensions or locations of property
ownership lines.
RECEIVED BY OWFD
Figure 1
SEP 21 2017
SALEM, OR