

RENEWAL DATE 12-31-09

**Map of Claim of Beneficial Use**

T - 10120  
Place of use  
T 36 & 37 S, R 2 W, W.M.

**Legend**

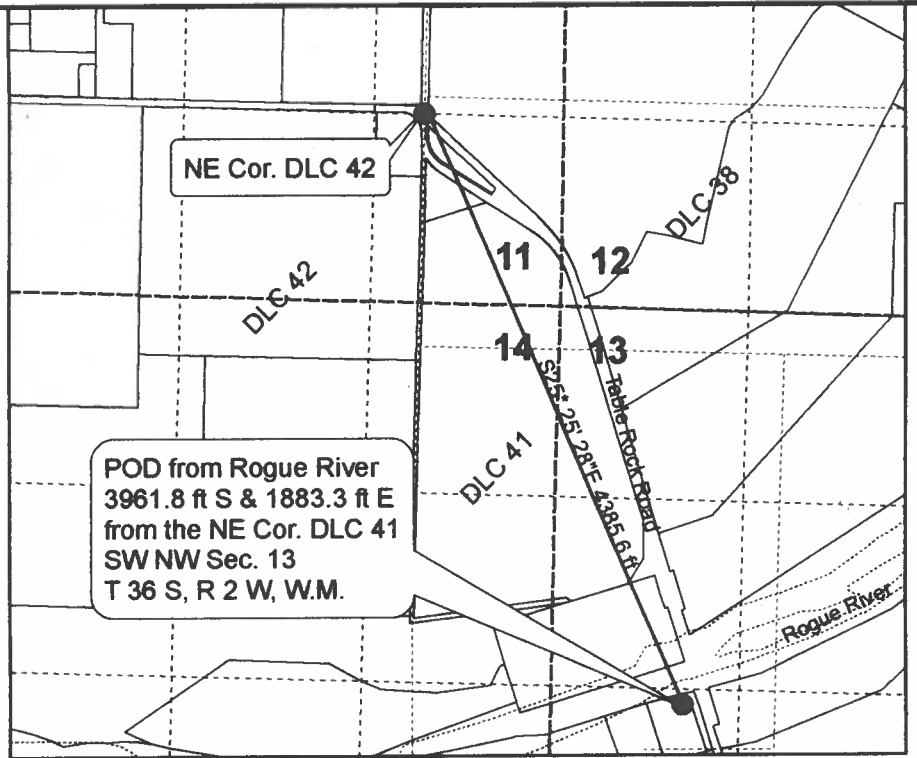
- Municipal water right coverage
- Medford Water Commission system
- City of Central Point system
- Section Line
- Quarter-quarter Line

Note: This map to be used for water right purposes only.

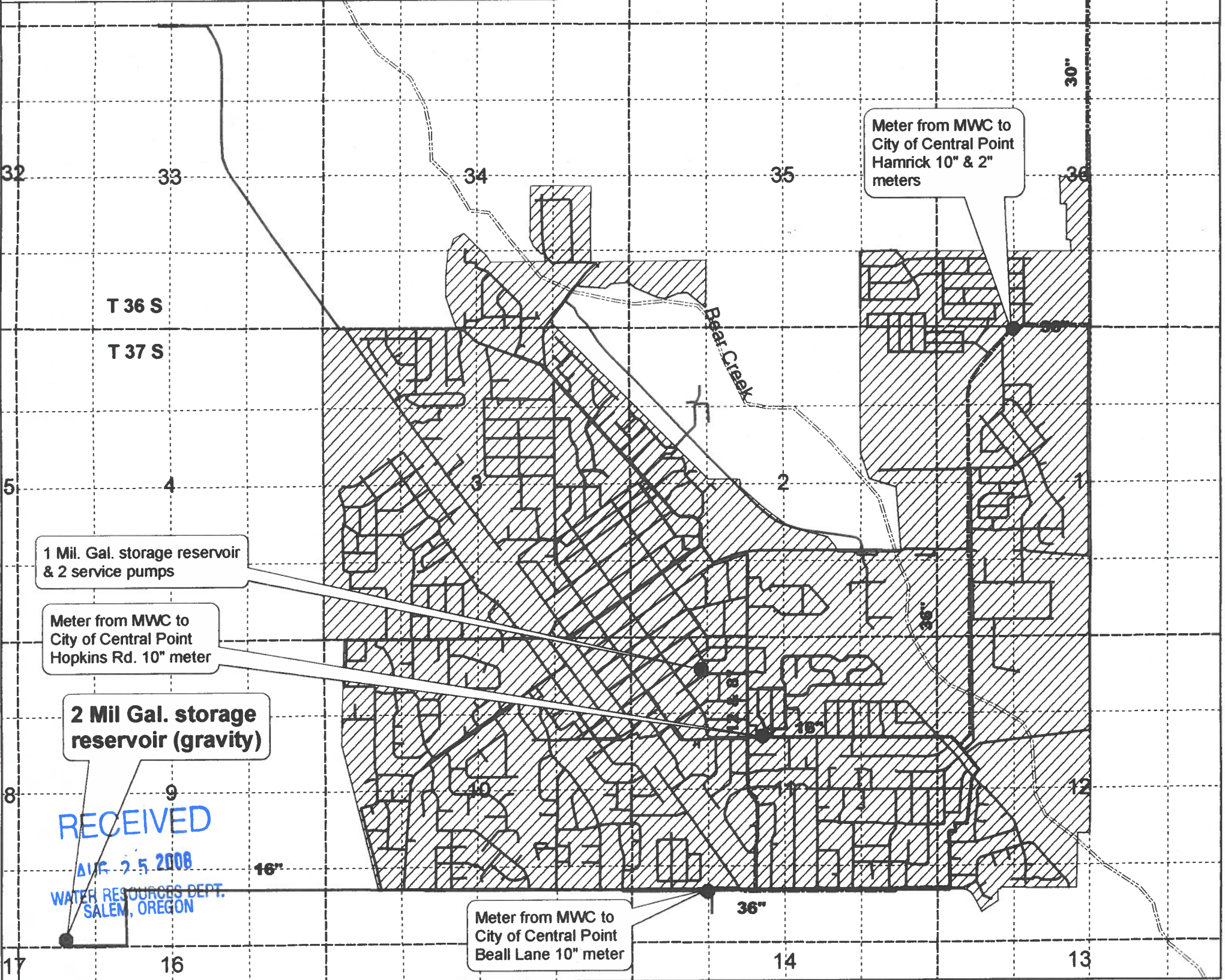
N



Scale 1" = 2000'



Detail of Additional POD  
T 36 S, R 2 W, Sec 13, W.M.  
Scale 1" = 1320



RECEIVED  
AUG 25 2008  
WATER RESOURCES DEPT.  
SALEM, OREGON