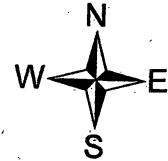


T6N, R35E, S35, WM
 W1/2 of SW1/4
 Umatilla County



400 200 0 400 Feet

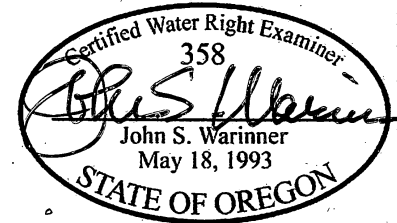
The purpose of this map is to identify the location of a water right. It is not intended to provide information regarding the location of property ownership boundary lines.

RECEIVED

JUN 26 2008

WATER RESOURCES DEPT.
 SALEM, OREGON

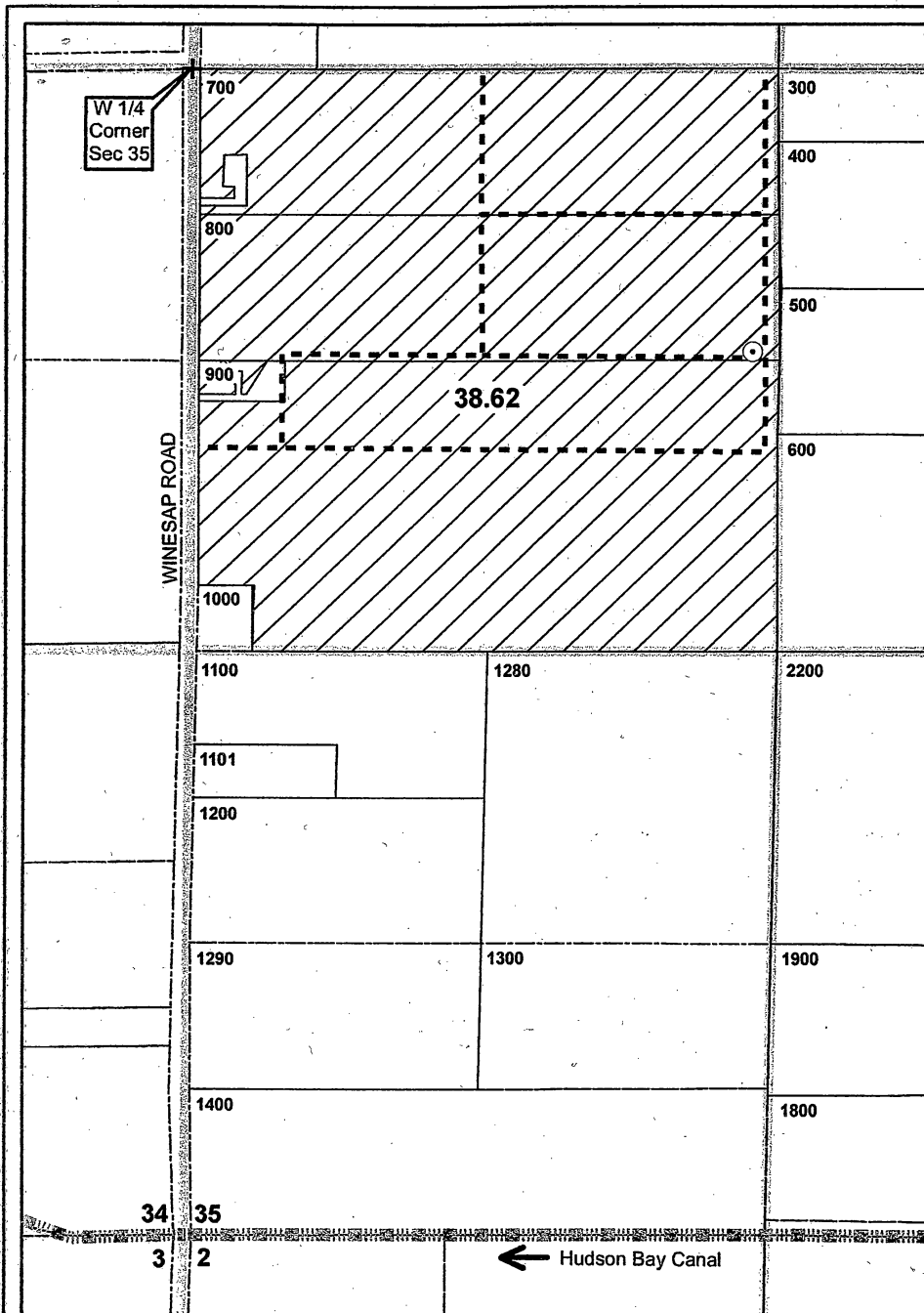
FOUNTAINHEAD
 1860 Blue Creek Road
 Walla Walla, WA 99362
 509.529.2646 phone



CLAIM OF BENEFICIAL USE MAP
 App G-16192 and Permit G-15776

in the name of
 JIM WALISER

Revised 18 JUN 2008



⊙ **Authorized POA**

Well is located in the NW/4 of SW/4, Section 35, T6N, R35E, WM, at a distance 625 feet S and 1280 feet E from W/4 Corner of Section 35. Well draws water from basalt aquifer. Well Log UMAT 55999. Flowmeter at same location (east of

----- **Conveyance**

Buried PVC mainline distributes water from well throughout authorized place of use (6-inch diameter pipe). Water applied with solid-set sprinklers (Nelson R10 and R20 in various configurations).

 **Authorized POU**

Water beneficially used for frost protection, temperature control and supplemental irrigation of 38.62 acres of fruit orchards, in NW/4 of SW/4, Section 35, T6N, R35E, WM.