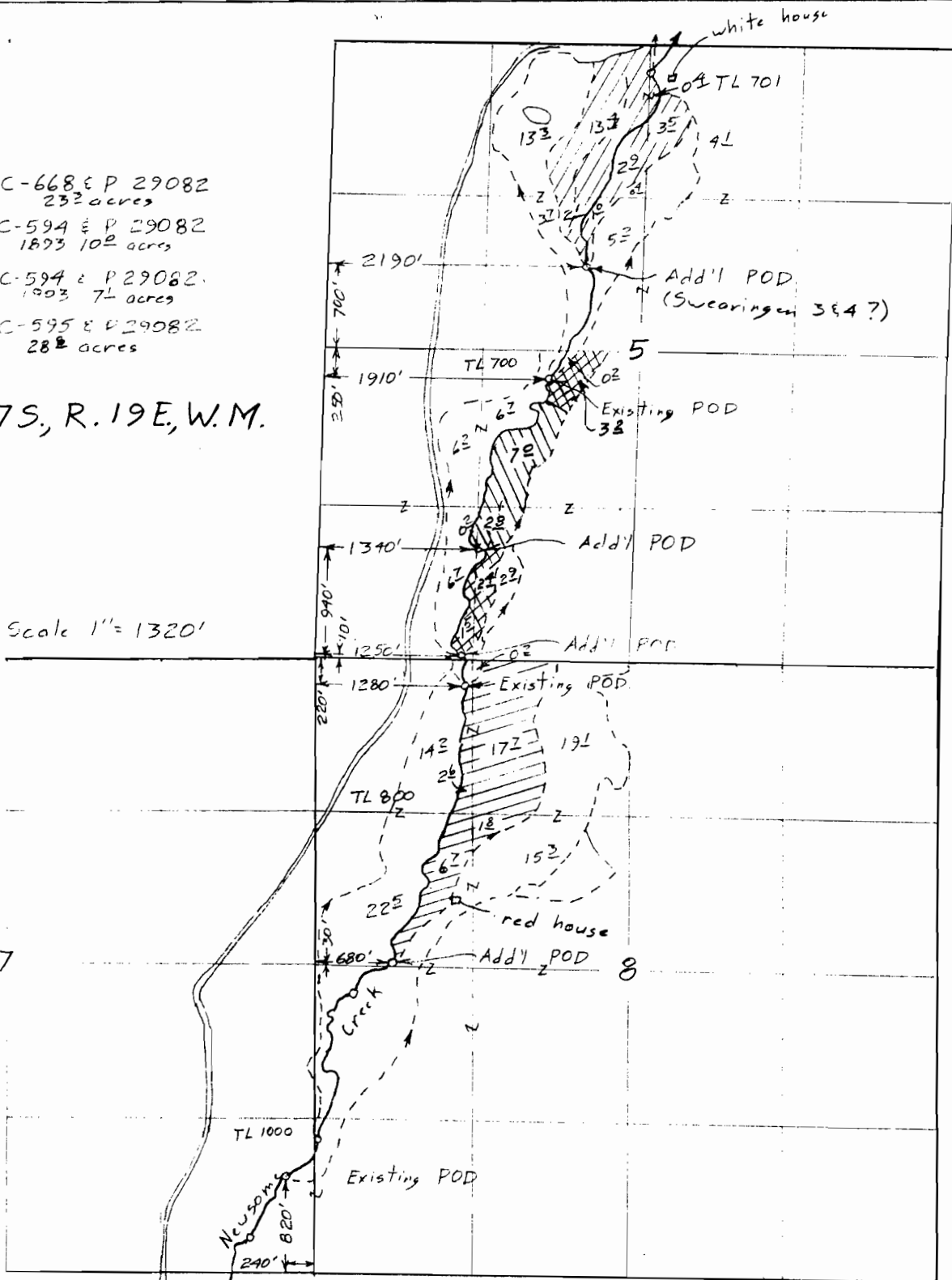


- ⊗ C-668 & P 29082
232 acres
- ⊗ C-594 & P 29082
1873 102 acres
- ⊗ C-594 & P 29082
1903 74 acres
- ⊗ C-595 & P 29082
282 acres

T.17S, R.19E, W.M.

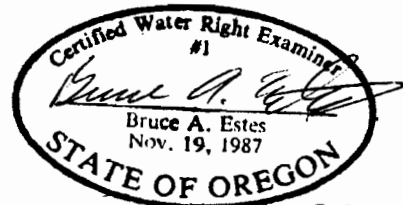
Scale 1" = 1320'



RECEIVED
JUL 17 2006

T-9216

Application Map
for
ASPEN VALLEY RANCH

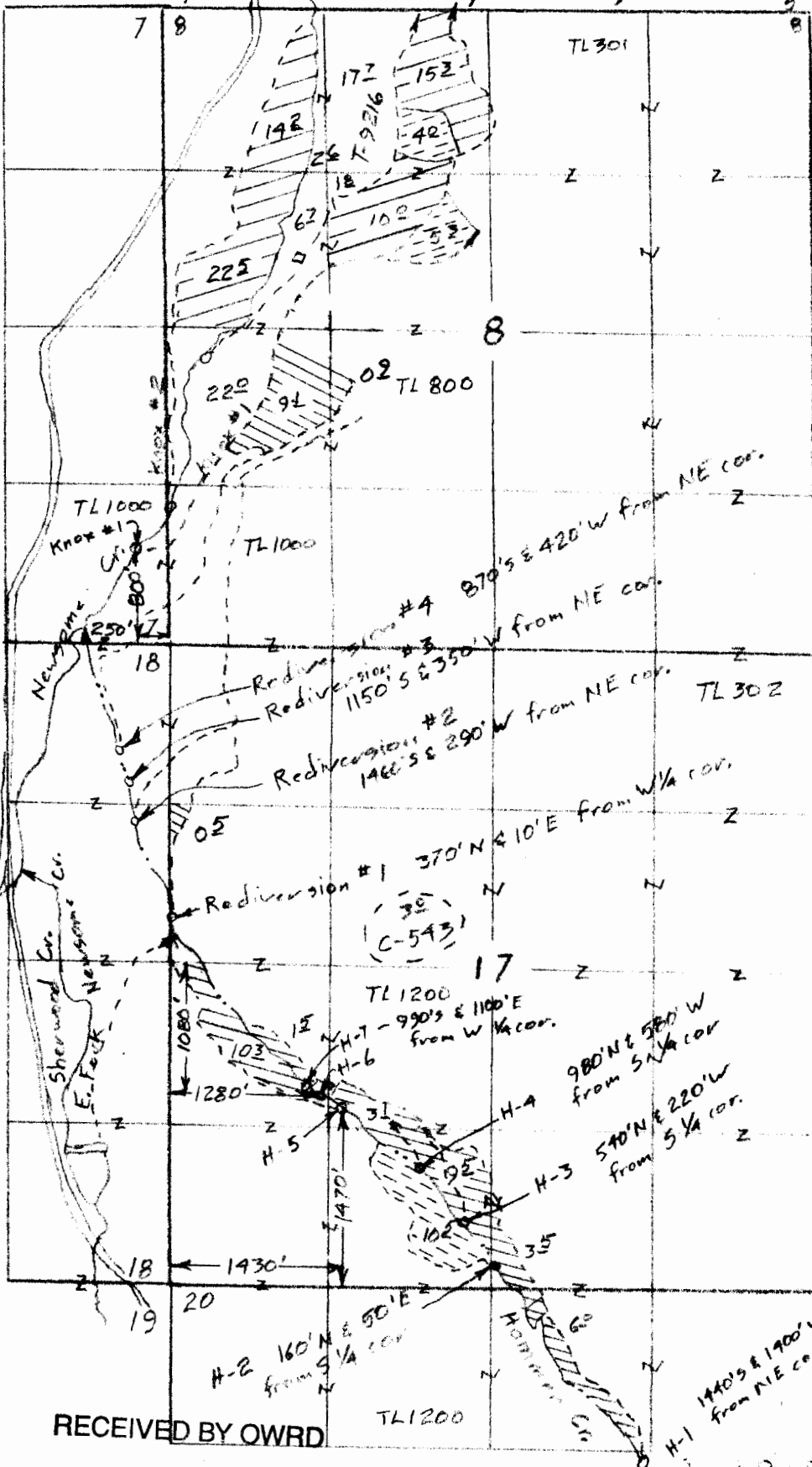


Renewal Dec 31, 2007
Sheet 2 of 2

This map is for the purpose of locating a water right only and has no intent to provide legal dimensions or the location of property lines.

ESTES SURVEYS, LLC
 PO Box 17519 60382 Arnold Rd
 Salem, OR 97305-7519 Bend, OR 97702
 (503) 585-7593 (541) 382-7391

T. 17S., R. 19E., W. M.



Scale 1" = 1320'
(4" = 1 mile)

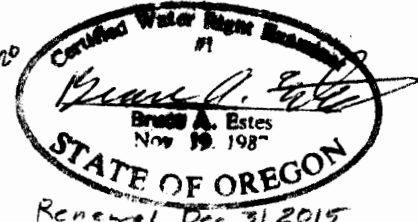
C-81327 (1879)

- ⊖ From: 93 acres
- ⊖ Remain in place: 62[±]
- Remain in place: 10[±] (1908)
in Section 24, T17S, R19E

C-543 (1890)

- ⊖ From: 105 acres
- ⊖ To: 105 acres
- ⊖ Remain in place
362 acres

Transfer Application
Map for
Aspen Valley Ranch



Renewal Dec 31, 2015
Sheet 2 of 3

RECEIVED BY OWRD

OCT 07 2015

SALEM, OR

This map is for the purpose of locating a water right only and has no intent to provide legal dimensions or the location of property lines.

ESTES SURVEYS, LLC

PO Box 47649
Salem, OR 97308-7519
(503) 838-7385

60382 Arnold Rd
Bend, OR 97702
(541) 382-7391