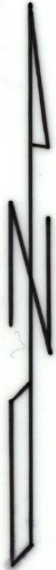


RECEIVED

SEP 29 1998

WATER RESOURCES DEPT.  
SALEM, OREGON



NW 1/4, NE 1/4

NE 1/4, NE 1/4

SW 1/4, NE 1/4

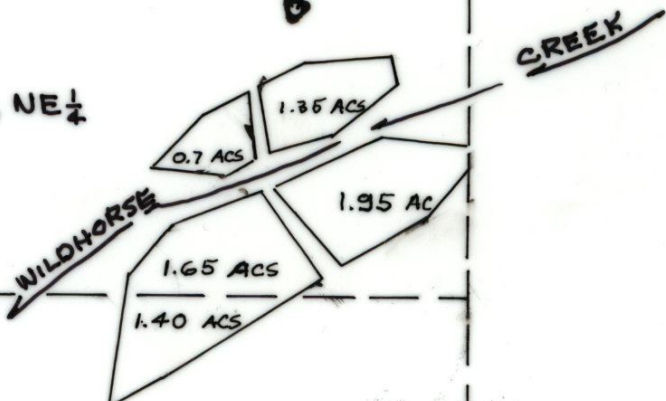
SE 1/4, NE 1/4

36

31

6

FND  
BRASS  
CAP



**K** **KRUMBEIN ENGINEERING LTD.**  
ENGINEERS — SURVEYORS — PLANNERS  
361 S.E. Second Pendleton, Oregon

Scale  
1" = 400'  
Date  
7-30-98

Dwn. By  
DHK  
Ckd. By

Draw. No.  
9854A  
Job No.  
9223

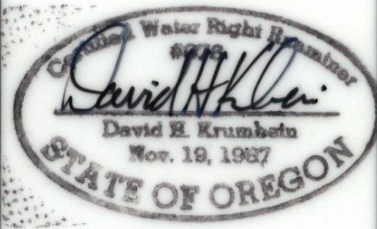
Revision 1  
Revision 2

FINAL PROOF MAP

LEONARD STANHOPE

NE 1/4, NE 1/4 & SE 1/4, NE 1/4

SECTION 1, T. 2 N., R. 32E.W.M.  
UMATILLA COUNTY



PERMIT G-11798

RENEWS 6/30/99