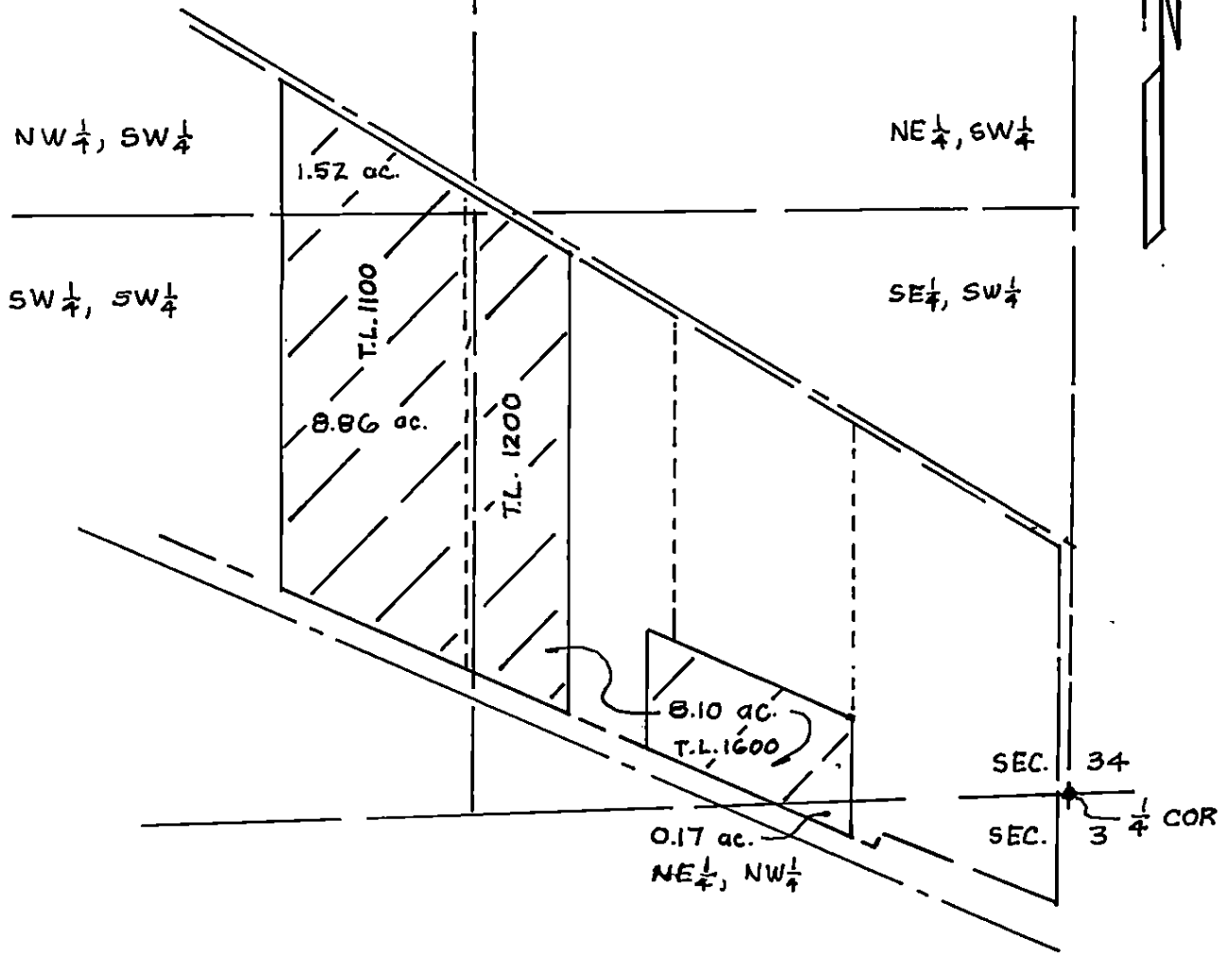


RECEIVED

NOV 29 2002

WATER RESOURCES DEPT.
SALEM, OREGON



K KRUMBEIN ENGINEERING LTD. ENGINEERS — SURVEYORS — PLANNERS 361 S.E. Second Pendleton, Oregon	Scale 1"=400'	Drn. By DHK	Drng. No. 0238A	Revision 1
	Date 21 NOV 02	Ckd. By	Job No. 9224	Revision 2

FINAL PROOF SURVEY
MILLAR
 NW 1/4 & SW 1/4 & SE 1/4, OF SW 1/4
 SECTION 34 AND THE
 NE 1/4, NW 1/4 OF SECTION 3
 T. 54 N., R. 35 E. W. M.

RENEWS 6/30/03

APPLICATION
 G-13223
 PERMIT G-12111