

Section 8, Township 35 South, Range 7 West, W.M.

BOOK 3

SECTION 8 T35S. R.7W. W.M.

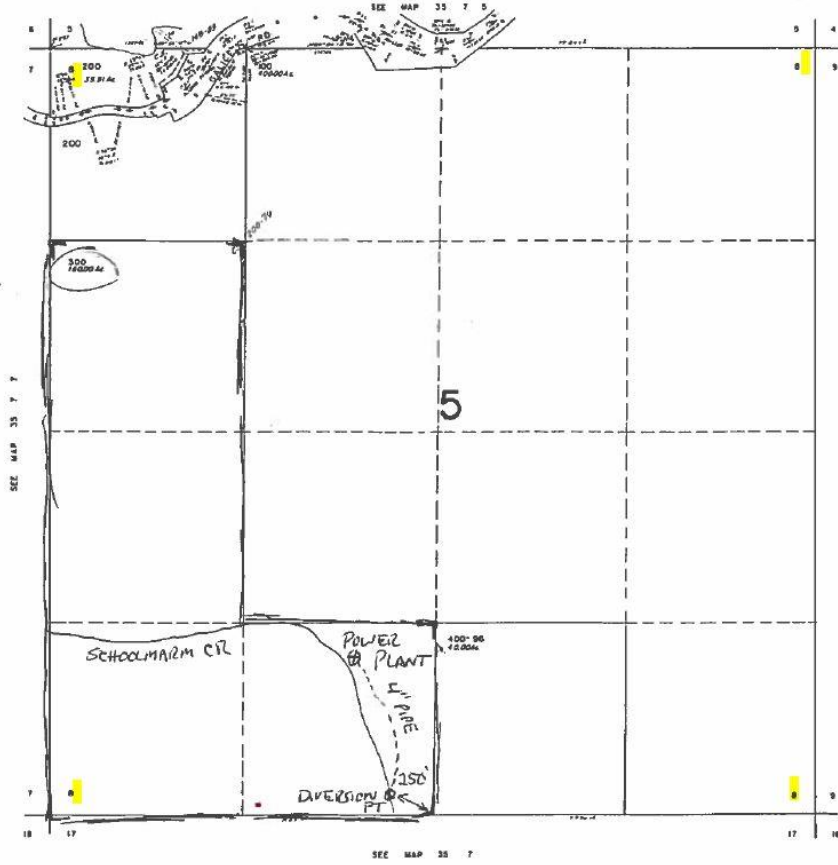
35 7 8

This map was prepared for assessment purposes only.

JOSEPHINE COUNTY  
SCALE: 1"=400'

EXHIBIT B  
&  
EXHIBIT C

- NO PROPERTY LINES  
WITHIN 300' OF  
POWERHOUSE -



RECEIVED BY OWRD

NOV 17 2017

SALEM, OR

35 7 8