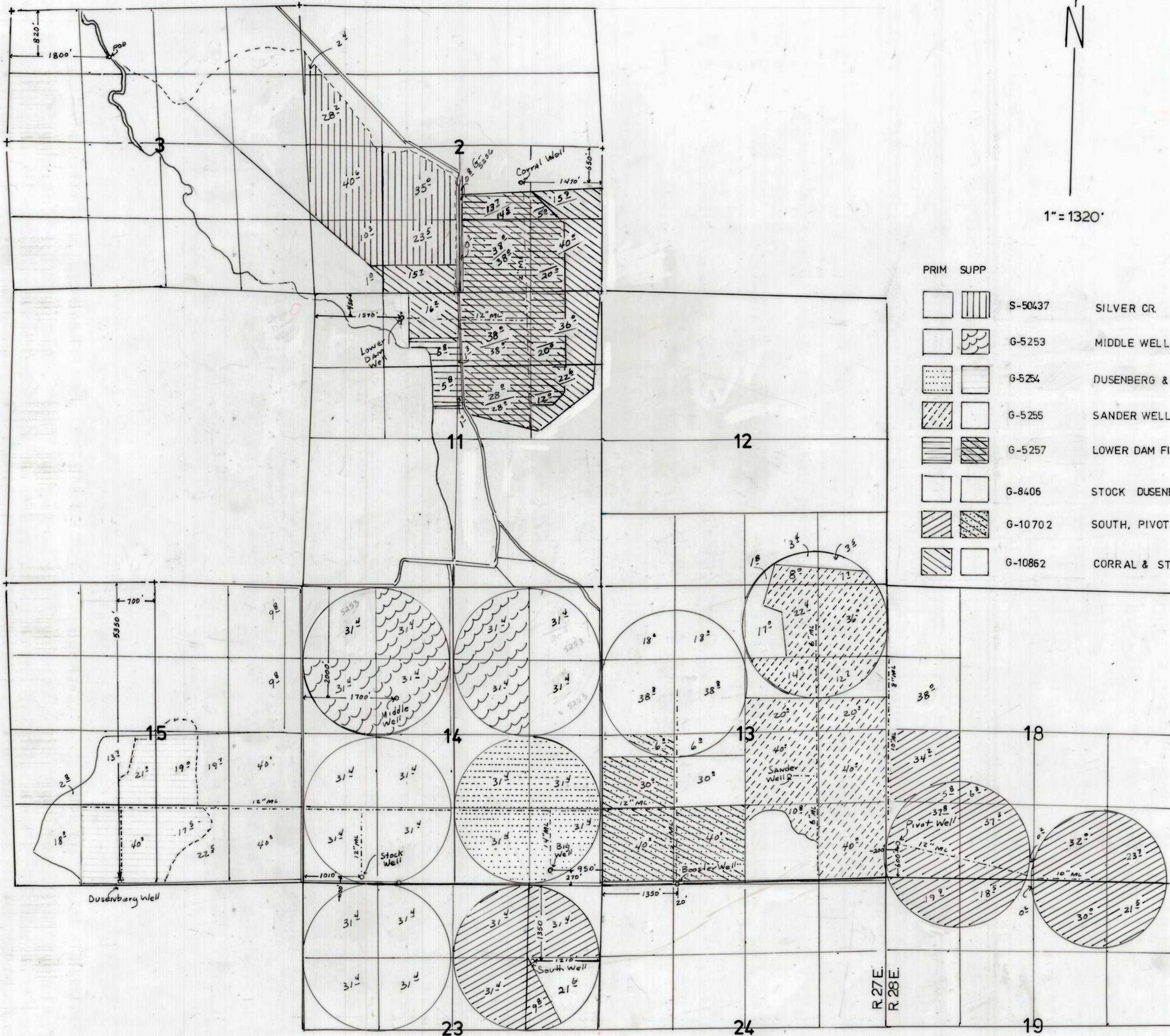


T. 24 S., R. 27 & 28 E., W.M.



RECEIVED
 DEC 21 2000
 WATER RESOURCES DEPT.
 SALEM, OREGON

1" = 1320'

PRIM	SUPP	WELL ID	WELL NAME
[Pattern]	[Pattern]	S-50437	SILVER CR
[Pattern]	[Pattern]	G-5253	MIDDLE WELL
[Pattern]	[Pattern]	G-5254	DUSENBERG & BIG
[Pattern]	[Pattern]	G-5255	SANDER WELL
[Pattern]	[Pattern]	G-5257	LOWER DAM FIELD WELL
[Pattern]	[Pattern]	G-8406	STOCK DUSENBERG & BIG WELLS
[Pattern]	[Pattern]	G-10702	SOUTH, PIVOT & BOOSTER
[Pattern]	[Pattern]	G-10862	CORRAL & STOCK WELLS

FINAL PROOF SURVEY
 UNDER

APPLICATION NO. S-65353 PERMIT NO. S-50437
 G 6726 G 5253
 G 6727 G 5254
 G 6728 G 5255
 G 6730 G 5257
 G 8947 G 8406
 G 11037 G 10702
 G 11036 G 10862

IN THE NAME OF
 DENNY LAND AND CATTLE COMPANY LLC
 BY J. MILLER
 SURVEYED FEB. 25, 2000

EPI 5V-145
 NAPP 4/025-1213-56
 NAPP 4/025-1211-102R, 101R, 102R, 103R.
 4/025-279-142D, 179-132B, 132A,
 J.Miller 12-15-2000

COBU MAP # 0086

9800