

**CLAIM OF BENEFICIAL  
USE MAP**

APP. S-74072, PER. S-51615  
FOR: PUMPKIN RIDGE JOINT  
VENTURE

**LEGEND**

- POINT OF DIVERSION
- Ⓟ PUMPHOUSE & METER
- MAIN IRRIGATION PIPES
- PROPERTY BOUNDARY LINE
- - - 1/16TH SECTION LINE
- DLC LINE
- ▨ PLACE OF USE

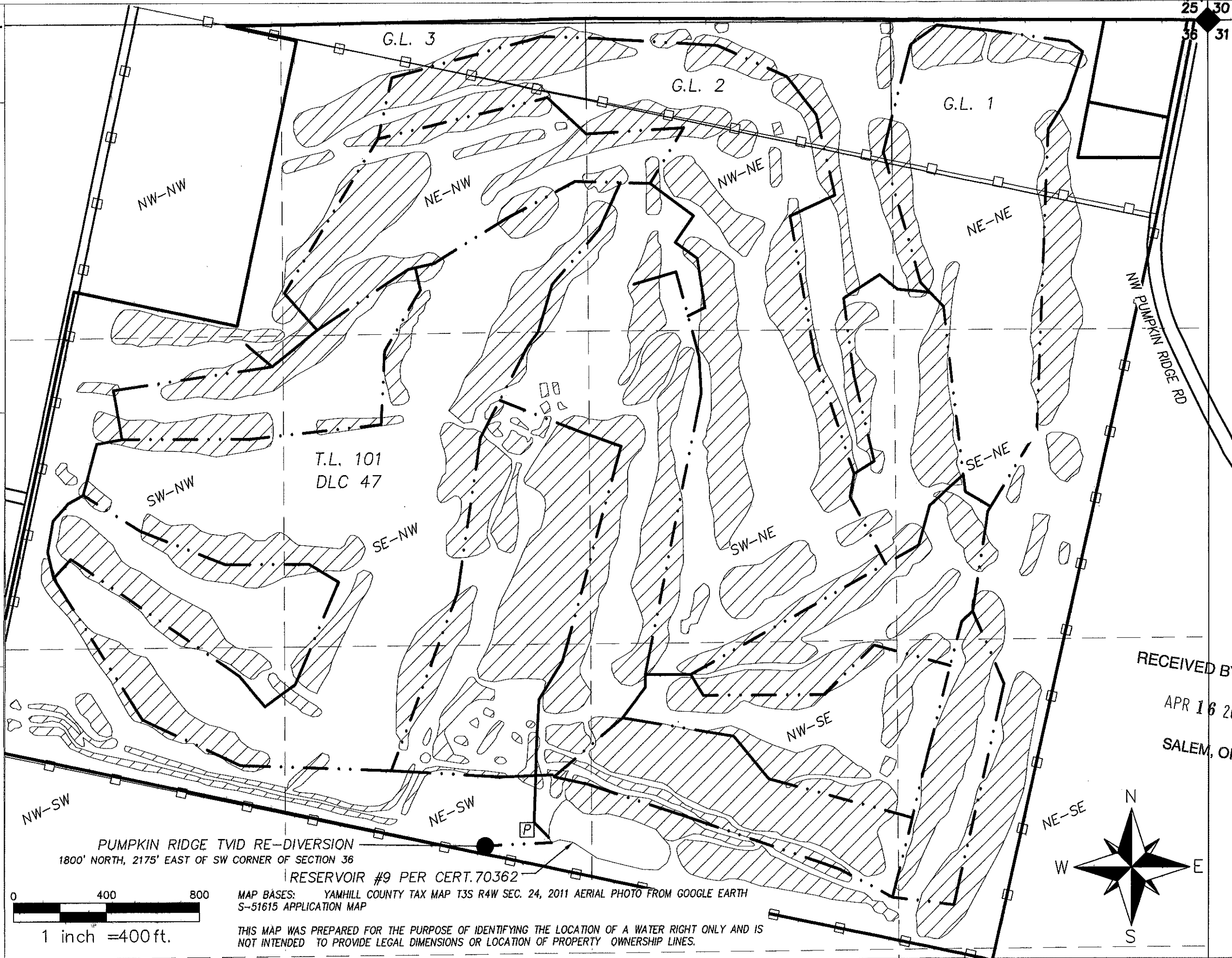
**POU SUMMARY**

T2N, R3W, SECTION 36

NE-NE	7.3 ACRES
NW-NE	16.5 ACRES
SW-NE	19.6 ACRES
SE-NE	8.3 ACRES
NE-NW	19.8 ACRES
NW-NW	1.3 ACRES
SW-NW	12.6 ACRES
SE-NW	17.6 ACRES
NE-SW	7.1 ACRES
NW-SW	5.3 ACRES
NE-SE	8.8 ACRES
NW-SE	20.8 ACRES



PROJECT: 307-2-058A\_COBU  
DRAWN BY: DYLAN HITNER  
CHECKED BY: ERIC URSTADT  
DATE: MARCH 15, 2013



PUMPKIN RIDGE TVID RE-DIVERSION  
1800' NORTH, 2175' EAST OF SW CORNER OF SECTION 36  
RESERVOIR #9 PER CERT. 70362  
MAP BASES: YAMHILL COUNTY TAX MAP T3S R4W SEC. 24, 2011 AERIAL PHOTO FROM GOOGLE EARTH  
S-51615 APPLICATION MAP

THIS MAP WAS PREPARED FOR THE PURPOSE OF IDENTIFYING THE LOCATION OF A WATER RIGHT ONLY AND IS NOT INTENDED TO PROVIDE LEGAL DIMENSIONS OR LOCATION OF PROPERTY OWNERSHIP LINES.

RECEIVED BY OWRD  
APR 16 2015  
SALEM, OR

COBU MAP # 902

25 30  
36 31