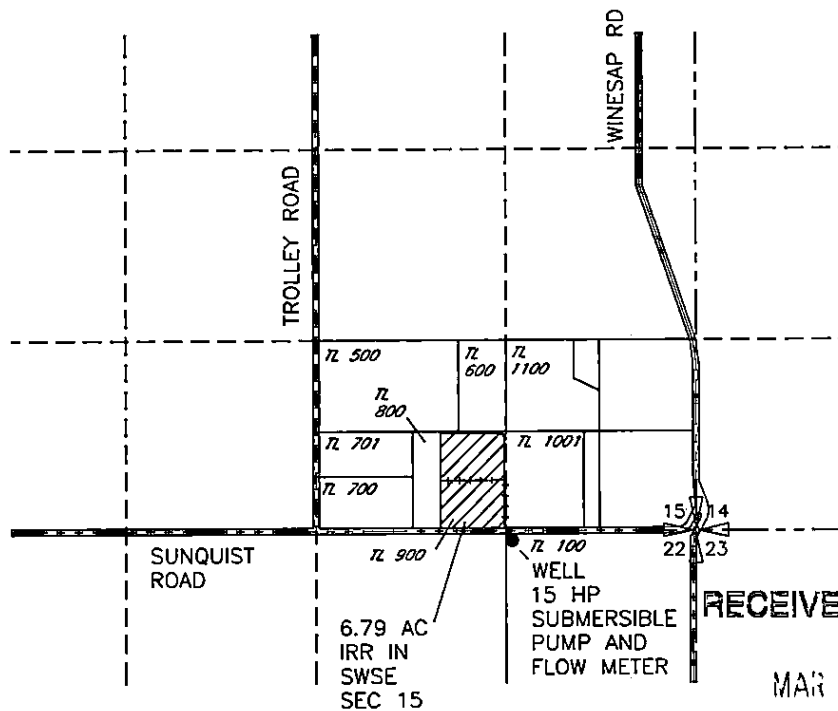
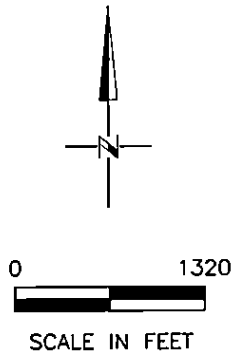


# CLAIM OF BENEFICIAL USE MAP FOR APPLICATION G-14987, PERMIT G-13809 IN THE NAME OF JIM WALISER ORCHARDS, INC. T6N, R35E, W.M., UMATILLA COUNTY



RECEIVED BY OW&D

MAR 02 2015

SALEM, OR

## LEGEND



AREA OF SUPP IRRIGATION  
AND TEMP CONTROL

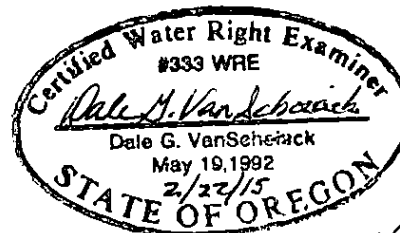


BURIED PIPELINE

POINT OF APPROPRIATION



WELL  
LOCATED 30'S AND 1290'W FROM  
THE NE CORNER OF SEC 22



*Renewal: 6/30/16*

NOTE:  
THE PURPOSE OF THIS MAP IS TO IDENTIFY THE APPROXIMATE LOCATION OF THE WATER RIGHT.  
IT IS NOT INTENDED TO PROVIDE INFORMATION RELATIVE TO THE LOCATION OF PROPERTY LINES.

THE PIPE DISTRIBUTION SYSTEM IS BURIED PIPE. LOCATIONS AND SIZES ARE APPROXIMATE. THEY  
ARE BASED ON FARM MAPS, FIELD OBSERVATIONS AND DESCRIPTIONS PROVIDED BY FARM PERSONNEL.