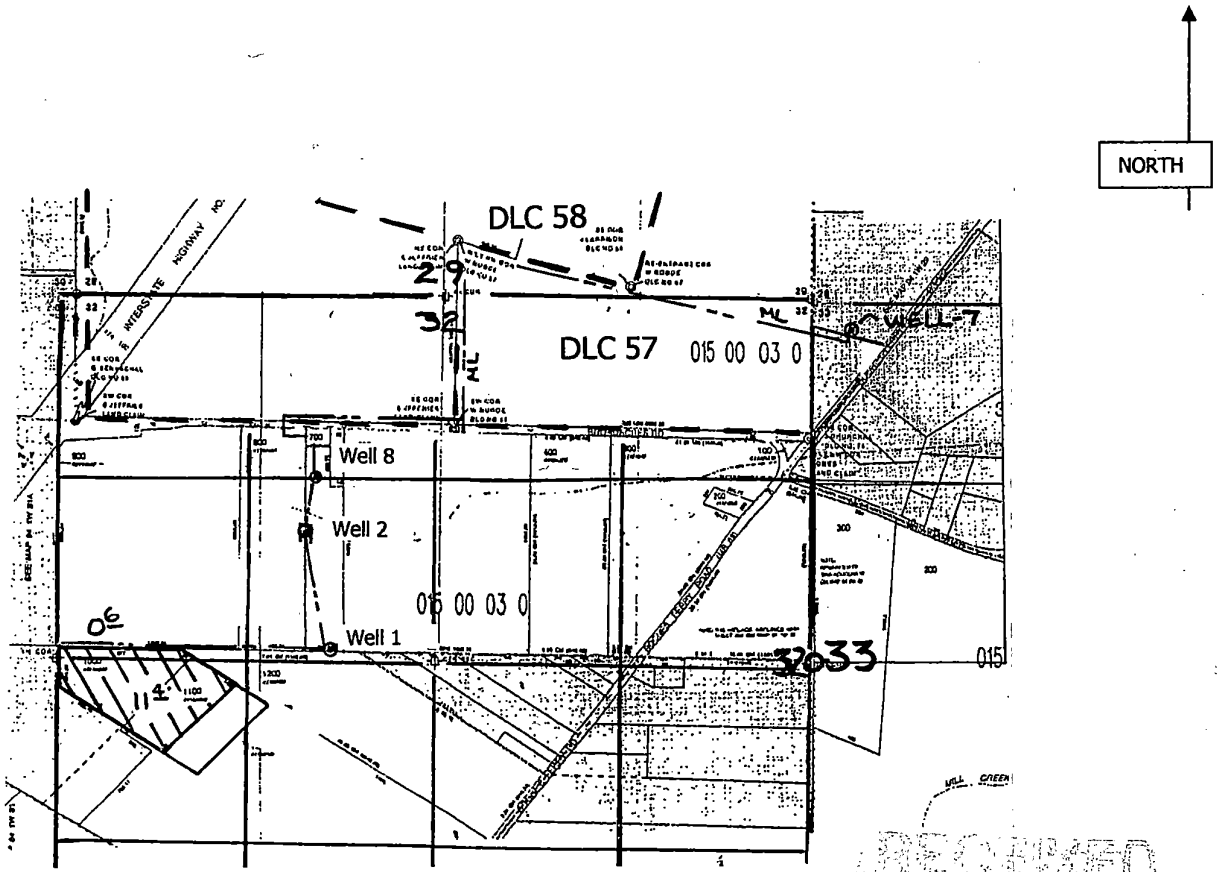


FINAL PROOF MAP
IN THE NAME OF Thomas H. DeArmond
TRANSFER T-9890
T 4 S, R 1 W, W.M. Section 32 & 33



RECORDED

MAY 11 2015

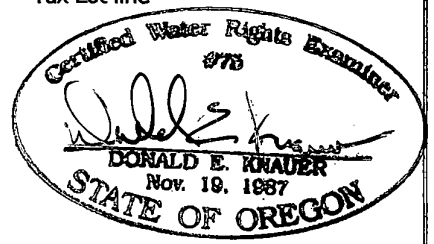
WATER RESOURCES DEPT
 SALEM, OREGON

- Well # 1: 60' N and 1950' E from the W ¼ corner sec. 32
- Well #2: 980' N and 1650' E from the W ¼ corner sec. 32
- Well # 7: 770' N and 250' E from the NE corner DLC 56
- Well #8: 1350' N and 1860' E from the W ¼ corner sec. 32

- Section Line —————
- DLC line ————
- ¼ ¼ line ————
- Pipe line - - - - -
- Tax Lot line ————

Scale 1" = 1320'

This map is not intended to provide legal dimensions or locations of property ownership lines .



RENEWAL DATE: 6/30/2015