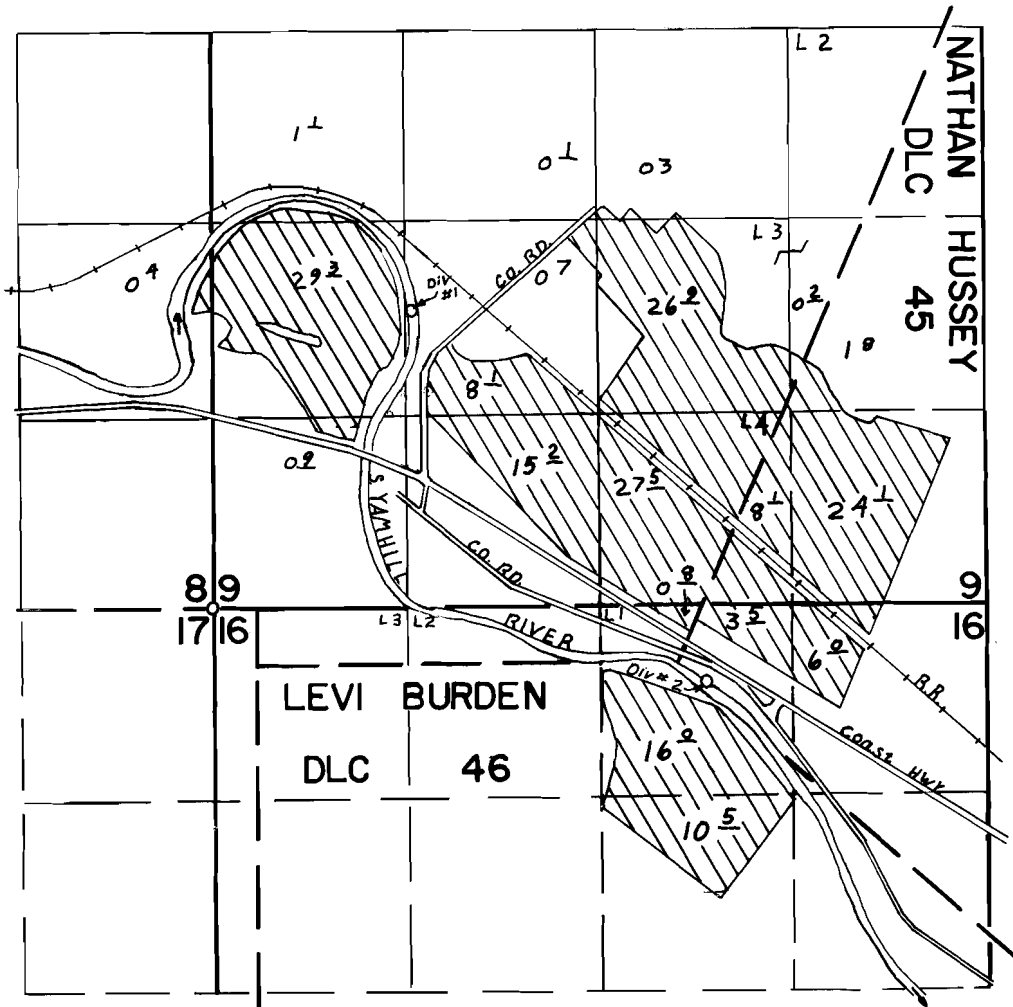


T.6S., R.7W., W.M.



DIV #1 2010N & 1380E FROM SW COR SEC 9
 DIV #2 510S & 3425E FROM SW COR SEC 9

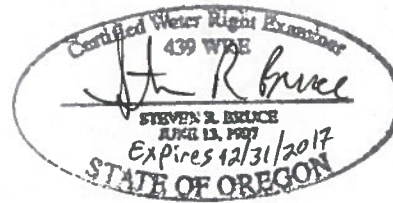
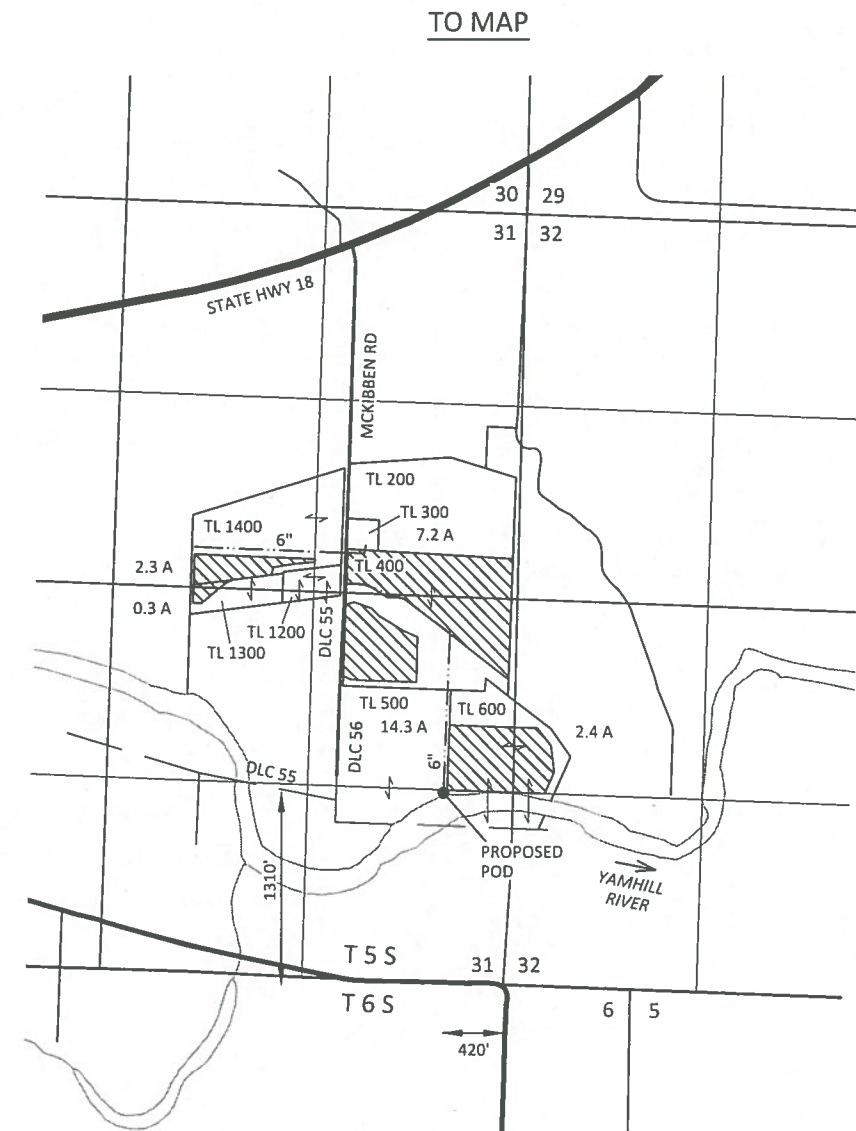
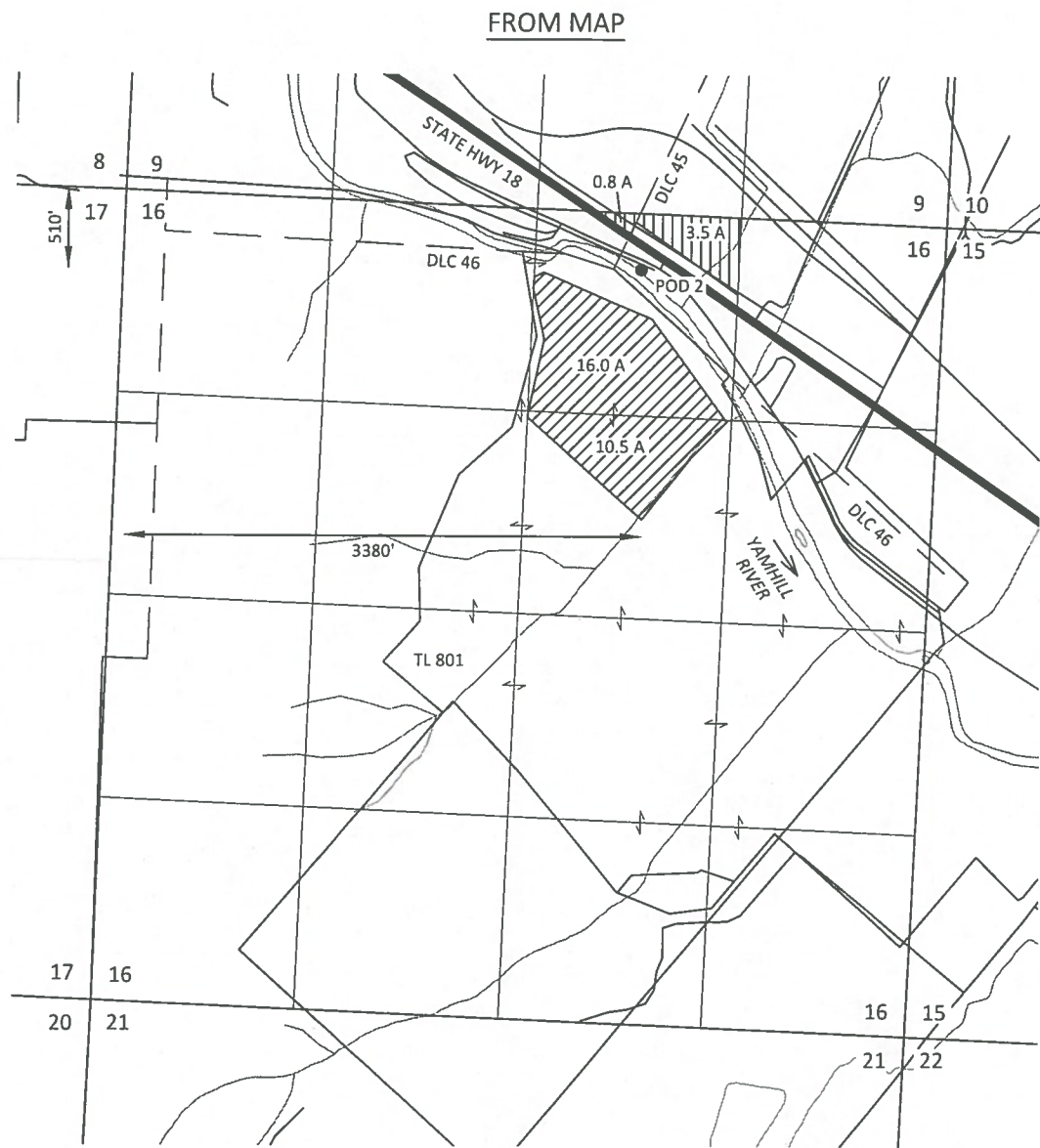
FINAL PROOF SURVEY UNDER

Application No. 48363 Permit No. 36310
 IN NAME OF

WESLEY E. SHENK

Surveyed AUG 10 1976, by C.R. KING

TRANSFER APPLICATION MAP
 Certificate 45563
 Section 16, T6S, R7W, W.M., Polk County and
 Sections 31 & 32, T5S, R5W, W.M., Yamhill County
 Christensen Farms



RECEIVED
 JAN 19 2016
 WATER RESOURCES DEPT
 SALEM, OREGON

EXPLANATION

FROM LANDS

CERTIFICATE 45563 (26.5 A)
 IRRIGATION
 PRIORITY: 6/25/1971

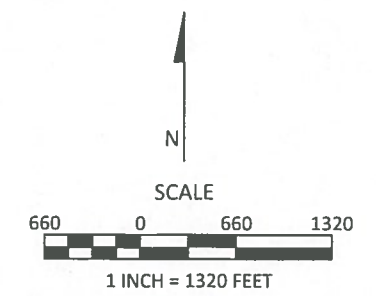
POINT OF DIVERSION (POD)
 PIPELINE (APPROX.)

TO LANDS

CERTIFICATE 45563 (26.5 A)
 IRRIGATION
 PRIORITY: 6/25/1971

REMAINING RIGHTS (Not All Acres Shown)

CERTIFICATE 45563 (155.0 A)
 IRRIGATION
 PRIORITY: 6/25/1971



January 4, 2016

This map is not intended to provide legal
 dimensions or locations of property
 ownership lines

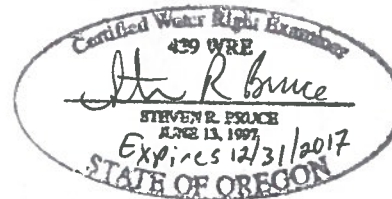
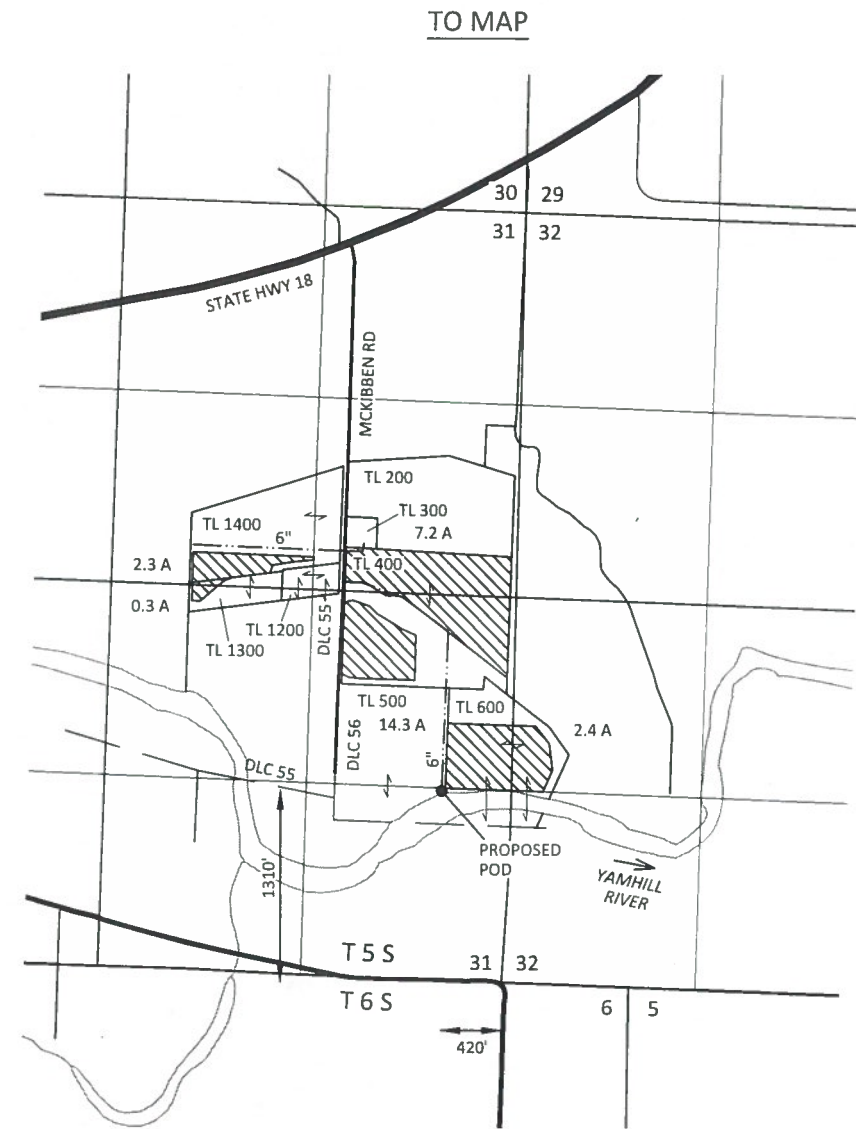
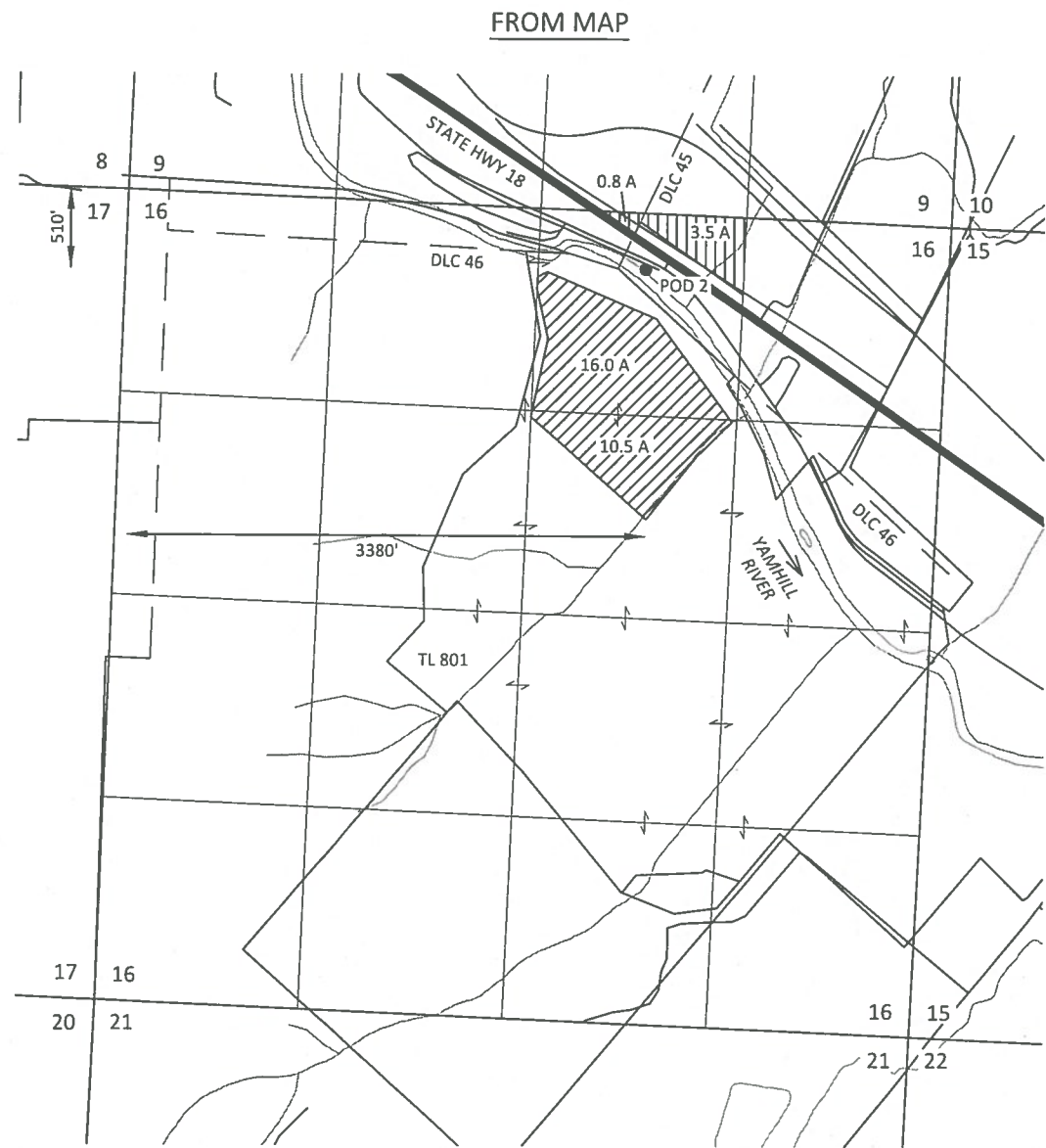
FIGURE 1

SKOOKUM
 WATER ASSOCIATES INC

P.O. BOX 80174
 PORTLAND, OR 97280
 (503) 319-8926

T 12250

TRANSFER APPLICATION MAP
 Certificate 45563
 Section 16, T6S, R7W, W.M., Polk County and
 Sections 31 & 32, T5S, R5W, W.M., Yamhill County
 Christensen Farms



RECEIVED

JAN 19 2016

WATER RESOURCES DEPT
SALEM, OREGON

EXPLANATION

FROM LANDS

CERTIFICATE 45563 (26.5 A)
IRRIGATION
PRIORITY: 6/25/1971

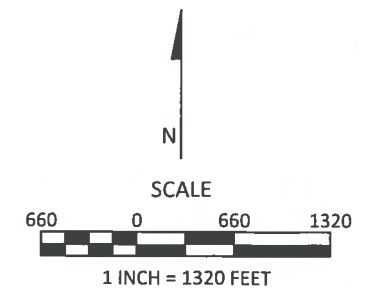
POINT OF DIVERSION (POD)
 PIPELINE (APPROX.)

TO LANDS

CERTIFICATE 45563 (26.5 A)
IRRIGATION
PRIORITY: 6/25/1971

REMAINING RIGHTS (Not All Acres Shown)

CERTIFICATE 45563 (155.0 A)
IRRIGATION
PRIORITY: 6/25/1971



January 4, 2016

This map is not intended to provide legal dimensions or locations of property ownership lines

FIGURE 1

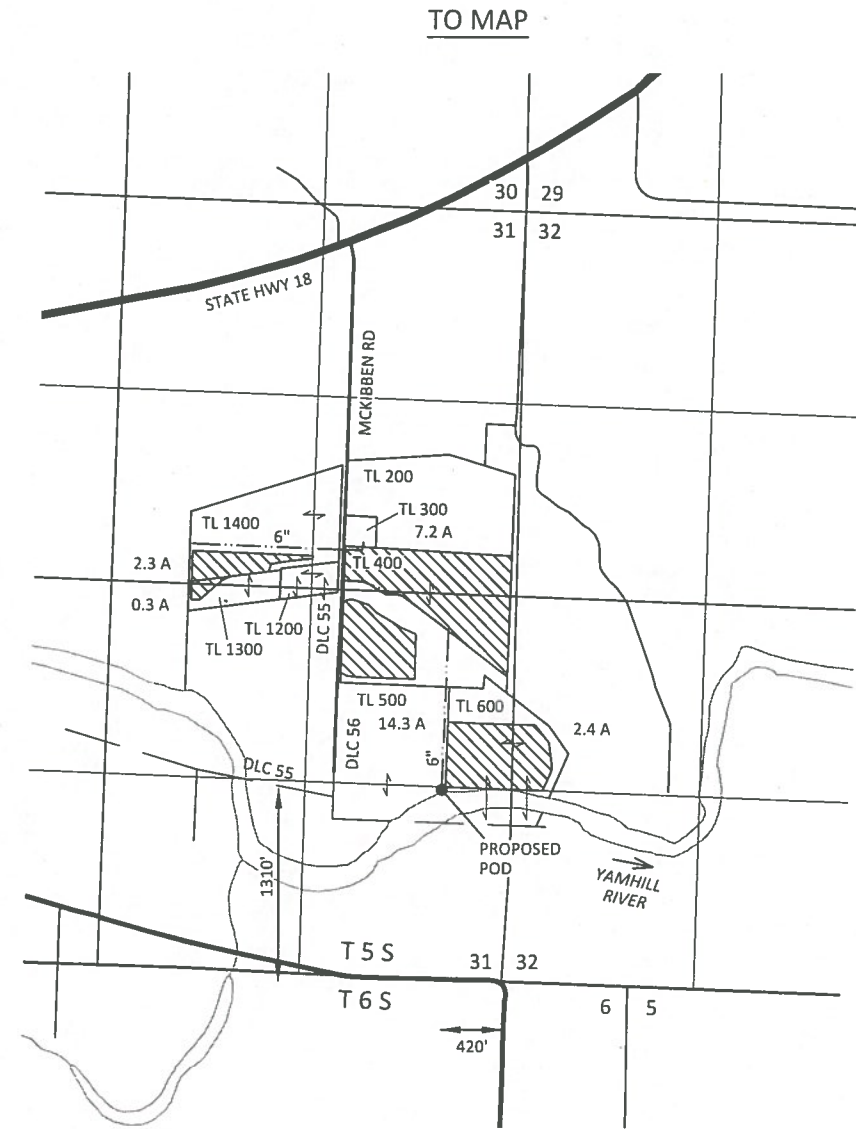
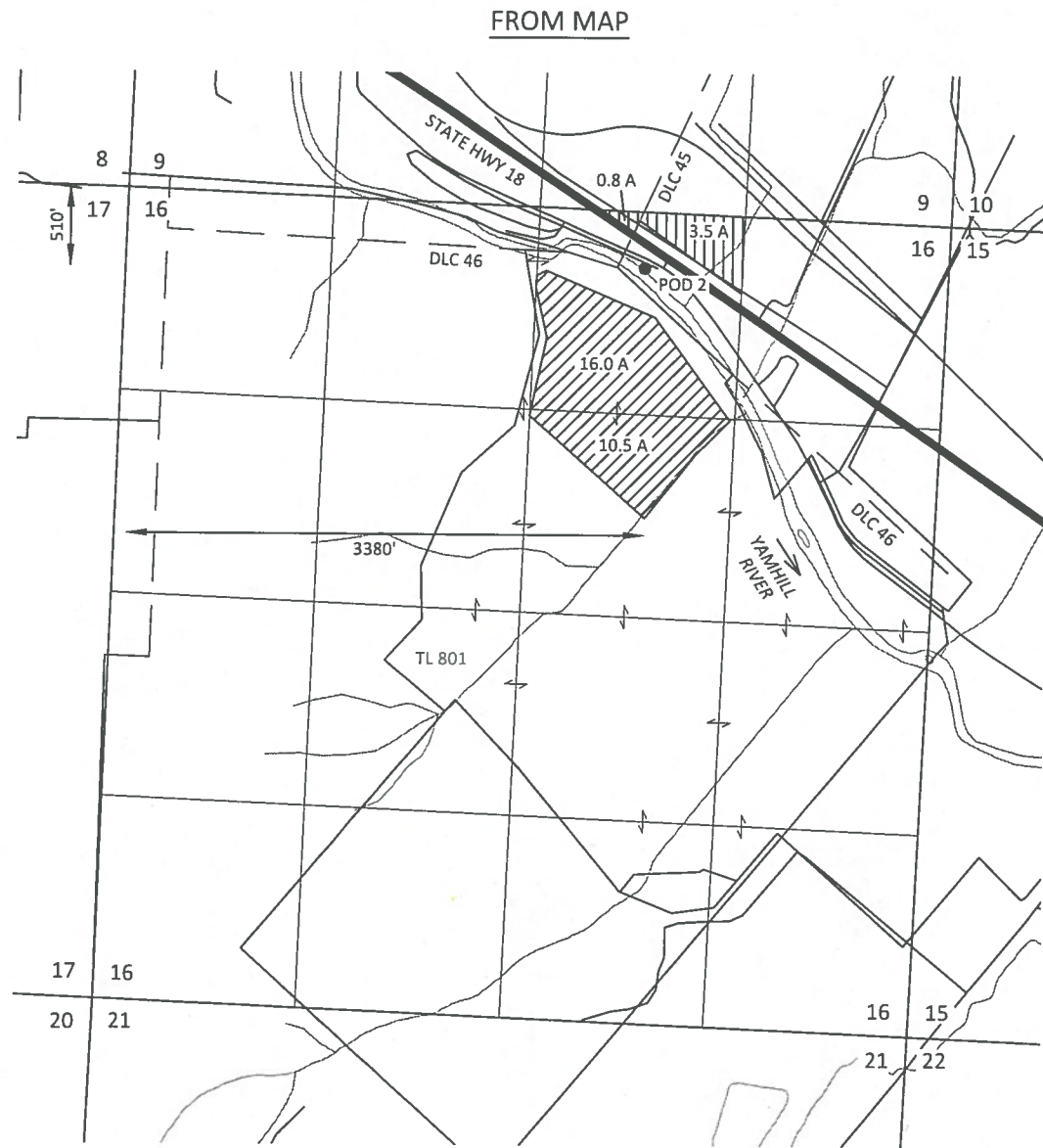
SKOOKUM

WATER ASSOCIATES INC

P.O. BOX 80174
 PORTLAND, OR 97280
 (503) 319-8926

T 12250

TRANSFER APPLICATION MAP
 Certificate 45563
 Section 16, T6S, R7W, W.M., Polk County and
 Sections 31 & 32, T5S, R5W, W.M., Yamhill County
 Christensen Farms



RECEIVED

JAN 19 2016

WATER RESOURCES DEPT
SALEM, OREGON

EXPLANATION

FROM LANDS

CERTIFICATE 45563 (26.5 A)
IRRIGATION
PRIORITY: 6/25/1971

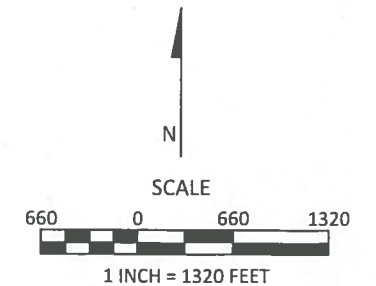
POINT OF DIVERSION (POD)
 PIPELINE (APPROX.)

TO LANDS

CERTIFICATE 45563 (26.5 A)
IRRIGATION
PRIORITY: 6/25/1971

REMAINING RIGHTS (Not All Acres Shown)

CERTIFICATE 45563 (155.0 A)
IRRIGATION
PRIORITY: 6/25/1971



January 4, 2016

This map is not intended to provide legal
dimensions or locations of property
ownership lines

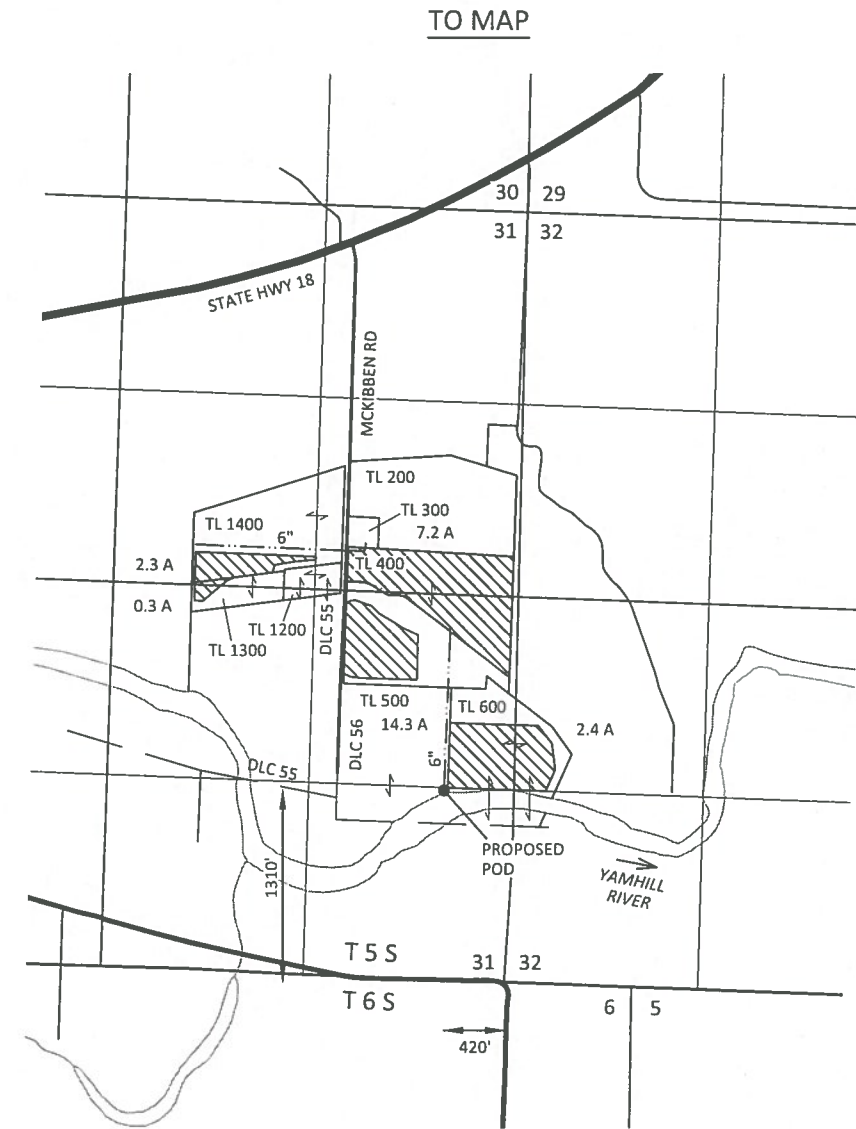
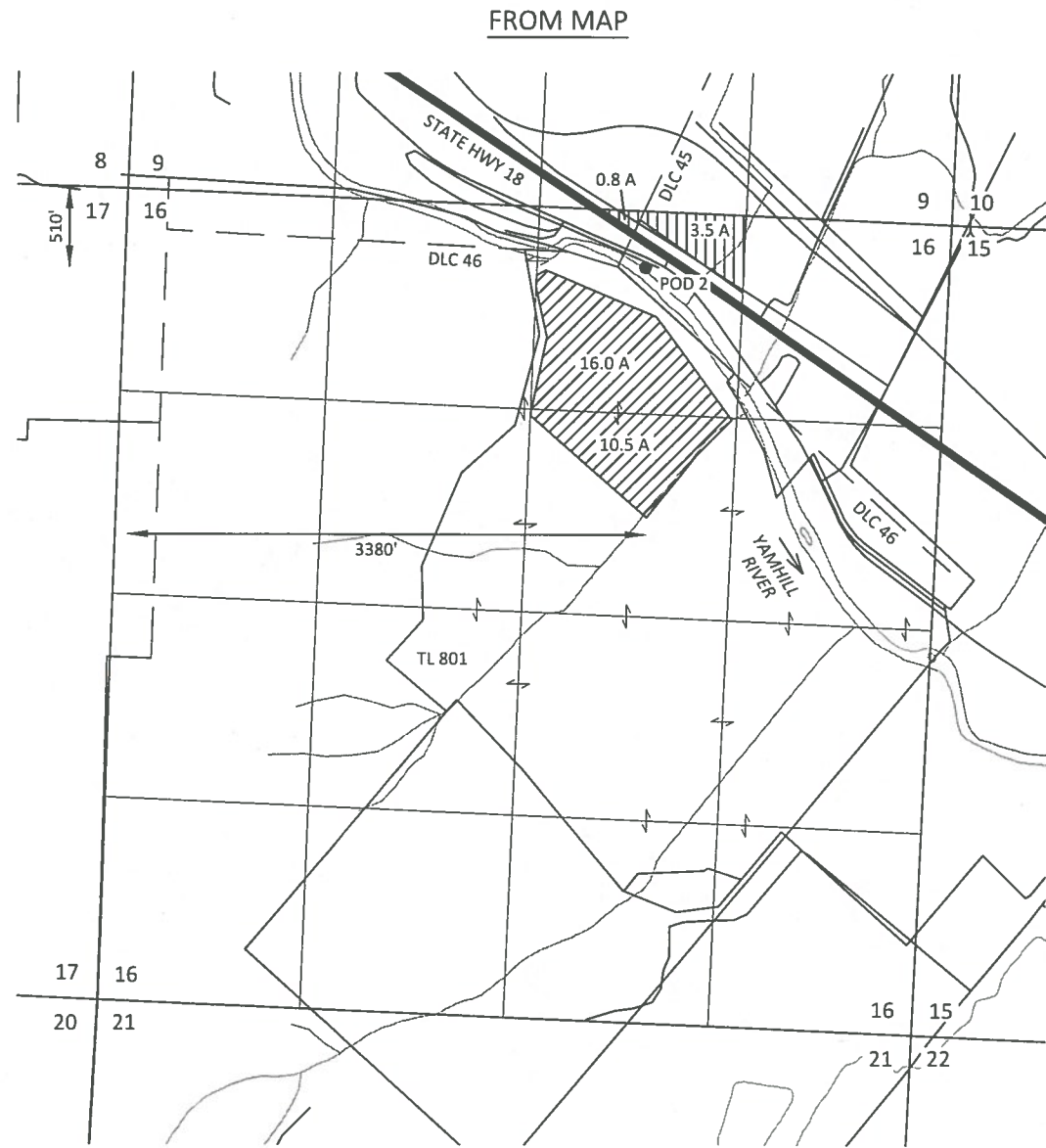
SKOOKUM
WATER ASSOCIATES INC

P.O. BOX 80174
PORTLAND, OR 97280
(503) 319-8926

T 12250

FIGURE 1

TRANSFER APPLICATION MAP
 Certificate 45563
 Section 16, T6S, R7W, W.M., Polk County and
 Sections 31 & 32, T5S, R5W, W.M., Yamhill County
 Christensen Farms



RECEIVED

JAN 19 2016

WATER RESOURCES DEPT
SALEM, OREGON

EXPLANATION

FROM LANDS

CERTIFICATE 45563 (26.5 A)
IRRIGATION
PRIORITY: 6/25/1971

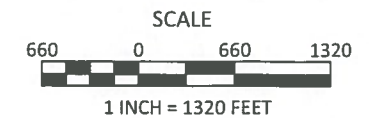
POINT OF DIVERSION (POD)
 PIPELINE (APPROX.)

TO LANDS

CERTIFICATE 45563 (26.5 A)
IRRIGATION
PRIORITY: 6/25/1971

REMAINING RIGHTS (Not All Acres Shown)

CERTIFICATE 45563 (155.0 A)
IRRIGATION
PRIORITY: 6/25/1971



January 4, 2016

This map is not intended to provide legal dimensions or locations of property ownership lines

FIGURE 1

SKOOKUM

WATER ASSOCIATES INC

P.O. BOX 80174
 PORTLAND, OR 97280
 (503) 319-8926

12250