

T5N, R35E, WM
Sections 3, 4, 5, 8, 9, 10
T6N, R35E, WM
Sections 31 and 32
UMATILLA COUNTY

Points of Appropriation

POA 3A: 1156 ft N and 314 ft E from S/4 Corner of Section 3. Flowmeter in same location. Well Log UMAT 55526.
POA 4A: 415 ft S and 500 ft W from Center of Section 4. Flowmeter in same location. Well Log UMAT 55523.

POA 4D: 375 ft S and 940 ft W from Center of Section 4. Flowmeter in same location. Well Log UMAT 56382.
POA 50516: 930 ft S and 1355 ft E from NW Corner of Section 4. Flowmeter in same location. Well Log UMAT 50516.

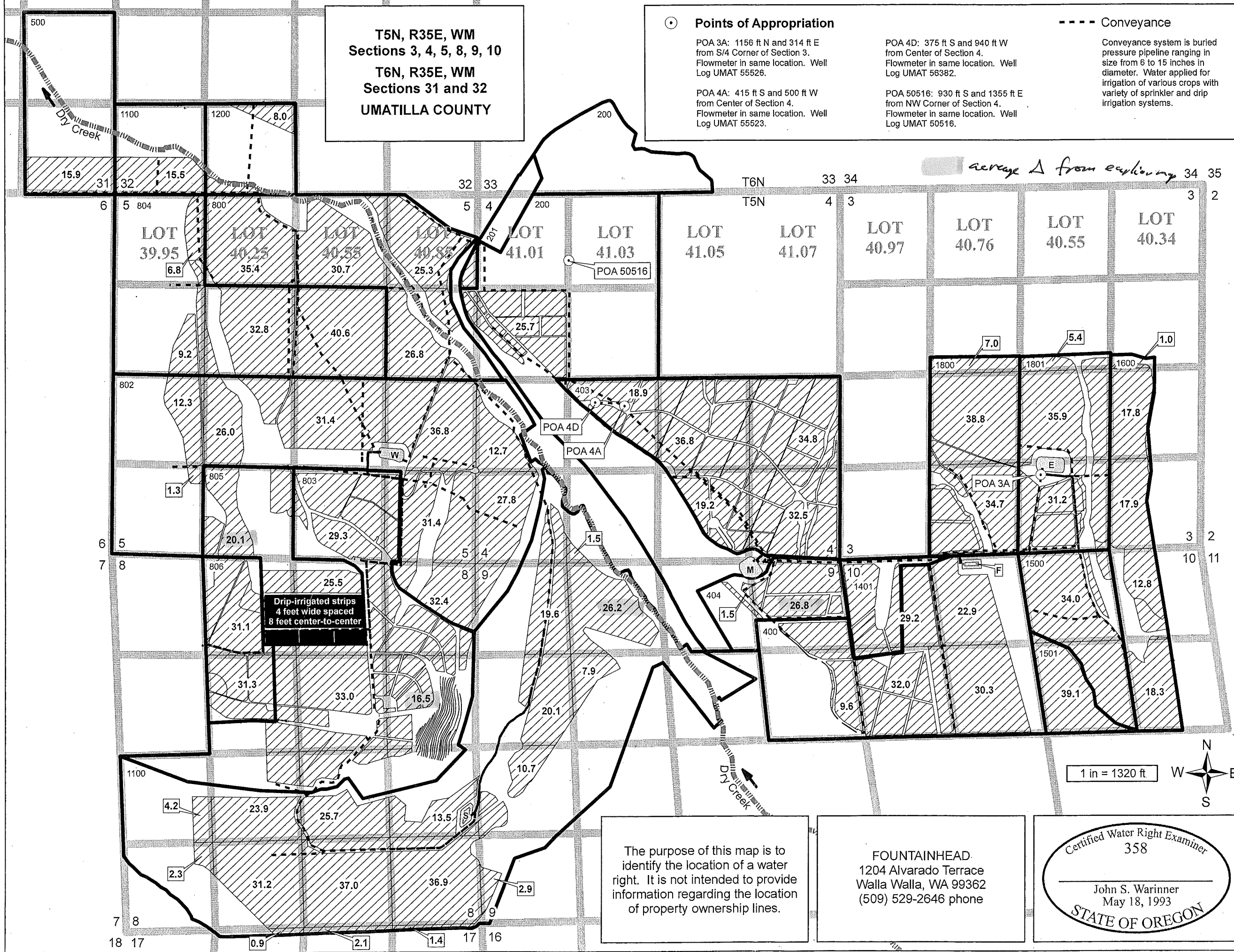
Conveyance

Conveyance system is buried pressure pipeline ranging in size from 6 to 15 inches in diameter. Water applied for irrigation of various crops with variety of sprinkler and drip irrigation systems.

Place of Use

Water used for irrigation of 1528.0 acres:

T5N, R35E, Sec 3, SW NE, 5.4 acres
T5N, R35E, Sec 3, SE NE, 1.0 acre
T5N, R35E, Sec 3, SE NW, 7.0 acres
T5N, R35E, Sec 3, NE SW, 38.8 acres
T5N, R35E, Sec 3, SE SW, 34.7 acres
T5N, R35E, Sec 3, NE SE, 17.8 acres
T5N, R35E, Sec 3, NW SE, 35.9 acres
T5N, R35E, Sec 3, SW SE, 31.2 acres
T5N, R35E, Sec 3, SE SE, 17.9 acres
T5N, R35E, Sec 4, SW NW, 25.7 acres
T5N, R35E, Sec 4, NE SW, 18.9 acres
T5N, R35E, Sec 4, NW SW, 12.7 acres
T5N, R35E, Sec 4, SW SW, 27.8 acres
T5N, R35E, Sec 4, SE SW, 1.5 acres
T5N, R35E, Sec 4, NE SE, 34.8 acres
T5N, R35E, Sec 4, NW SE, 36.8 acres
T5N, R35E, Sec 4, SW SE, 19.2 acres
T5N, R35E, Sec 4, SE SE, 32.5 acres
T5N, R35E, Sec 5, NE NE, 25.3 acres
T5N, R35E, Sec 5, NW NE, 30.7 acres
T5N, R35E, Sec 5, SW NE, 40.6 acres
T5N, R35E, Sec 5, SE NE, 26.8 acres
T5N, R35E, Sec 5, NE NW, 35.4 acres
T5N, R35E, Sec 5, SW NW, 9.2 acres
T5N, R35E, Sec 5, SE NW, 32.8 acres
T5N, R35E, Sec 5, NE SW, 26.0 acres
T5N, R35E, Sec 5, NW SW, 12.3 acres
T5N, R35E, Sec 5, SW SW, 1.3 acres
T5N, R35E, Sec 5, SE SW, 20.1 acres
T5N, R35E, Sec 5, NE SE, 36.8 acres
T5N, R35E, Sec 5, NW SE, 31.4 acres
T5N, R35E, Sec 5, SW SE, 29.3 acres
T5N, R35E, Sec 5, SE SE, 31.4 acres
T5N, R35E, Sec 8, NE NE, 32.4 acres
T5N, R35E, Sec 8, SE NE, 16.5 acres
T5N, R35E, Sec 8, NE NW, 31.1 acres
T5N, R35E, Sec 8, SE NW, 31.3 acres
T5N, R35E, Sec 8, NE SW, 23.9 acres
T5N, R35E, Sec 8, NW SW, 4.2 acres
T5N, R35E, Sec 8, SW SW, 2.3 acres
T5N, R35E, Sec 8, SE SW, 31.2 acres
T5N, R35E, Sec 8, NE SE, 13.5 acres
T5N, R35E, Sec 8, NW SE, 25.7 acres
T5N, R35E, Sec 8, SW SE, 37.0 acres
T5N, R35E, Sec 8, SE SE, 36.9 acres
T5N, R35E, Sec 9, NE NE, 26.8 acres
T5N, R35E, Sec 9, NW NE, 1.5 acres
T5N, R35E, Sec 9, SE NE, 9.6 acres
T5N, R35E, Sec 9, NE NW, 26.2 acres
T5N, R35E, Sec 9, NW NW, 19.6 acres
T5N, R35E, Sec 9, SW NW, 20.1 acres
T5N, R35E, Sec 9, SE NW, 7.9 acres
T5N, R35E, Sec 9, NW SW, 10.7 acres
T5N, R35E, Sec 9, SW SW, 2.9 acres
T5N, R35E, Sec 10, NE NE, 12.8 acres
T5N, R35E, Sec 10, NW NE, 34.0 acres
T5N, R35E, Sec 10, SE NE, 18.3 acres
T5N, R35E, Sec 10, NE NW, 22.9 acres
T5N, R35E, Sec 10, NW NW, 29.2 acres
T5N, R35E, Sec 10, SW NW, 32.0 acres
T5N, R35E, Sec 10, SE NW, 30.3 acres
T5N, R35E, Sec 17, NE NE, 1.4 acre
T5N, R35E, Sec 17, NW NE, 2.1 acres
T5N, R35E, Sec 17, NE NW, 0.9 acres
T6N, R35E, Sec 31, SE SE, 15.9 acres
T6N, R35E, Sec 32, SW SW, 15.5 acres
T6N, R35E, Sec 32, SE SW, 8.0 acres



Drip-irrigated strips
4 feet wide spaced
8 feet center-to-center

The purpose of this map is to identify the location of a water right. It is not intended to provide information regarding the location of property ownership lines.

FOUNTAINHEAD
1204 Alvarado Terrace
Walla Walla, WA 99362
(509) 529-2646 phone

Certified Water Right Examiner
358
John S. Warinner
May 18, 1993
STATE OF OREGON

CLAIM OF BENEFICIAL USE MAP
Application G-16322
Permit G-15883
Permit Amendment T-10777
in the name of
SEVEN HILLS PROPERTIES, LLC
Revised: 24 MAY 2010

R35E

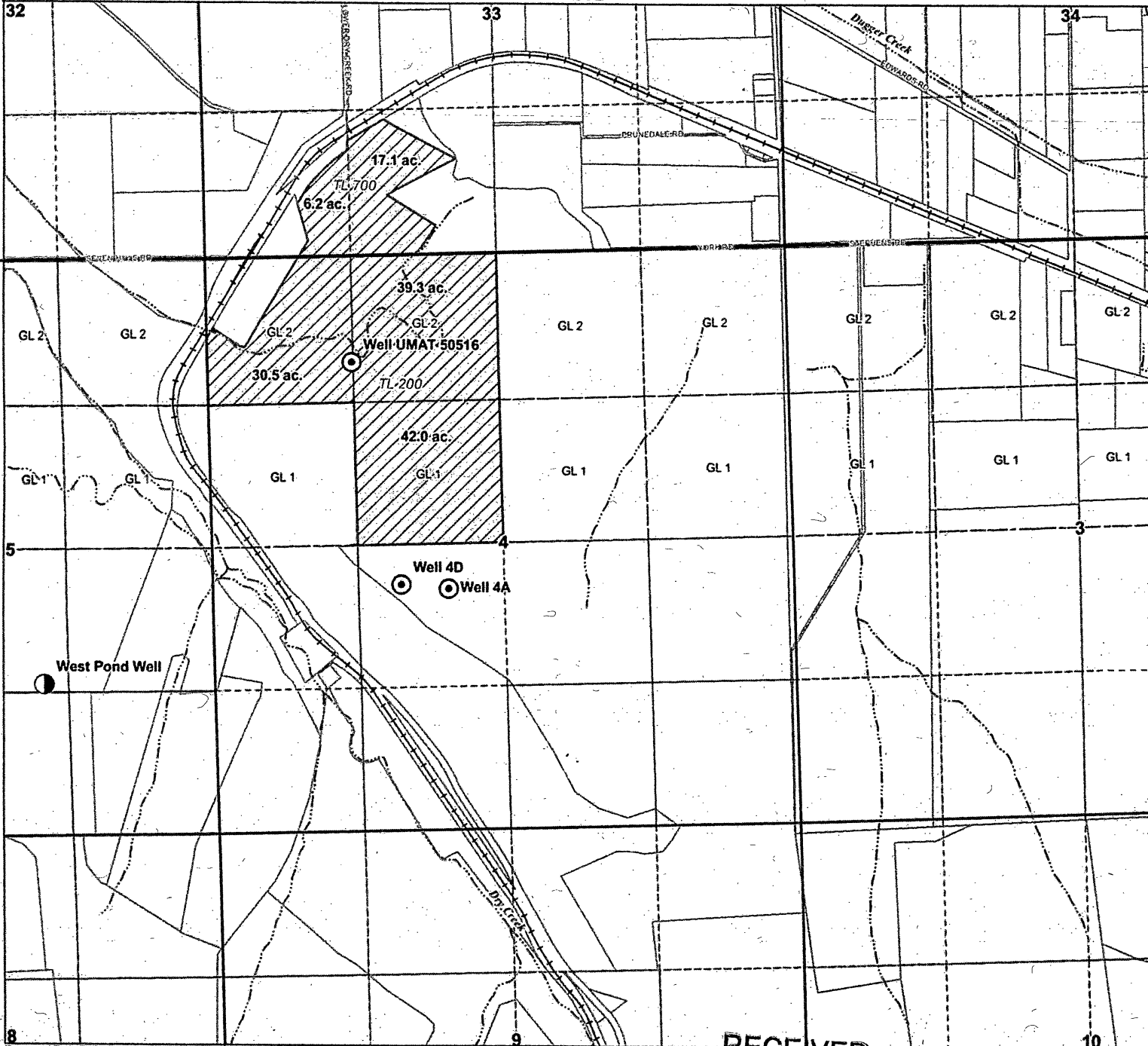
32

33

34

T6N

T5N



**Application for a
Water Right Transfer
Additional Point of Appropriation
Certificate 88639 (Permit G-13010)**

Seven Hills Properties
Water Association
Umatilla County

LEGEND

- ⊙ Authorized Point of Appropriation (POA)
- Proposed Additional POA
- ▨ Place of Use (POU)
- ⊕ Tax Lot
- Government Lot (GL)
- +— Railroads
- ~ Watercourse
- 🌊 Waterbody

POA LOCATION DESCRIPTIONS

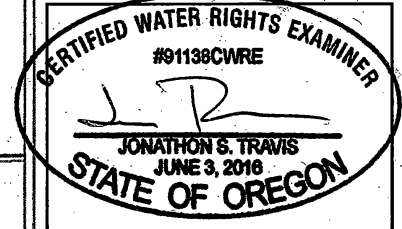
Well 4A (UMAT55523) Located 415 feet South and 500 feet West from the C1/4 corner of Section 4, Township 5 North, Range 35 East (W.M.)

Well 4D (UMAT 56382) Located 375 feet South and 940 feet West from the C1/4 corner of Section 4, Township 5 North, Range 35 East (W.M.)

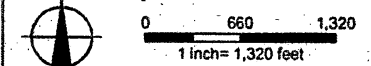
Well UMAT 50516 Located 930 feet South and 1355 feet East from the NW corner of Section 4, Township 5 North, Range 35 East (W.M.)

West Pond Well Located 1360 feet North and 1575 feet West from the SE corner of Section 5, Township 5 North, Range 35 East (W.M.)

Certified Water Rights Examiner Stamp



EXPIRES: 6/30/2018



DISCLAIMER
This map was prepared for the purpose of identifying the location of a water right only and it is not intended to provide legal dimensions or location of property ownership lines.

MAP NOTES:
Date: December 31, 2015
Data Sources: Umatilla Co. GIS, OGC, US BLM, USGS, ESRI



RECEIVED

JAN 22 2018

Application for a
Water Right Transfer
Additional Point of Appropriation
 Certificate 86441 (Permit G-15883)
 Seven Hills Properties Water Association
 Umatilla County

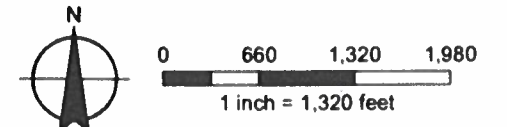
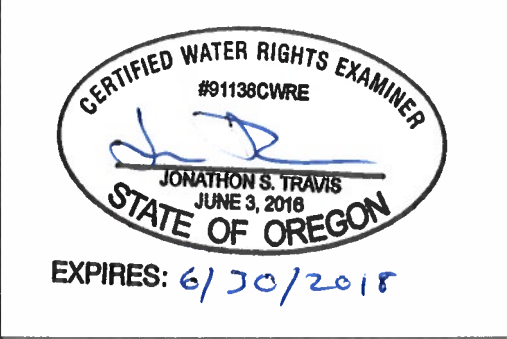
LEGEND

- Authorized Point of Appropriation (POA)
- Proposed Additional POA
- Place of Use (POU)
- Tax Lot
- Government Lot (GL)
- Railroads
- Watercourse
- Waterbody

POA LOCATION DESCRIPTIONS

Well 4A (UMAT55523) Located 415 feet South and 500 feet West from the C1/4 corner of Section 4, Township 5 North, Range 35 East (W.M.)
Well 4D (UMAT 56382) Located 375 feet South and 940 feet West from the C1/4 corner of Section 4, Township 5 North, Range 35 East (W.M.)
Well UMAT 50516 Located 930 feet South and 1355 feet East from the NW corner of Section 4, Township 5 North, Range 35 East (W.M.)
West Pond Well Located 1360 feet North and 1575 feet West from the SE corner of Section 5, Township 5 North, Range 35 East (W.M.)

Certified Water Rights Examiner Stamp



DISCLAIMER
 This map was prepared for the purpose of identifying the location of a water right only and it is not intended to provide legal dimensions or location of property ownership lines
MAP NOTES:
 Date: December 31, 2015
 Data Sources: Umatilla Co. GIS, OGIC, US BLM, USGS, ESRI

RECEIVED
 JAN 22 2018
 OWRD

