

This map was prepared for Assessment & Taxation purposes only and was NOT prepared nor is it suitable for legal, engineering or surveying purposes.



SW1/4 SW1/4 SEC 13 T4N R28E WM UMATILLA COUNTY

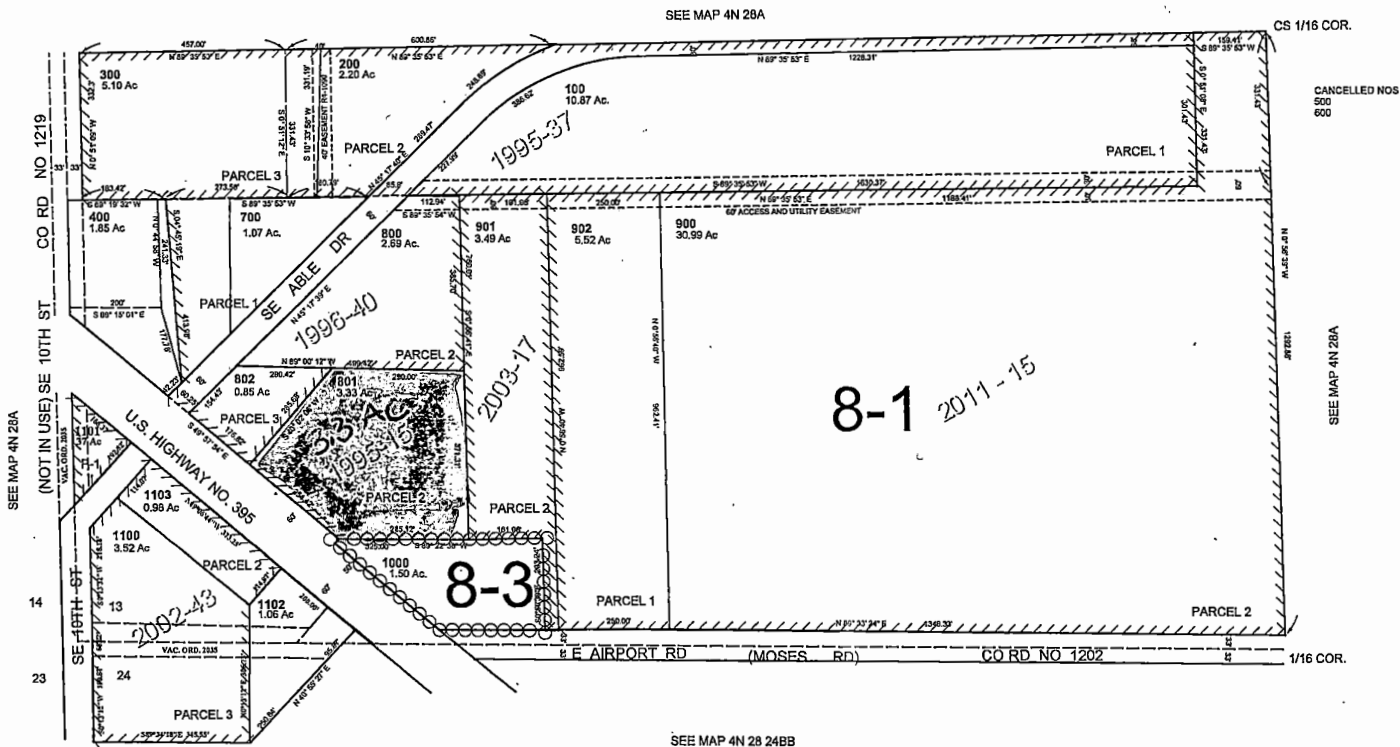
4N 28 13C

AERIAL PHOTO NO 2P-21

SCALE: 1" = 200'



Remaining Right
Partial CN 91246
T-12817



CANCELLED NOS
500
600

SEE MAP 4N 28A

8-1 2011-15

8-3