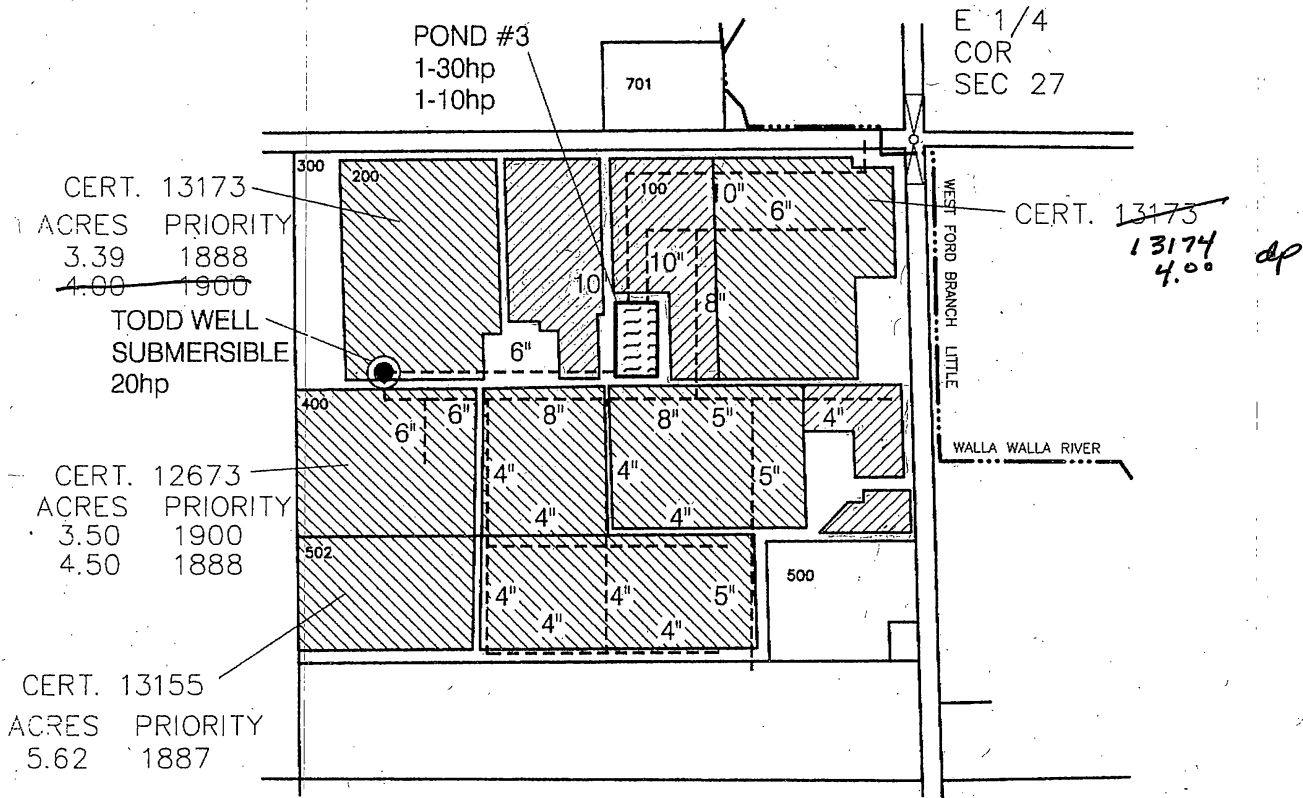


APPLICATION FOR ALLOCATION AND USE OF CONSERVED WATER

for

CW-14

TODD AND ALAN DAVIS
NE 1/4, SE 1/4 SEC 27
T 6N, R 35 E. WM



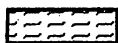
3.9Ac CONSERVED WATER TO BE APPLIED HERE



22.1Ac AREAS CONSERVATION WILL TAKE PLACE

709

TAX LOT NUMBER (TYP)

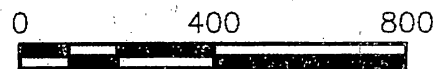


POND (TYP)

RECEIVED

FEB 05 2001

WATER RESOURCES DEPT.
SALEM, OREGON



SCALE IN FEET