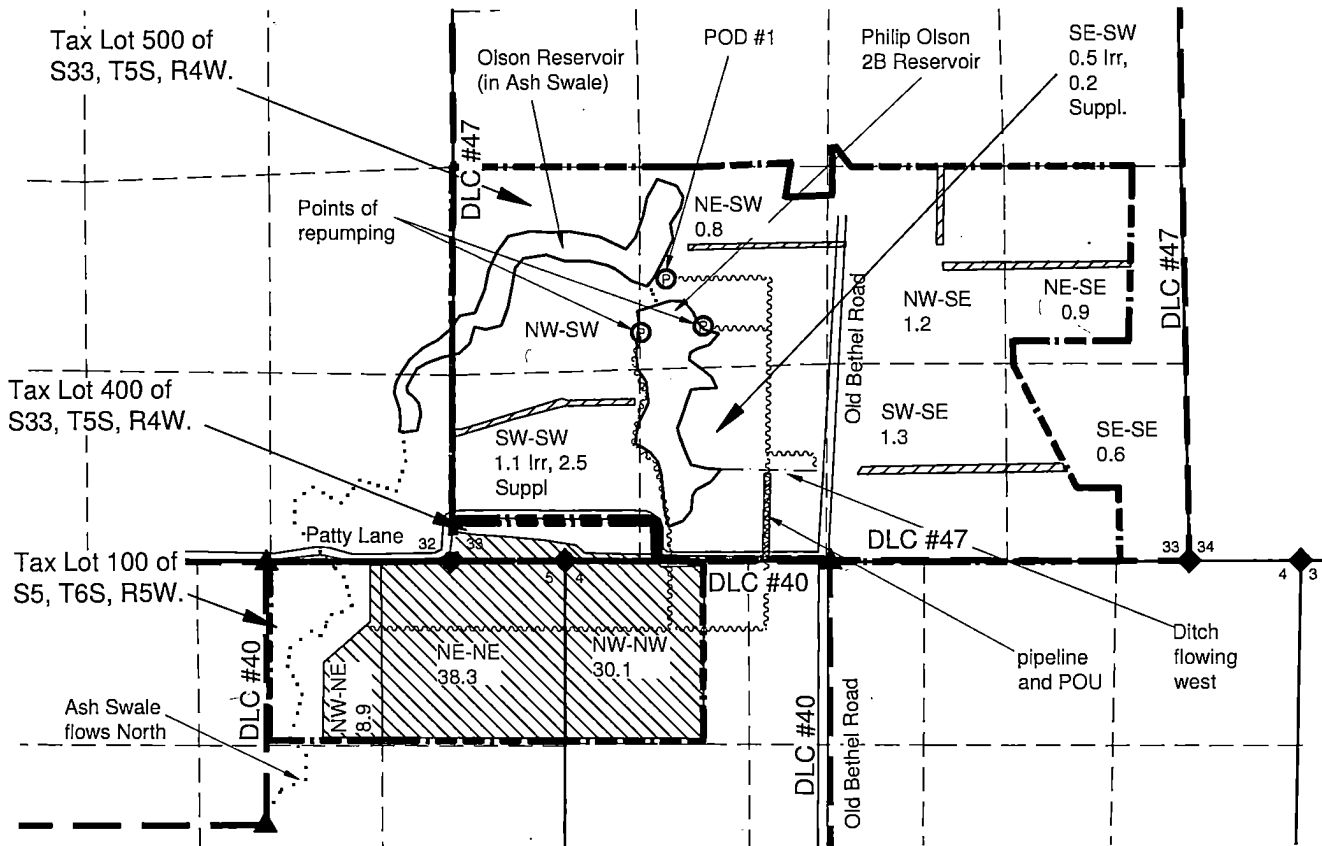


MAP FOR
CLAIM OF BENEFICIAL USE
S33, T5S, R4W & S4 & 5 T6S, R4W YAMHILL COUNTY
FOR TRANSFER T-12519



POD 1 is 500' S AND 1200' W of C1/4 of S33 (per Cert 91708)

NOTES:

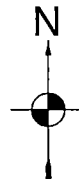
- THIS MAP IS NOT INTENDED TO PROVIDE LEGAL DIMENSIONS OR LOCATIONS OF PROPERTY OWNERSHIP LINES.
- THE PROPERTY LINES ARE BASED ON JUDGEMENT USING A COMBINATION OF TAX ASSESSOR MAPS, WATER RIGHT MAPS, AND AN AERIAL PHOTO. FOUR SECTIONS AND TWO TOWNSHIP CONVERGE AT THIS POINT AND BECAUSE OF THAT INCONSISTENCIES DO EXIST IN THE MAPS. QUARTER-QUARTER LINES ARE ESTIMATED FROM TAX ASSESSOR MAPS.
- THE NUMBER IN THE QUARTER-QUARTER (Q-Q) LABEL ARE THE ACRES OF IRRIGATION PER Q-Q.



RECEIVED

NOV 29 2018

OWRD



1 IN = 1320 FT
 0 660 1320

MAP BY:
ASPEN RURAL LAND CONSULTING
 ERIC URSTADT, PE, PLS
 971-250-1520
 Nov 2018
 Olson3GAmend

LEGEND

- ▲ DONATION LAND CLAIM (DLC) CORNER
- ◆ SECTION OR QUARTER CORNER (COULD ALSO BE DLC CORNER)
- ⊙ POINT OF DIVERSION (POD 1)
- ~~~~~ UNDERGROUND PIPELINE (APPROXIMATE LOCATION)
- - - DITCH FOR CONVEYANCE
- - - QUARTER-QUARTER LINE
- DLC LINE
- TAX LOT LINE
- SECTION LINE
- STREAM
- ////// PRIMARY IRRIGATION
- ////// SUPPLEMENTAL IRRIGATION (CERT. 33666 IS PRIMARY).