

CLAIM OF BENEFICIAL USE MAP for the BLM PROVOLT SEED ORCHARD Under T-9726
 Primary Irrigation Water Rights with an October 1898 Priority

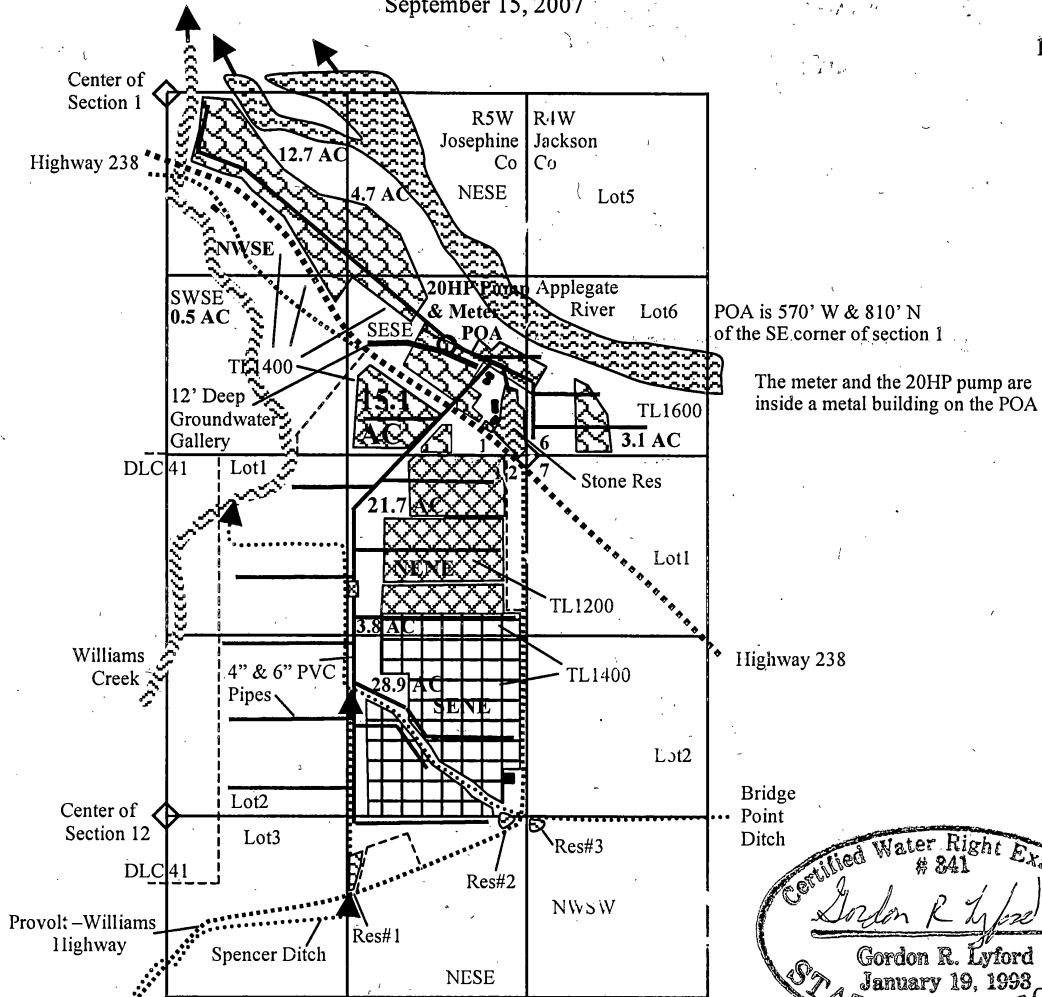
T38S, R5W, Portions of Sections 1 and 12, W.M., Josephine County

T38S, R4W, Portions of Section 6, W.M., Jackson County

September 15, 2007


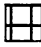


N

1" = 1320'



Certified Water Right Examiner
 # 341
Gordon R. Lyford
 Gordon R. Lyford
 January 19, 1993
 STATE OF OREGON

exp 12-31-2008 9-15-2007

-  Irrigation from Certificate #32813 under T-9726 from the POA with an October 1898 priority at 17.79 cfs per acre. 12.7 acres in the NW1/4SE1/4, 0.5 acres in the SW1/4SE1/4, 4.7 acres in the NE1/4SE1/4, and 15.1 acres in the SE1/4SE1/4 of section 1. 3.1 acres in Lot 6 (SW1/4SW1/4) of section 6.
-  Irrigation from Certificate #32818 under T-9726 from the POA with an October 1898 priority at 17.79 cfs per acre. 3.8 acres in the NE1/4NE1/4 and 28.9 acres in the SE1/4NE1/4 of section 12.
-  Irrigation from Certificate #32820 under T-9726 from the POA with an October 1898 priority at 17.78 cfs per acre. 21.7 acres in the NE1/4NE1/4 of section 12.
-  Point of Appropriation.

RECEIVED

OCT 11 2007

WATER RESOURCES DEPT
 BUREAU OF LAND MANAGEMENT

This map was drawn by Gordon R. Lyford for the Bureau of Land Management that manages tax lots 900, 1200, 1400, 1401, 1402, 1500, 1600, 1601, 2800, and 2900. This map is for the purpose of identifying the location of the water rights only and is not intended to provide legal dimensions or locations of property ownership lines.