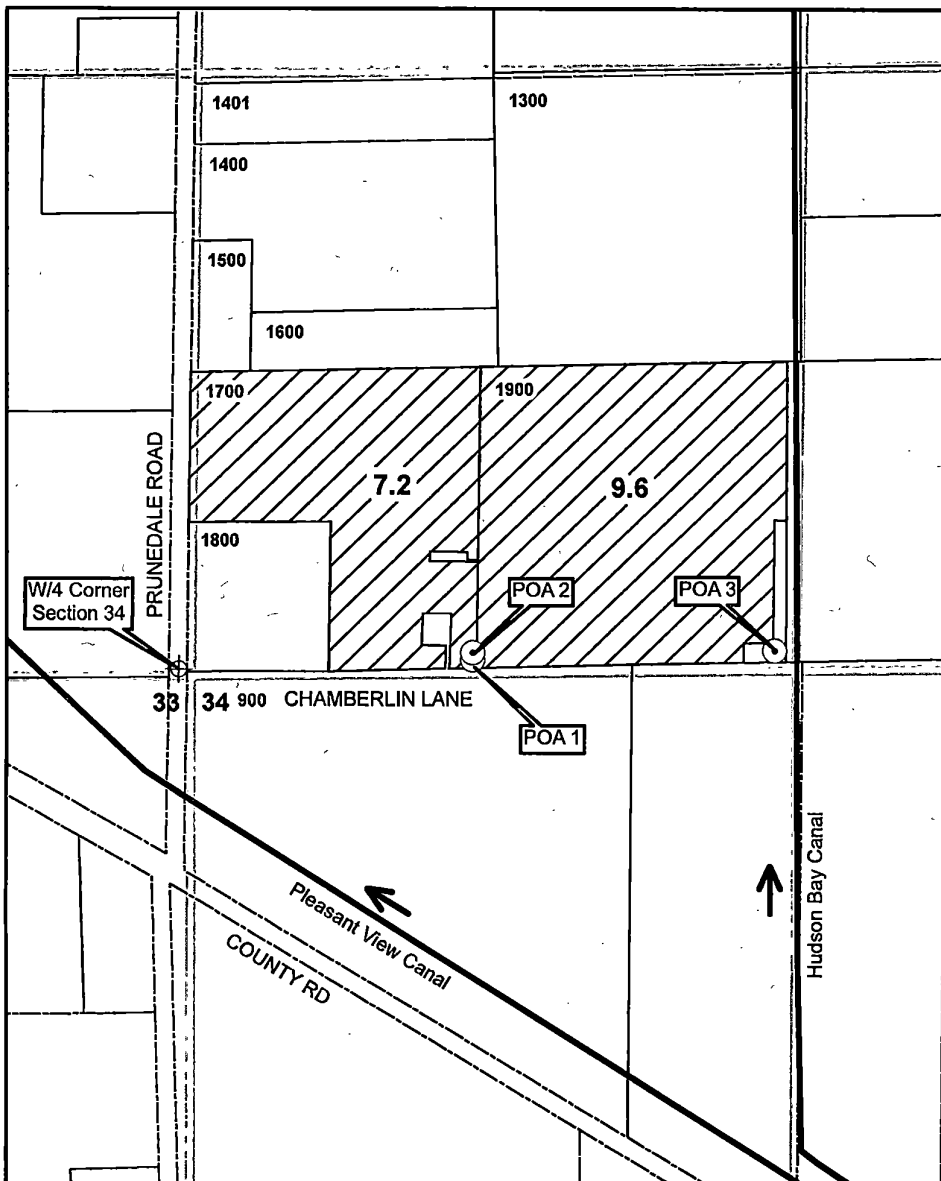


SW/4 of NW/4 of S34, T6N, R35E, WM (Umatilla County)



⊙ Authorized POA

POA 1 is an alluvial well located in the SW/4 of NW/4, Section 34, T6N, R35E, WM, at a distance 25 feet N and 640 feet E from W/4 Corner of Section 34. Well Log UMAT 5025. Flowmeter at same location.

POA 2 is an alluvial well located in the SW/4 of NW/4, Section 34, T6N, R35E, WM, at a distance 40 feet N and 640 feet E from W/4 Corner of Section 34. Well Log UMAT 57687. Flowmeter at same location.

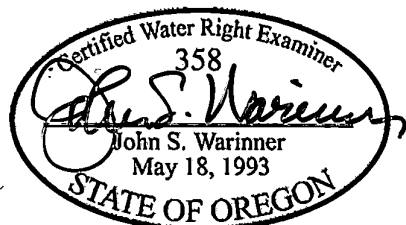
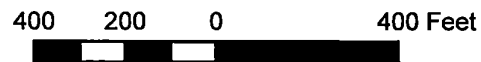
POA 3 is an alluvial well located in the SW/4 of NW/4, Section 34, T6N, R35E, WM, at a distance 40 feet N and 1280 feet E from W/4 Corner of Section 34. Alluvial (gravel) well with no known well log. Flowmeter at same location.

▨ Authorized POU

16.8 acres in SW NW, Sec 34, T6N, R35E, WM

7.2 acres in TL 1700
9.6 acres in TL 1900

RECEIVED
OCT 05 2018
OWF



The purpose of this map is to identify the location of a water right. It is not intended to provide information regarding the location of property ownership boundary lines.

**CLAIM OF BENEFICIAL USE MAP
Transfer 12592 - Additional POAs**

in the name of
CAYUSE VINEYARDS, LLC



10 OCT 2018
PROJECT NO.
180037

BY:
JSW
REVISED BY:
JSW

FIGURE NO.
1