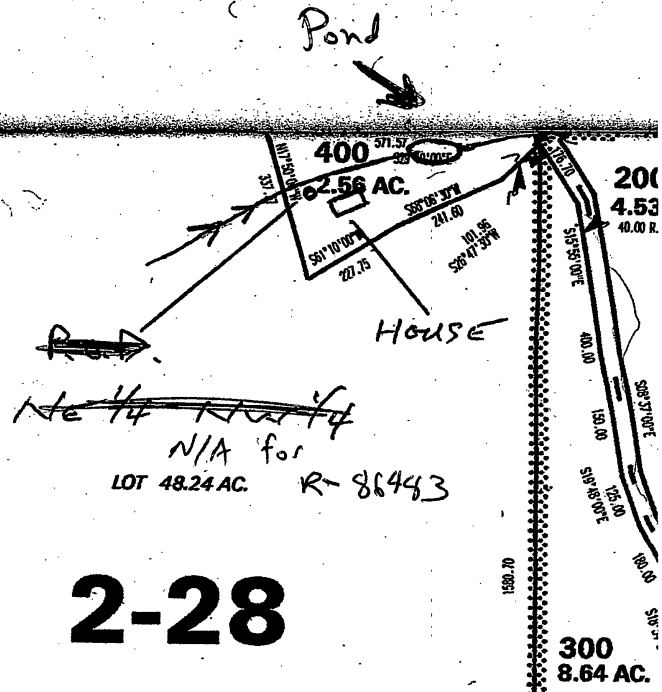


401
93.55 AC.

LOT 47.87 AC.



~~NE 1/4 NW 1/4~~
 N/A for
 LOT 48.24 AC. R-86443

2-28

500
333.00 AC.

Pond LOCATED from N 1/4 CORNER
 178 ft WEST
 55 ft SOUTH

700
93.60 AC.

RECEIVED BY OWRD

JUL 07 2016

SALEM, OR

600
80.00 AC.

See Map 10.6.4