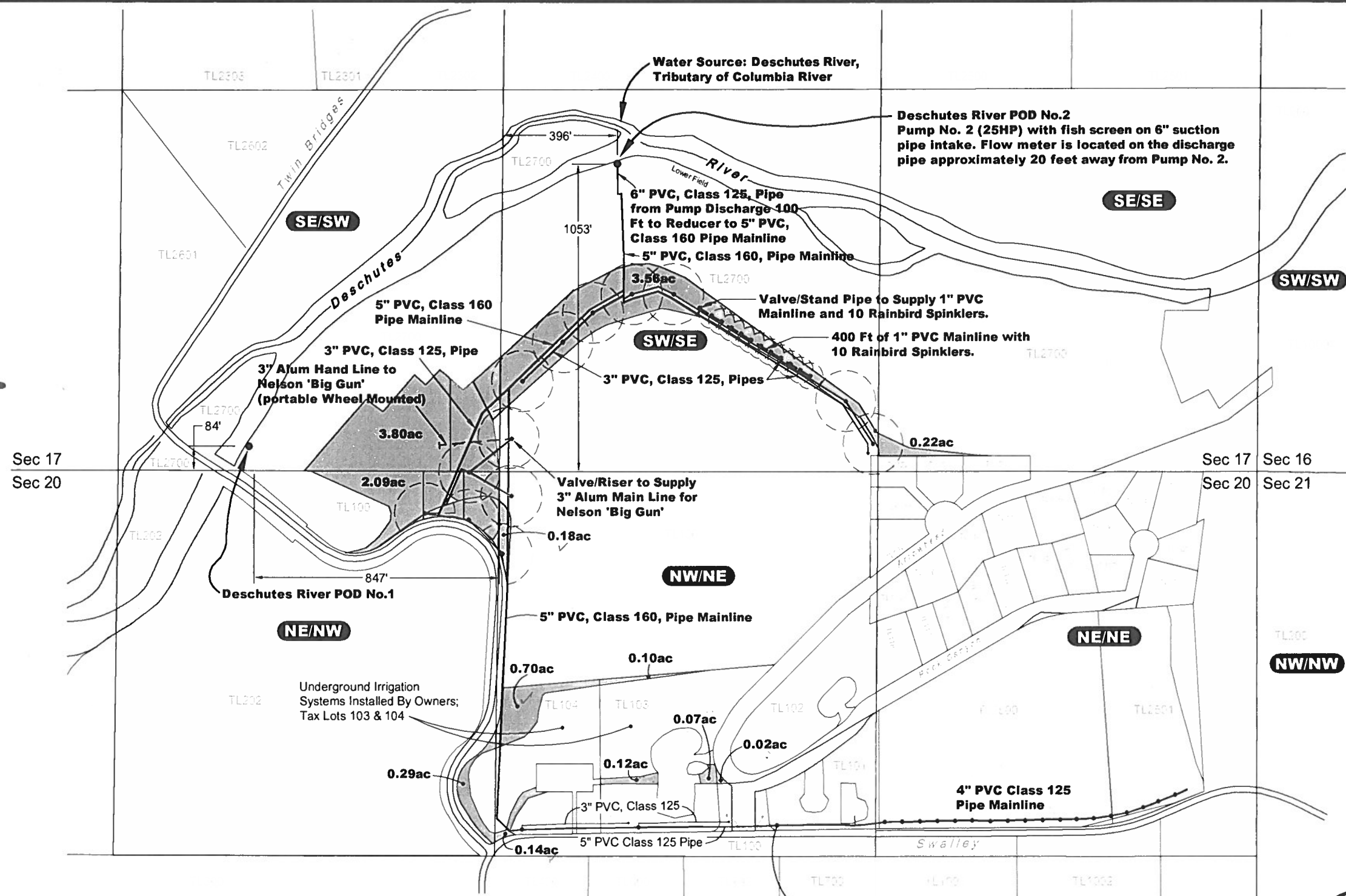


COBU Map 892

G:\1000\1028\101\Cad\Water\W1028101_F1_To COBU 10:41 01/13/2015 SS



T16S, R12E
Sections 17 & 20

RECEIVED BY OWRD
FEB 04 2015
SALEM, OR

EXPLANATION

"TO" Swalley Irrigation District CW-43 (C-74145)

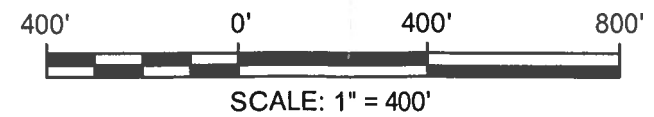
TRANSFER ACREAGES

"TO" Swalley Irrigation District C74145 From DRR: 1.63 Ac
"TO" Swalley Irrigation District C74145 From Offsite: 9.66 Ac

NOTES

1. This map was prepared for the purpose of identifying the location of water rights only and is not intended to provide legal dimensions or locations of property ownership lines.
2. 3" Class 125 pipes (2) at south boundary of Tax Lots 103 and 104 supply water to underground sprinkler system that includes irrigation of all transferred water (1.15 Ac) on Tax Lots 103 & 104.

Certified Water Rights Examiner
DAVID J. NEWTON
JAN. 16, 1996
STATE OF OREGON



Claim of Beneficial Use Map
Swalley Irrigation District CW-43
(Swalley Irrigation District C-74145)
Deschutes River Ranch, Oregon



NEWTON
CONSULTANTS INC.
Earth, Water and Rock Specialists
Ph: 541 504-9960
Fax: 541 504-9961

DESIGNED BY:
D. Newton

DRAWN BY:
S. Schenck

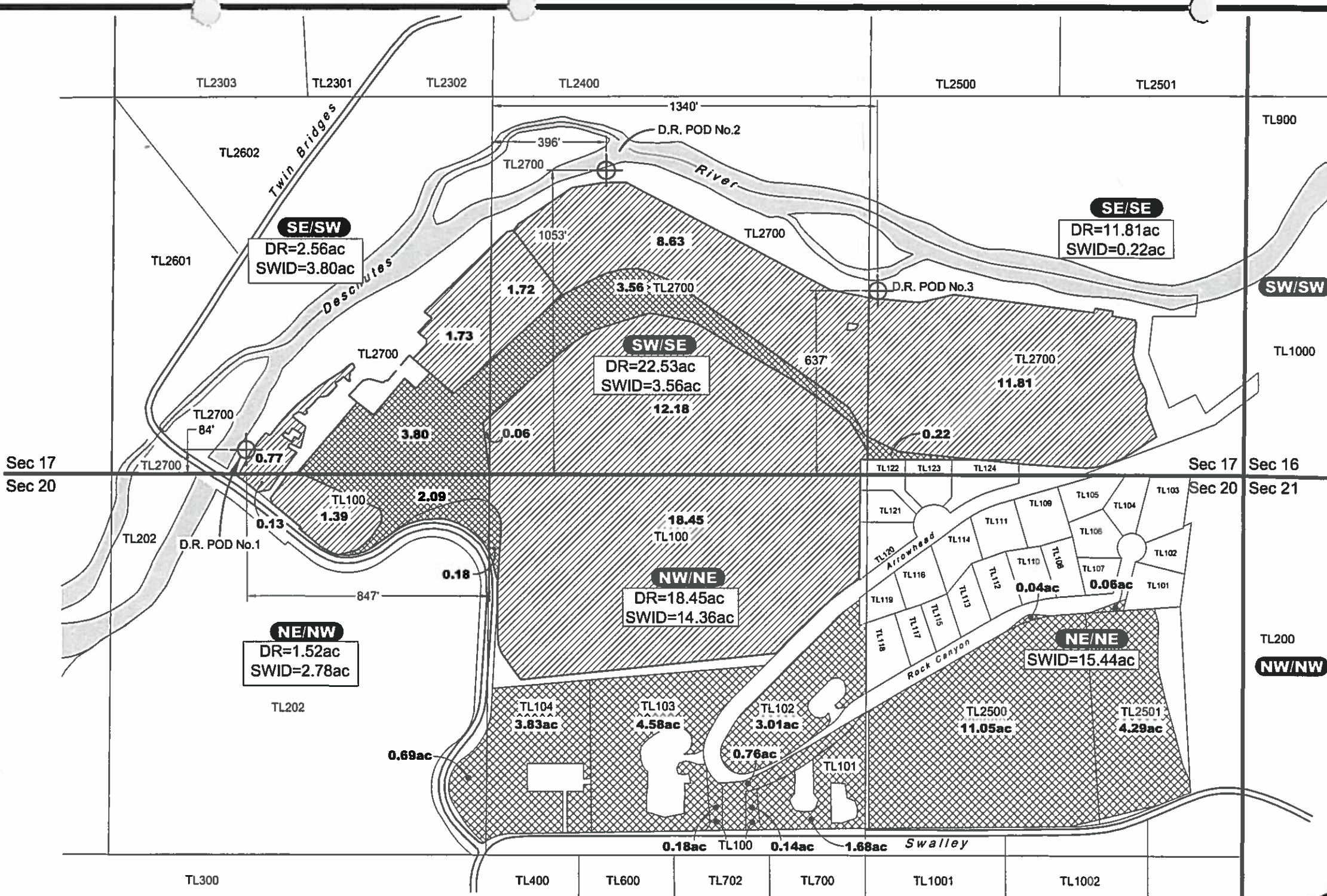
DATE:
OCT 2015

PROJECT NO.:
1028-101

FIGURE
1

C:\1000\1028\101\Cad\Water\W1028101_F1_FrTo mp 13:43 06/14/2007 SS

RECEIVED
JUN 27 2007
WATER RESOURCES DEPT
SALEM, OREGON



T16S, R12E
 Sections 17 & 20

Water Right Table

	SWID Acres	DR Acres
SE/SW	3.80	2.56
NE/NW	2.78	1.52
SW/SE	3.56	22.53
NW/NE	14.36	18.45
SE/SE	0.22	11.81
NE/NE	15.44	0.00
	40.16	56.87

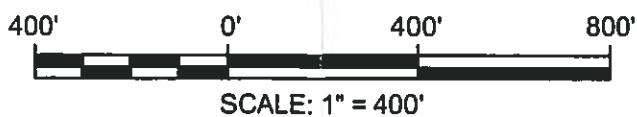
DR = Direct River

EXPLANATION

- Deschutes River Diversion
C13600, T8099 V.53 P74
- Swalley Irrigation District
C74145

NOTES

THIS MAP WAS PREPARED FOR THE PURPOSE OF IDENTIFYING THE LOCATION OF WATER RIGHTS ONLY AND IS NOT INTENDED TO PROVIDE LEGAL DIMENSIONS OR LOCATIONS OF PROPERTY OWNERSHIP LINES.



Conservation Map
Deschutes River Ranch, Oregon

NEWTON CONSULTANTS INC.
 Earth, Water and Rock Specialists
 Ph: 541 504-9960 Fax: 541 504-9961

DESIGNED BY: **M. Perte** DRAWN BY: **S. Schenck** DATE: **JUNE 2007** PROJECT NO.: **1028-101** FIGURE: **8**