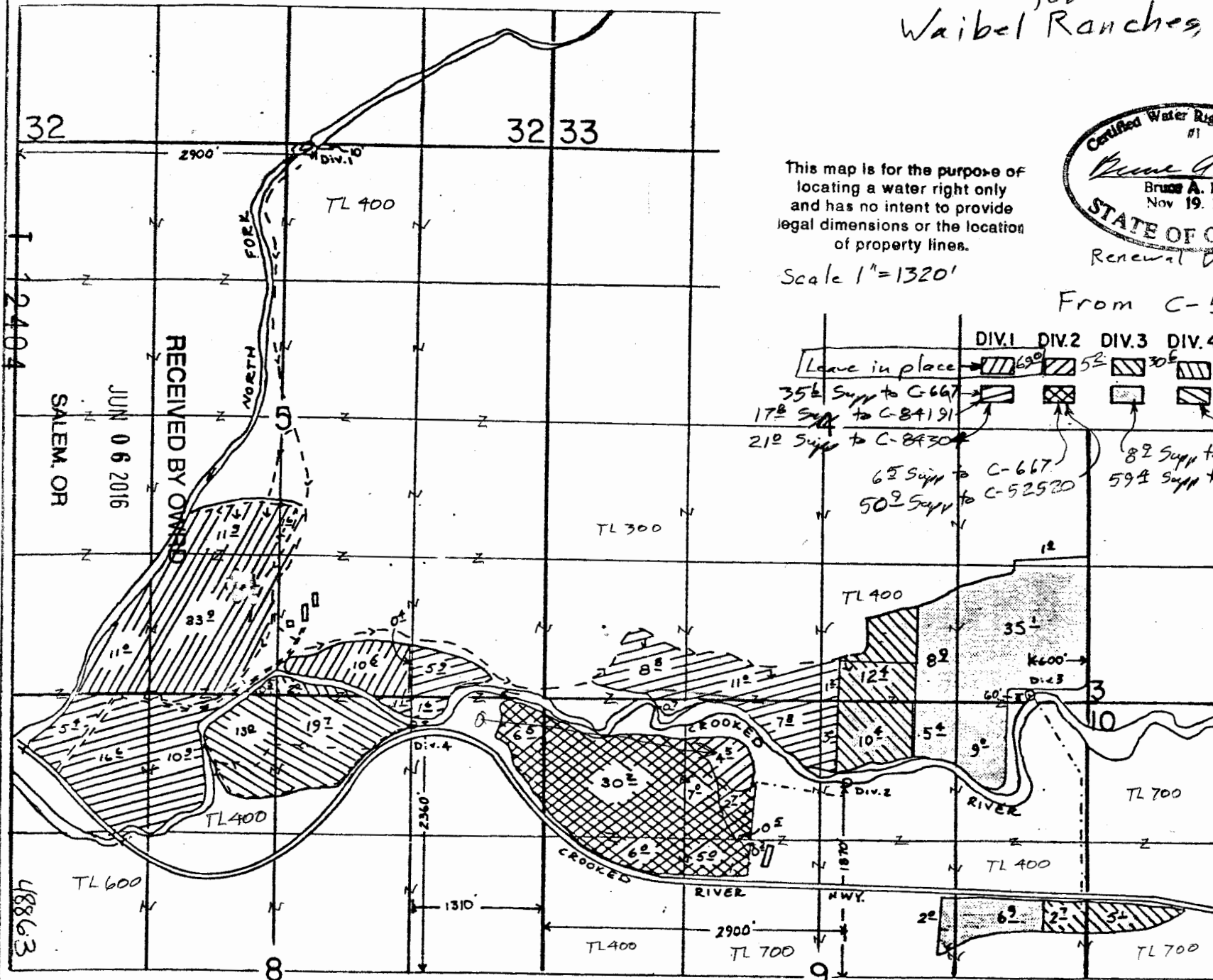


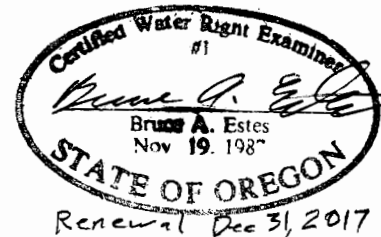
T.17S., R.21E., W.M.

Transfer Application Map
for
Waibel Ranches, LLC



This map is for the purpose of locating a water right only and has no intent to provide legal dimensions or the location of property lines.

Scale 1"=1320'



From C-55659

	DIV.1	DIV.2	DIV.3	DIV.4	
Leave in place	630	52	30E	25	PRIMARY
35E Supp to C-667					SUPPLEMENTAL
17E Supp to C-84191					
21E Supp to C-8430					
65 Supp to C-667					82 Supp to C-37548 (Service Co.)
50E Supp to C-52520					59E Supp to C-84305 & 84192

ESTES SURVEYS, LLC
 PO Box 17519
 60382 Arnold Rd
 Salem, OR 97305-7519 Bend, OR 97702
 (503) 585-7503 (541) 382-7331

RECEIVED BY OWNER
 JUN 06 2016
 SALEM, OR

48863

T.17S., R.21E., W.M.

FINAL PROOF SURVEY
UNDER

Application No. 46887 Permit No. 48863

IN NAME OF
LES SCHWAB TIRE CENTER

Surveyed Oct. 28, 1985 by L. Olson

SCALE: 1" = 1320'

DIV.1	DIV.2	DIV.3	DIV.4	
				PRIMARY
				SUPPLEMENTAL

