

SEP 11 2000

RECEIVED

STORAGE RESERVOIR
SITE - TWO 20,000 GAL.
RESERVOIRS
RESERVOIR FLOOR ELEV. = 3130

CLAIM OF BENEFICIAL USE
MAP FOR
QUAIL VALLEY PARK
IMPROVEMENT DISTRICT
LOCATED IN THE W1/2 NW1/4,
W1/2 SW1/4 AND SE1/4 SW1/4
OF SECTION 26, T.14S., R.16E.,
W.M., CROOK COUNTY, OREGON

PREPARED FOR
QUAIL VALLEY PARK
IMPROVEMENT DISTRICT
P.O. BOX 175
PRINEVILLE, OR 97754
DICK COSGRIFFE, PRESIDENT
(541) 447-6715

PREPARED BY
ARMSTRONG SURVEYING
& ENGINEERING, INC.
378 NE SECOND ST.
PRINEVILLE, OR 97754
(541) 447-7791 PHONE
(541) 416-1602 FAX
EMAIL: DArm378@aol.com
DAVID B. ARMSTRONG, CWRE 145

SURVEY NOTE

THE PREPARATION OF THIS MAP IS FOR THE PURPOSE OF
IDENTIFYING THE LOCATION OF THE WATER RIGHT ONLY AND
HAS NO INTENT TO PROVIDE DIMENSIONS OR LOCATIONS OF
PROPERTY OWNERSHIP LINES.

NOTE

ALL LOTS SHOWN HEREON ARE BEING SERVED FROM THIS
GROUP DOMESTIC SYSTEM EXCEPT TL 2000 OF TAX MAP
14-16-26

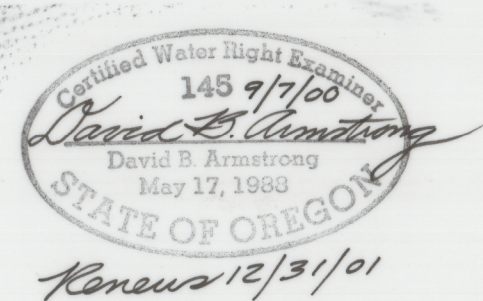
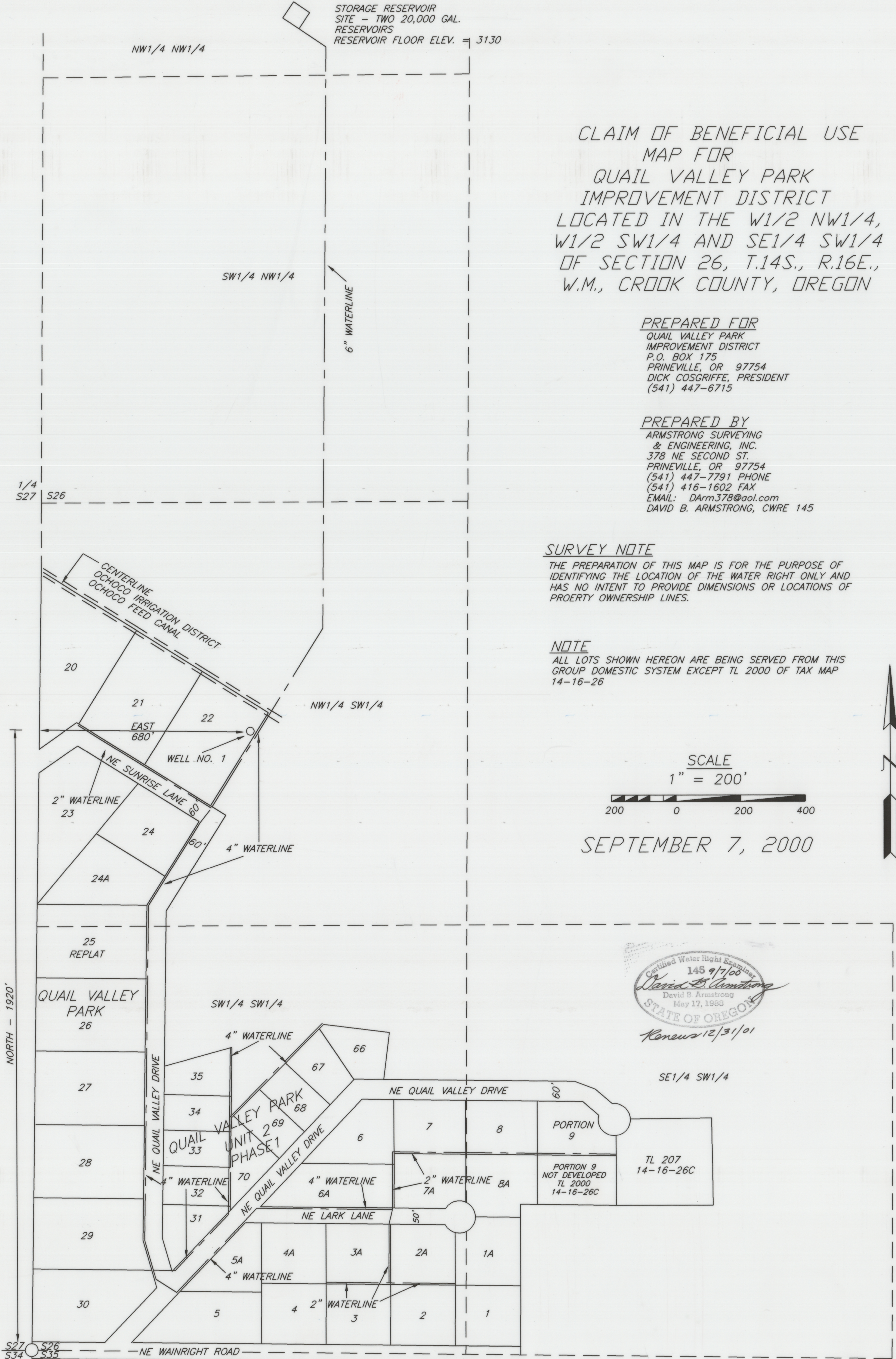
SCALE
1" = 200'



SEPTEMBER 7, 2000



0072



COBU MAP # 0072

G-12582