

NOTES

THIS IS A BENEFICIAL USE MAP TO ACCOMPANY APPLICATION: G-16103, PERMIT: G-15838.

THIS MAP IS NOT INTENDED TO PROVIDE LEGAL DIMENSIONS OR LOCATIONS OF PROPERTY OWNERSHIP LINES.

AREA IRRIGATED
SECTION 28
NW1/4 SE1/4 2.0 AC
SW1/4 SE1/4 3.0 AC
NE1/4 SW1/4 23.0 AC
NW1/4 SW1/4 9.0 AC
SW1/4 SW1/4 22.0 AC
SE1/4 SW1/4 36.0 AC

SECTION 33
NW1/4 NE1/4 18.2 AC
SW1/4 NE1/4 1.7 AC
NE1/4 NW1/4 20.0 AC
NW1/4 NW1/4 9.0 AC
SE1/4 NW1/4 1.3 AC

TOTAL AREA IRRIGATED 145.2

⊗ POINT OF DIVERSION = WELL WITH PUMP AND WATER METER.

--- UNDERGROUND 5" PVC PIPE

..... TAXLOT LINES

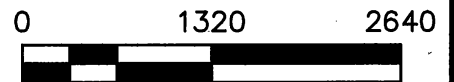
BARN AREA NOT IRRIGATED

RECEIVED BY OWRD

NOV 03 2016

SALEM, OR

SCALE:
1" = 1320'



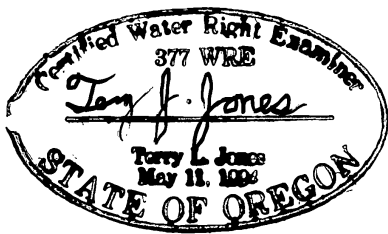
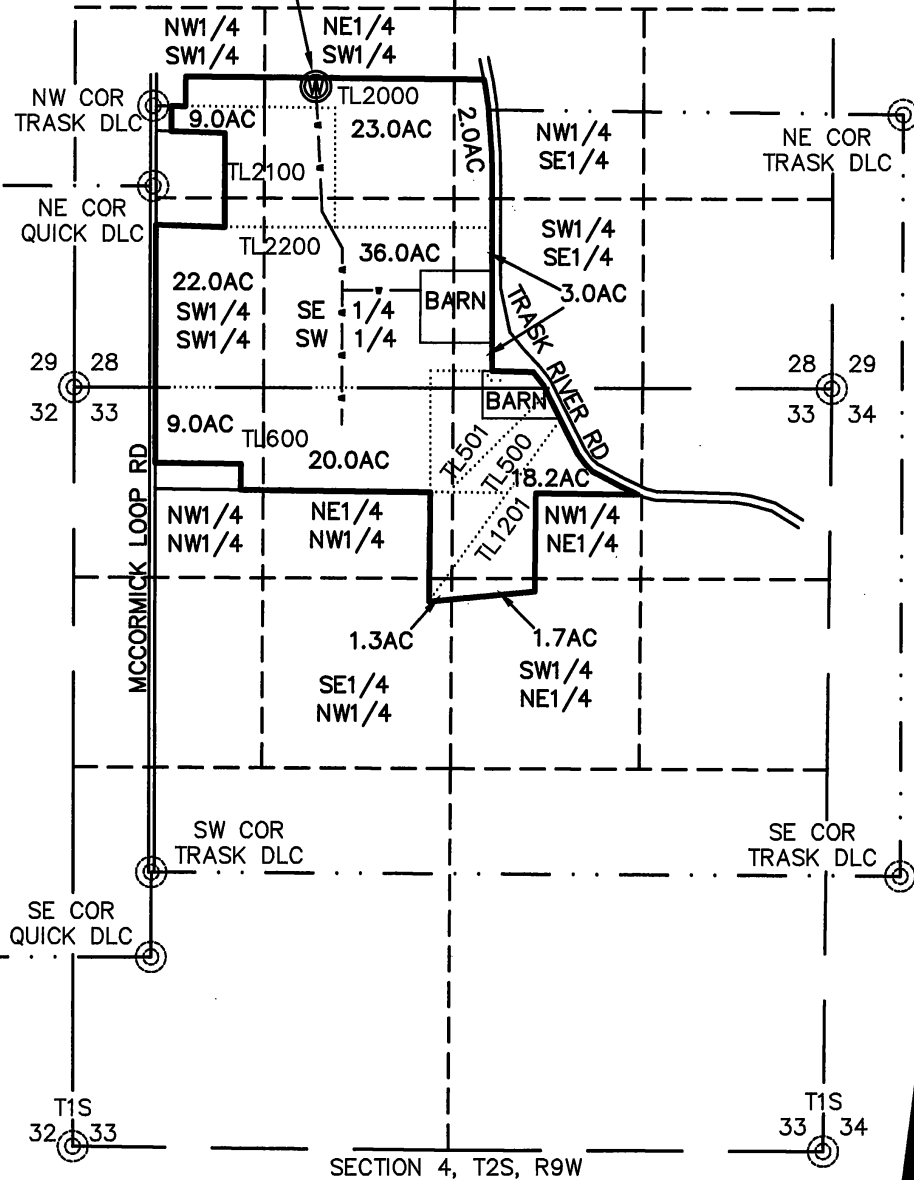
SITE\OBRISTWR.DWG
XXX.CR5

RECEIVED BY OWRD

OCT 03 2016

SALEM, OR

NORTH 734.11'
EAST 1114.92'
FROM THE NE
COR QUICK DLC



RENEWAL DATE JUNE 30, 2017

SURVEY BY:
BAYSIDE SURVEYING
11765 HWY 101 SOUTH
TILLAMOOK, OR. 97141
(503) 842-5551

WATER RIGHTS MAP FOR:
FAIRVIEW ACRES DAIRY FARMS
NW 1/4 & NE 1/4 SEC. 33 AND
SW 1/4 & SE 1/4 SEC. 28,
T1S, R9W, W.M.
TILLAMOOK COUNTY, OREGON

DATE	EQUIPMENT	FIELD	DRAWN	CHECKED	JOB NO.
SEPT. 20, 2016	TOPCON ES-103 SPECTRA NOMAD	TLJ/DWE	DWE	TLJ	