

T5N, R35E, WM
Sections 3, 4, 5, 8, 9, 10
T6N, R35E, WM
Sections 31 and 32
UMATILLA COUNTY

Points of Appropriation

POA 3A: 1156 ft N and 314 ft E from S/4 Corner of Section 3. Flowmeter in same location. Well Log UMAT 55526.

POA 4A: 415 ft S and 500 ft W from Center of Section 4. Flowmeter in same location. Well Log UMAT 55523.

POA 4D: 375 ft S and 940 ft W from Center of Section 4. Flowmeter in same location. Well Log UMAT 56382.

POA 50516: 930 ft S and 1355 ft E from NW Corner of Section 4. Flowmeter in same location. Well Log UMAT 50516.

Conveyance

Conveyance system is buried pressure pipeline ranging in size from 15 to 6 inches in diameter. All four wells discharge into common mainline, so water from any well can flow into any reservoir/bulge.

Reservoir (Bulge)

Water stored in five reservoirs on year-round basis to protect liners from wind and solar exposure.

All water stored in reservoirs/bulges is beneficially used for irrigation under Certificate 86441.

EAST BULGE (E)
Location: T5N, R35E, Sec 3, SW SE
Coords: 1320 ft N and 445 ft E from S 1/4 Cor Sec 3
Tax Lot: 1801
Surface Area: 1.74 acres
Volume: 22.59 acre-feet
Dam Height: 9.9 feet

FERGUSON BULGE (F)
Location: T5N, R35E, Sec 10, NE NW
Coords: 175 ft S and 680 ft W from N 1/4 Cor Sec 10
Tax Lot: 400
Surface Area: 0.72 acre
Volume: 6.64 acre-feet
Dam Height: 8.0 feet

MIDDLE BULGE (M)
Location: T5N, R35E, Sec 9, NE NE and NW NE
Coords: 145 ft S and 1320 ft W from NE Cor Sec 9
Tax Lot: 200
Surface Area: 1.49 acres
Volume: 8.42 acre-feet
Dam Height: 9.9 feet

WEST BULGE (W)
Location: T5N, R35E, Sec 5, NE SE and NW SE
Coords: 1105 ft S and 1215 ft W from E 1/4 Cor Sec 5
Tax Lot: 802
Surface Area: 1.20 acres
Volume: 13.20 acre-feet
Dam Height: 9.9 feet

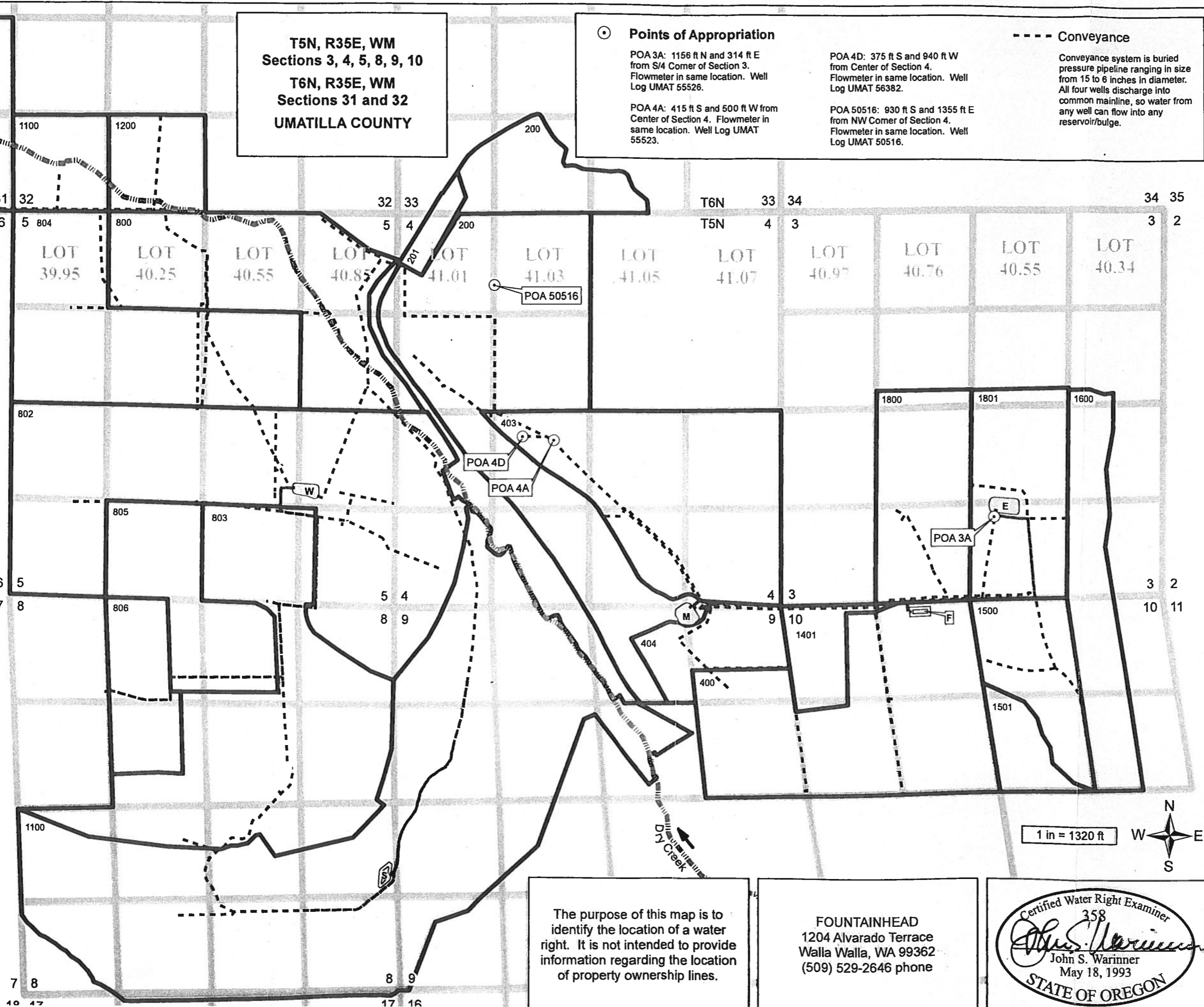
SOUTH BULGE (S)
Location: T5N, R35E, Sec 8, NE SE
Coords: 1005 ft S and 110 ft W from E 1/4 Cor Sec 8
Tax Lot: 1100
Surface Area: 1.20 acres
Volume: 13.20 acre-feet
Dam Height: 9.9 feet

RECEIVED

MAY 06 2011

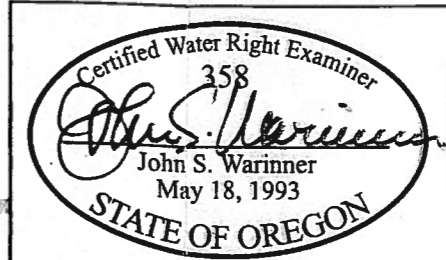
WATER RESOURCES DEPT
SALEM, OREGON

CORR MAP # 0584
Folder "U"



The purpose of this map is to identify the location of a water right. It is not intended to provide information regarding the location of property ownership lines.

FOUNTAINHEAD
1204 Alvarado Terrace
Walla Walla, WA 99362
(509) 529-2646 phone



CLAIM OF BENEFICIAL USE
Permit to Store Groundwater
App G-17395 Permit G-16843

in the name of
SEVEN HILLS PROPERTIES, LLC

Revised: 25 APR 2011