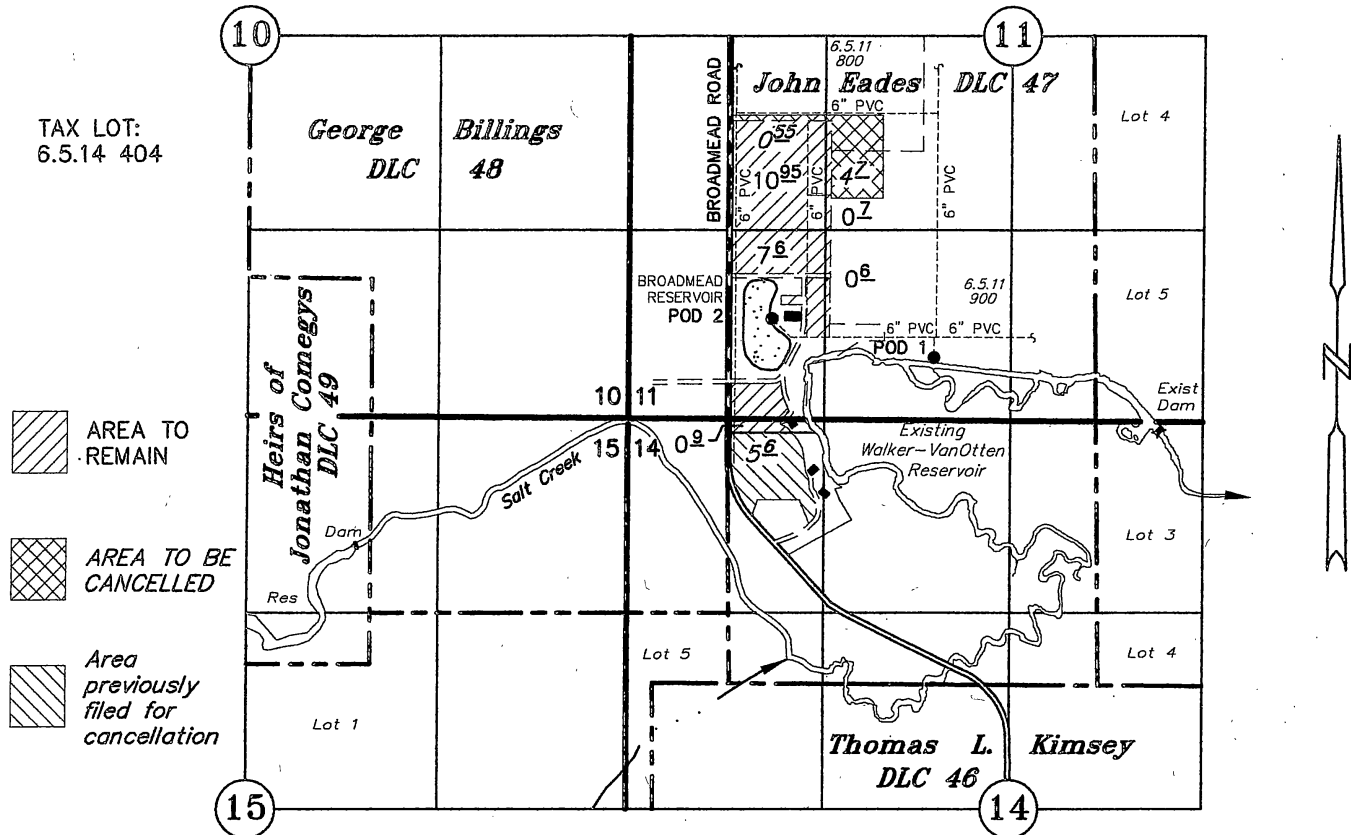


T6S, R5W, WM

POLK COUNTY



POD 1: 2228' North and 1405' East of the SW Corner John Eades DLC 47, with approved fish screen on end of foot valve and meter at pump.

POD 2: 2495' North and 283' East of the SW Corner John Eades DLC 47 with screened intake.

Meter: 2480' North and 303' East of the SW Corner John Eades DLC 47 (in pump house)

Voluntary Cancellation of a Portion of a Water Right Certificate

UNDER

RECEIVED

OCT 25 2019

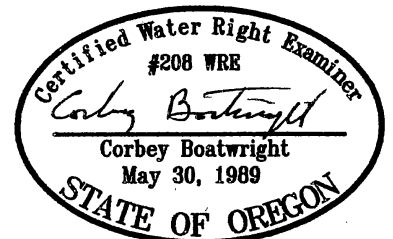
OWRD

Certificate No. 87956

BROADMEAD, LLC

OCTOBER 22, 2019

SCALE: 1" = 1320'



EXPIRES 12-31-13

NOTE: This map is for the purpose of identifying the location of water rights and has no intent to dimension or locate property ownership lines.