

# OCHOCO IRRIGATION DISTRICT

## T. 14S., R. 16E., W.M., Section 28

SCALE: 1" = 400'



3111

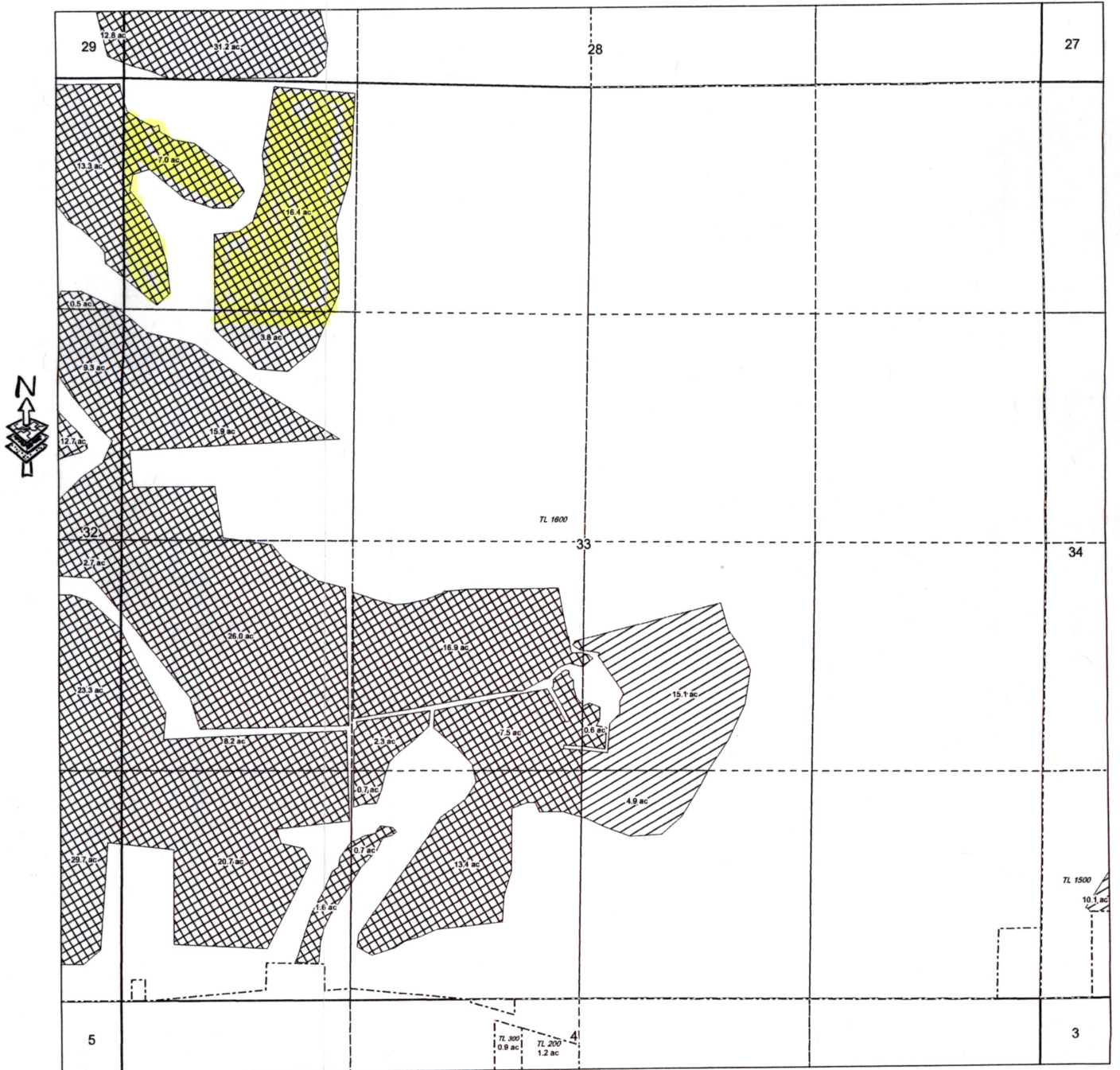


C. 82267 + 82268

# OCHOCO IRRIGATION DISTRICT

## T. 14S., R. 16E., W.M., Section 33

SCALE: 1" = 400'



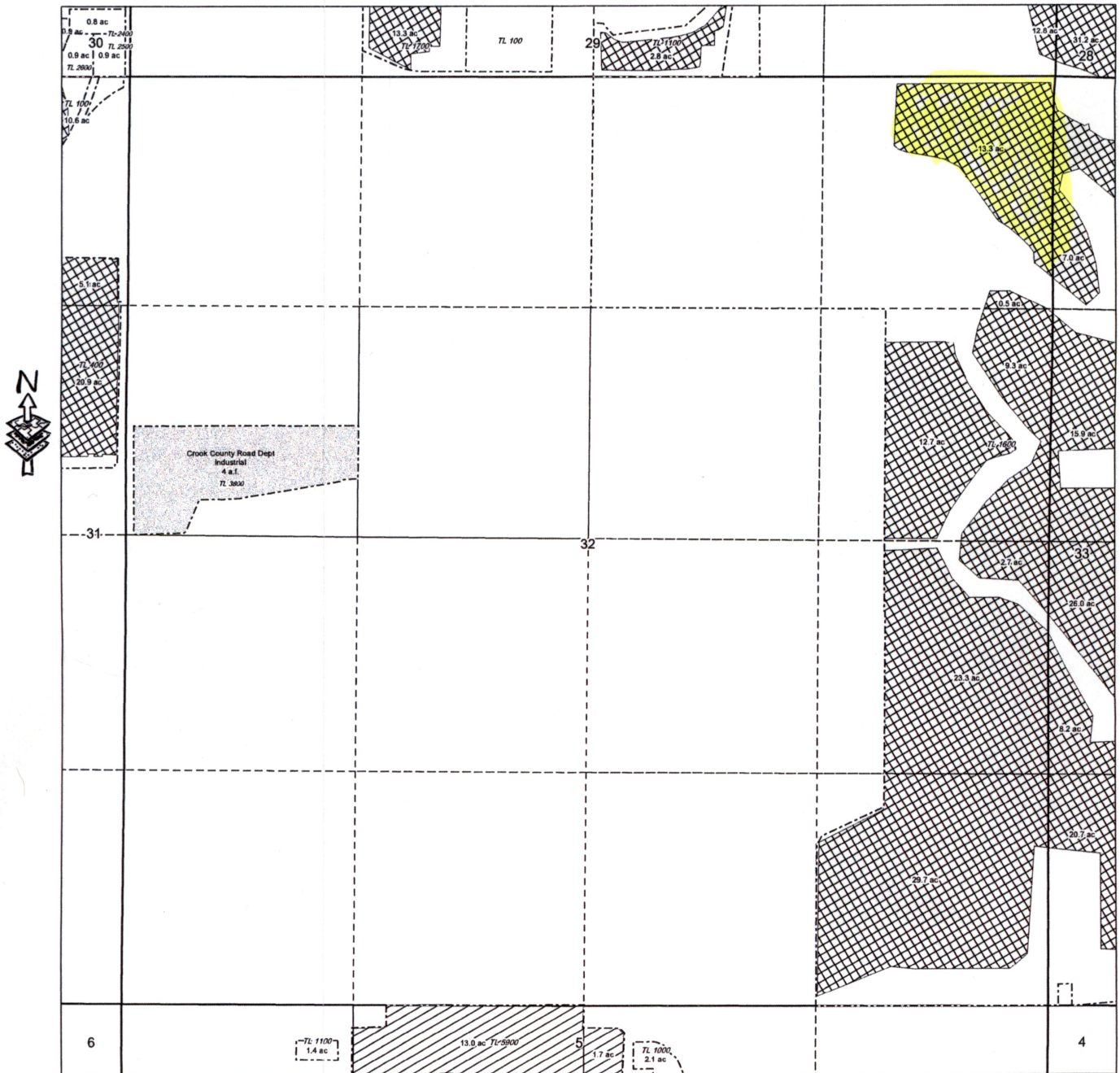
3111

Cert. 82267 & Cert 82268

# OCHOCO IRRIGATION DISTRICT

T. 14S., R. 16E., W.M., Section 32

SCALE: 1" = 400'



3111



82267 + 82268



# Crook County

T 14S R 16E Sec. 28 Tax Lot 1601

NW Of The SW

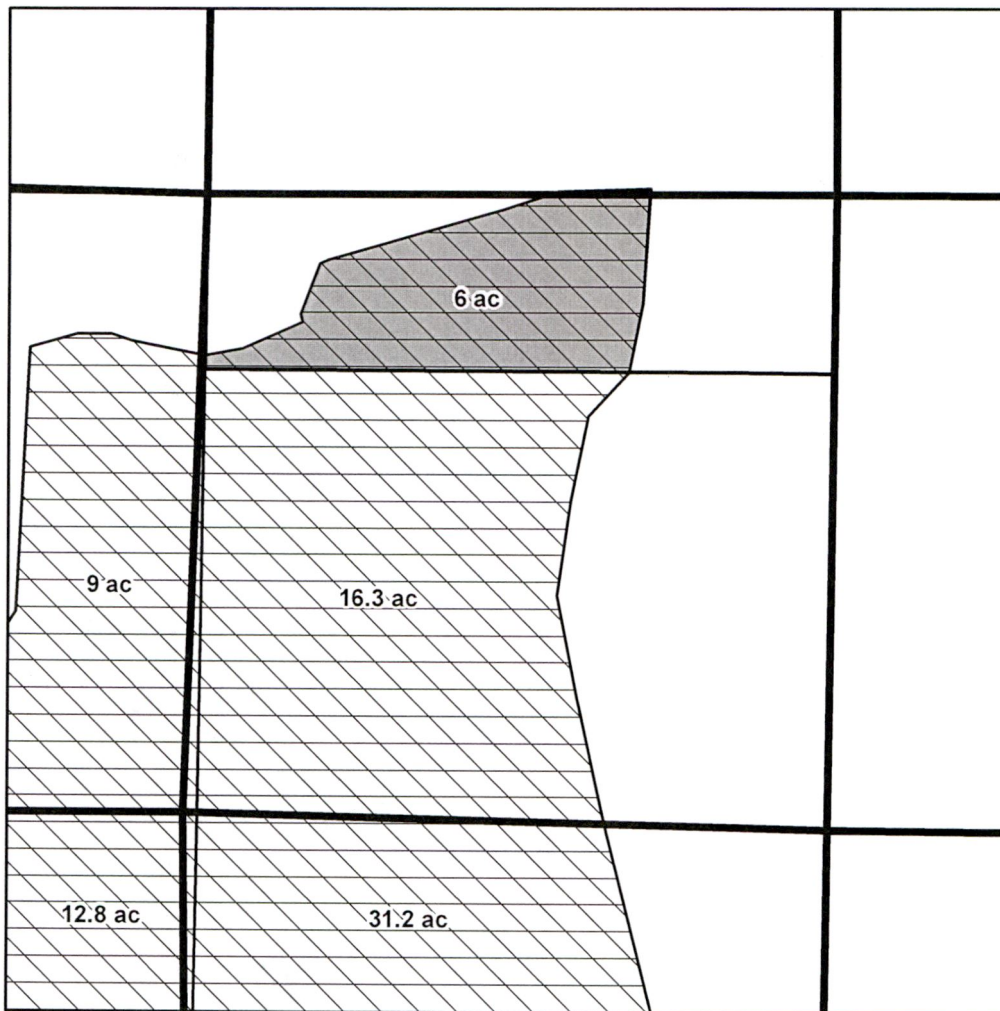
RECEIVED

DEC 28 2018

OWRD



## OFF Map



1 in = 400 ft

District Internal Notice #: 2

Certificate #: 82246 IR

- |                   |               |                          |
|-------------------|---------------|--------------------------|
| Transfer          | Cert 82246 IR | Cert 82246 IR / 82247 IS |
| Less than 5 acres | Cert 82247 IR | Cert 82249 IS            |
| Tax Lot           | QQ            |                          |



### Permanent Transfer

### DeBaca Land and Cattle Co

### Acres: 6.0 acres Off 82246 Primary

### 13091