

NORTH ↑

SECTION 6 T3S R2W W.M. HL 249

RECEIVED

DEC 31 1997

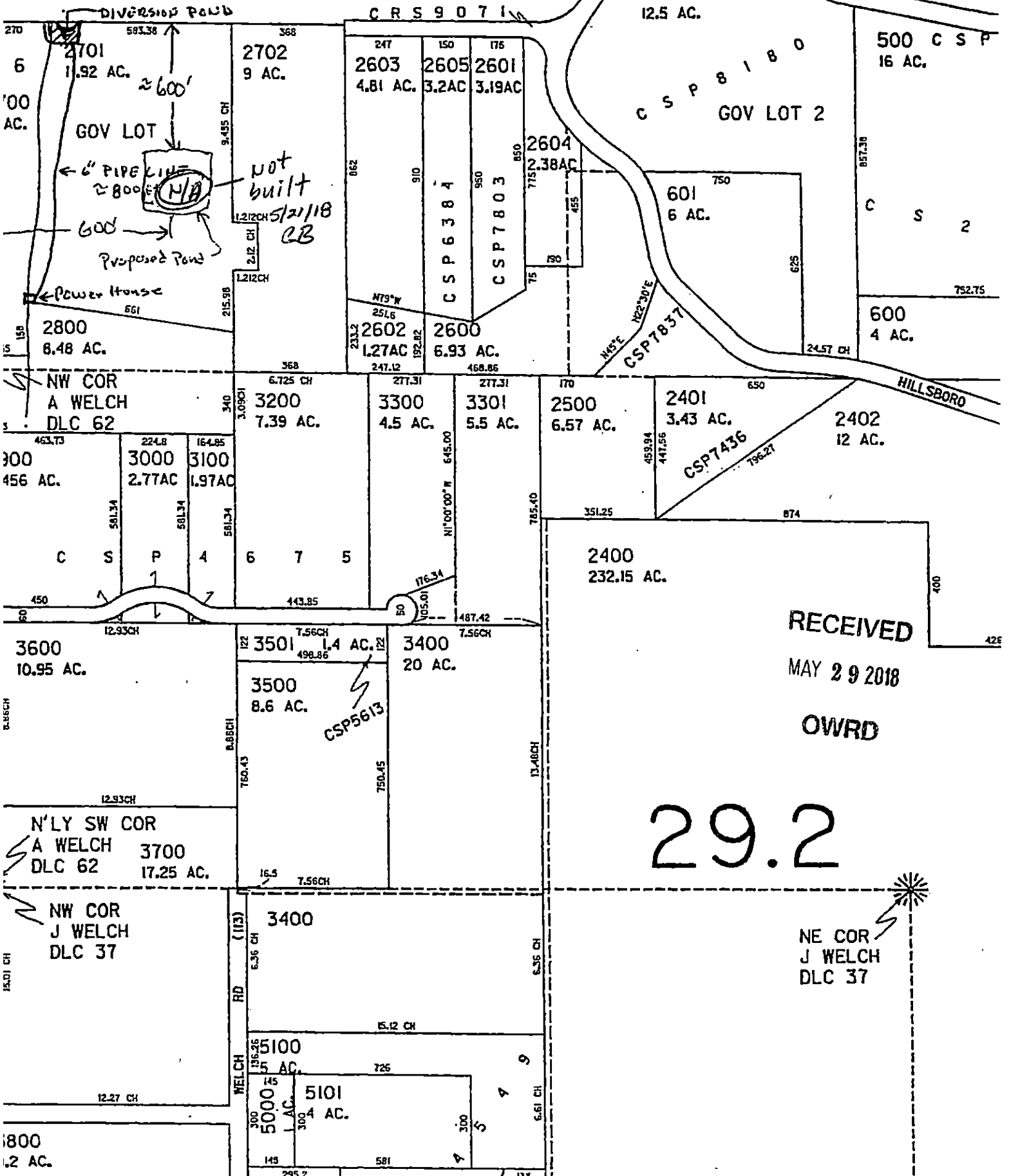
YAMHILL COUNTY

HILLSBORO WATER SOURCES DEPT. SEE MAP SALEM OREGON

31

1" = 400'

CRS 9071



RECEIVED

MAY 29 2018

OWRD

29.2

NE COR J WELCH DLC 37